



Model Number

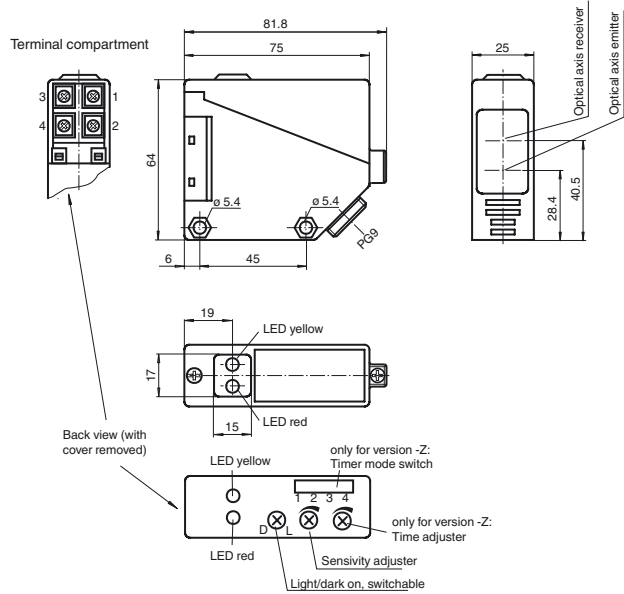
RLK39-55-Z/31/35/40a/116

Retroreflective sensor
with terminal compartment

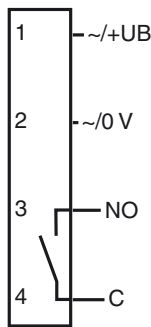
Features

- Visible red light
- Light/dark ON, switchable
- Timer function
- Degree of protection IP67

Dimensions



Electrical connection



Release date: 2018-07-31 14:35 Date of issue: 2018-07-31 088815_eng.xml

Refer to "General Notes Relating to Pepperl+Fuchs Product Information".

Pepperl+Fuchs Group
www.pepperl-fuchs.com

USA: +1 330 486 0001
fa-info@us.pepperl-fuchs.com

Germany: +49 621 776 4411
fa-info@de.pepperl-fuchs.com

Singapore: +65 6779 9091
fa-info@sg.pepperl-fuchs.com

Technical data**General specifications**

| | |
|---------------------------|--------------------------------|
| Effective detection range | 0 ... 17 m |
| Reflector distance | 0.1 ... 17 m |
| Threshold detection range | 20 m |
| Reference target | H50 reflector |
| Light source | LED red |
| Light type | modulated visible red light |
| Polarization filter | no |
| Ambient light limit | IEC / EN 60947-5-2 , 10000 Lux |

Functional safety related parameters

| | |
|--------------------------------|-------|
| MTTF _d | 803 a |
| Mission Time (T _M) | 20 a |
| Diagnostic Coverage (DC) | 0 % |

Indicators/operating means

| | |
|--------------------|--|
| Function indicator | LED yellow: switching state LED red: pre-fault indication |
| Control elements | Sensing range adjuster, light-on/dark-on changeover switch |
| Control elements | switch for timer function |

Electrical specifications

| | | |
|--------------------------------|----------------|--|
| Operating voltage | U _B | 12 ... 240 V DC 24 ... 240 V AC (50 ... 60 Hz) |
| Ripple | | 10 % |
| No-load supply current | I ₀ | ≤ 50 mA |
| Protection class | | II, rated voltage ≤ 250 V AC with pollution degree 1-2 according to IEC 60664-1 Caution! The protection class 2 is only valid when the terminal compartment is closed. output circuit has basic insulation to control circuit according to IEC/EN 61140 |
| Power consumption | P ₀ | ≤ 3 VA |
| Time delay before availability | t _v | ≤ 300 ms |

Output

| | | |
|---------------------|-------------------------------|--|
| Switching type | light/dark on | |
| Signal output | 1 relay output | |
| Switching voltage | max. 240 V AC ; 150 V DC | |
| Switching current | max. 3 A | |
| Switching power | DC: max. 90 W AC: max. 750 VA | |
| Switching frequency | f | ≤ 25 Hz |
| Response time | | ≤ 20 ms |
| Timer function | | On-/off-delay or pulse extension on choice |

Ambient conditions

| | |
|---------------------|--------------------------------|
| Ambient temperature | -25 ... 55 °C (-13 ... 131 °F) |
| Storage temperature | -40 ... 70 °C (-40 ... 158 °F) |

Mechanical specifications

| | |
|----------------------|---|
| Housing width | 25 mm |
| Housing height | 64 mm |
| Housing depth | 75 mm |
| Degree of protection | IP67 |
| Connection | terminal compartment PG9, ≤ 2.5 mm ² |
| Material | |
| Housing | PBT |
| Optical face | PMMA |
| Mass | approx. 110 g |

General information

| | |
|-------------------|--------------------------|
| Scope of delivery | Mounting aid , Reflector |
|-------------------|--------------------------|

Compliance with standards and directives

| | |
|---------------------------|--|
| Directive conformity | EMC Directive 2004/108/EC |
| EMC Directive 2004/108/EC | EN 60947-5-2:2007+A1:2012 IEC 60947-5-2:2007+A1:2012 |
| Standard conformity | |
| Product standard | EN 60947-5-2:2007 IEC 60947-5-2:2007 |

Approvals and certificates

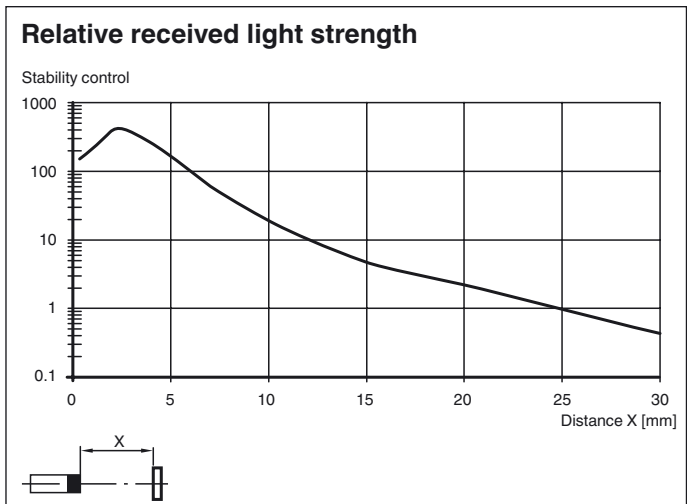
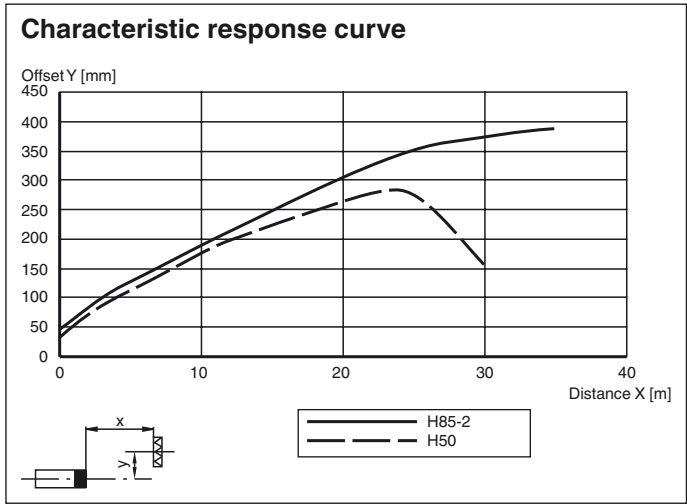
| | |
|----------------|---|
| EAC conformity | TR CU 020/2011 TR CU 004/2011 |
| CCC approval | Certified by China Compulsory Certification (CCC) |
| Approvals | CE |

Accessories**OMH-RL39**

Mounting bracket for RL39 series
Sensors

Other suitable accessories can be found at
www.pepperl-fuchs.com

Curves/Diagrams



| Timer Mode | Light beam | Light pass | Light block |
|---------------|------------|------------|-------------|
| One shot | ○ | [Pulse] | [Pulse] |
| | ● | [Pulse] | [Pulse] |
| Off-delay | ○ | [Pulse] | [Pulse] |
| | ● | [Pulse] | [Pulse] |
| On-delay | ○ | [Pulse] | [Pulse] |
| | ● | [Pulse] | [Pulse] |
| Normal | ○ | [Pulse] | [Pulse] |
| | ● | [Pulse] | [Pulse] |

○ Denotes Light - ON T= 0.1 10 sec.
● Denotes Dark - ON

Release date: 2018-07-31 14:35 Date of issue: 2018-07-31 088815_eng.xml