



Model Number

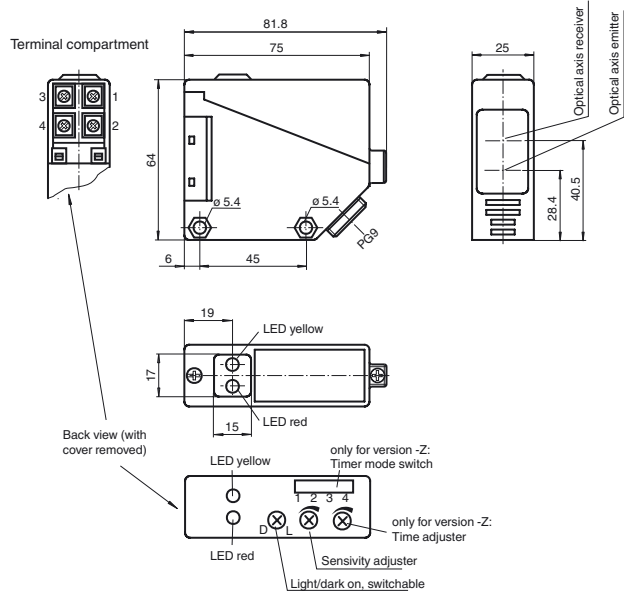
RLK39-54-Z/31/40a/116

Retroreflective sensor
with terminal compartment

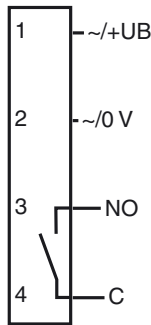
Features

- Glare protected with polarization filter
- Visible red light
- Light/dark ON, switchable
- Timer function
- Degree of protection IP67

Dimensions



Electrical connection



Release date: 2018-07-31 14:35 Date of issue: 2018-07-31 088823_eng.xml

Technical data**General specifications**

Effective detection range	0 ... 5 m
Reflector distance	0.1 ... 5 m
Threshold detection range	6 m
Reference target	H50 reflector
Light source	LED red
Light type	modulated visible red light
Polarization filter	yes
Ambient light limit	IEC / EN 60947-5-2 , 10000 Lux

Functional safety related parameters

MTTF _d	803 a
Mission Time (T _M)	20 a
Diagnostic Coverage (DC)	0 %

Indicators/operating means

Function indicator	LED yellow: switching state LED red: pre-fault indication
Control elements	Sensing range adjuster, light-on/dark-on changeover switch
Control elements	switch for timer function

Electrical specifications

Operating voltage	U _B	12 ... 240 V DC 24 ... 240 V AC (50 ... 60 Hz)
Ripple		10 %
No-load supply current	I ₀	≤ 50 mA
Protection class		II, rated voltage ≤ 250 V AC with pollution degree 1-2 according to IEC 60664-1 Caution! The protection class 2 is only valid when the terminal compartment is closed. output circuit has basic insulation to control circuit according to IEC/EN 61140
Power consumption	P ₀	≤ 3 VA
Time delay before availability	t _v	≤ 300 ms

Output

Switching type	light/dark on	
Signal output	1 relay output	
Switching voltage	max. 240 V AC ; 150 V DC	
Switching current	max. 3 A	
Switching power	DC: max. 90 W AC: max. 750 VA	
Switching frequency	f	≤ 25 Hz
Response time		≤ 20 ms
Timer function		On-/off-delay or pulse extension on choice

Ambient conditions

Ambient temperature	-25 ... 55 °C (-13 ... 131 °F)
Storage temperature	-40 ... 70 °C (-40 ... 158 °F)

Mechanical specifications

Housing width	25 mm
Housing height	64 mm
Housing depth	75 mm
Degree of protection	IP67
Connection	terminal compartment PG9, ≤ 2.5 mm ²
Material	
Housing	PBT
Optical face	PMMA
Mass	approx. 110 g

General information

Scope of delivery	Mounting aid , Reflector
-------------------	--------------------------

Compliance with standards and directives

Directive conformity	EMC Directive 2004/108/EC
EMC Directive 2004/108/EC	EN 60947-5-2:2007+A1:2012 IEC 60947-5-2:2007+A1:2012
Standard conformity	
Product standard	EN 60947-5-2:2007 IEC 60947-5-2:2007

Approvals and certificates

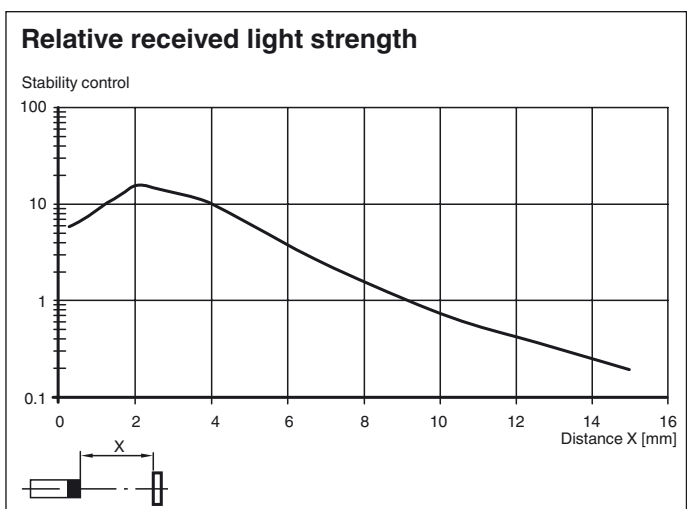
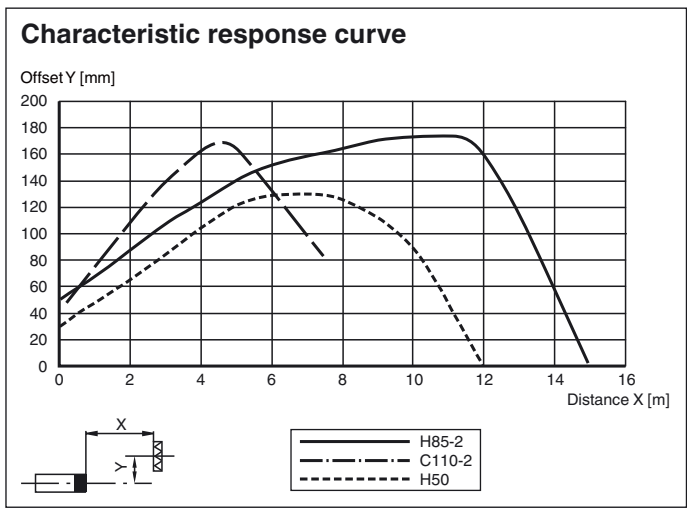
EAC conformity	TR CU 020/2011 TR CU 004/2011
CCC approval	Certified by China Compulsory Certification (CCC)
Approvals	CE

Accessories**OMH-RL39**

Mounting bracket for RL39 series
Sensors

Other suitable accessories can be found at
www.pepperl-fuchs.com

Curves/Diagrams



Timer Mode	Light beam	Light pass	Light block
One shot 	○	[Pulse]	[Pulse]
	●	[Pulse]	[Pulse]
Off-delay 	○	[Pulse]	[Pulse]
	●	[Pulse]	[Pulse]
On-delay 	○	[Pulse]	[Pulse]
	●	[Pulse]	[Pulse]
Normal 	○	[Pulse]	[Pulse]
	●	[Pulse]	[Pulse]

○ Denotes Light - ON T= 0.1 10 sec.
 ● Denotes Dark - ON

Release date: 2018-07-31 14:35 Date of issue: 2018-07-31 088823_eng.xml

Refer to "General Notes Relating to Pepperl+Fuchs Product Information".

Pepperl+Fuchs Group
www.pepperl-fuchs.com

USA: +1 330 486 0001
fa-info@us.pepperl-fuchs.com

Germany: +49 621 776 4411
fa-info@de.pepperl-fuchs.com

Singapore: +65 6779 9091
fa-info@sg.pepperl-fuchs.com