



Model Number

PG HOLDER SLC

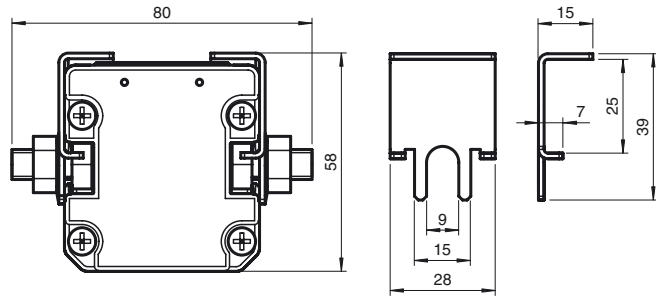
Holders for SLC protective glass panes

Features

- Bracket for mounting the glass panel for the protection of the light outlet surface of safety light grids and curtains

Packaging unit 4-piece

Dimensions



Technical data

Ambient conditions

Storage temperature -40 ... 85 °C (-40 ... 185 °F)

Mechanical specifications

Material nickel-plated steel
 Mounting Mounting accessories included

Release date: 2018-06-05 13:46 Date of issue: 2018-06-05 111172_eng.xml