



### Model number

**VAA-2E-IM1-J-S-V1**

AS-Interface safety switch

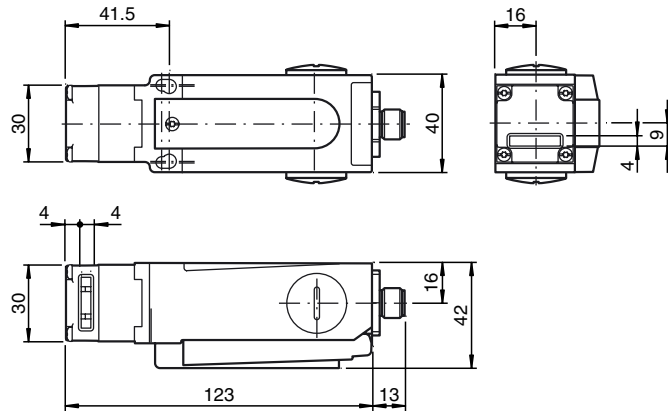
### Features

- Applications up to  $PL_d$
- Rotating metal head
- 40 mm narrow construction, fixture dimensions compatible with all safety switches
- M12 plug connection

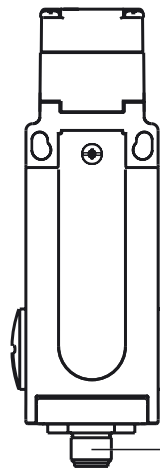
### Function

The VAA-2E-LIM1-S-V1 safety switch with a separate actuator is a mechanical safety switch with 2 inputs. NC contacts 1 and 2 are monitored via the inputs. Evaluation takes place via a safety monitor. Connection is via an M12 plug. The safety switch is supplied via the AS-Interface. Depending on the application, 4 different models of mechanical actuators can be ordered separately.

### Dimensions

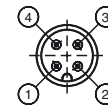


### Indicating / Operating means



Plug M12

View of safety switch plug connector



- 1 AS-Interface +
- 2 not used
- 3 AS-Interface -
- 4 not used

### Technical data

#### General specifications

Slave type	Safety-Slave
AS-Interface specification	V2.1
Required master specification	$\geq V2.0$
UL File Number	E179102

#### Electrical specifications

Rated operating voltage	$U_e$	26.5 ... 31.6 V from AS-Interface
Rated operating current	$I_e$	$\leq 45$ mA
Rated insulation voltage		50 V

#### Input

Number/Type	2 safety-related inputs: normally-closed contact 1 normally-closed contact 2
Supply	from AS-Interface

#### Directive conformity

Electromagnetic compatibility	
Directive 2014/30/EU	EN 62026-2:2013 EN 61496-1:2004

#### Standard conformity

Degree of protection	EN 60529:2000
AS-Interface	EN 62026-2:2013
Functional safety	DIN EN 954-1, EN ISO 13849-1 (up to $PL_d$ )

#### Programming instructions

Profile	S-7.B
IO code	7
ID code	B
ID1 code	F
ID2 code	E

<b>Data bits (function via AS-Interface)</b>	<b>Input</b>
D0	normally-closed contact 1

D1	normally-closed contact 1	
D2	normally-closed contact 2	
D3	normally-closed contact 2	
Ambient conditions		
Ambient temperature	-20 ... 55 °C (-4 ... 131 °F)	
Mechanical specifications		
approach speed	≤ 20 m/min	
Operating force	25 N	
Extraction force	25 N	
retention force	10 N	
insertion depth	detected min. distance	permissible caster
approach direction lateral	24.5 mm	5 mm
approach direction from above	24.5 mm	5 mm
Degree of protection	IP67	
Connection	M12 x 1 connector	
Material		
Housing	Fiberglass-reinforced thermoplastic	
actuating head	metal	
cam	stainless steel	
Mass	approx. 0.16 kg	
Life span	2 x 10 <sup>6</sup> switching cycles	

## Accessories

### VAZ-IM1-90°-BOLT-S

Right-angled actuator for AS-Interface safety switches

### VAZ-IM1-BOLT-S

Straight actuator for AS-Interface safety switches

### VAZ-IM1-LR-RADIUS-BOLT-S

Hinged actuator for right/left mounted doors, for AS-Interface safety switches

### VAZ-IM1-TD-RADIUS-BOLT-S

Hinged actuator for top/bottom mounted doors, for AS-Interface safety switches

### VAZ-IM1-BASE-BOLT-S

Latches for mechanical safety switches (LIM1 and IM1)

### VAZ-IM1-BASE-S

Switch mount for mechanical safety switches (LIM1 and IM1)

### VAZ-T1-FK-1M-PUR-V1-G

Splitter box AS-Interface to 1x M12 round connector