



Model Number

GLP80-RT/40b/103/156

Photoelectric slot sensor
with 3-pin, M8 x 1 connector

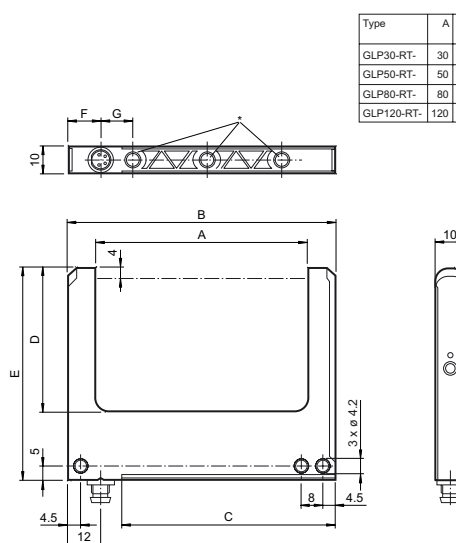
Features

- Plastic version
- Clearly visible function indicators
- Degree of protection IP67

Product information

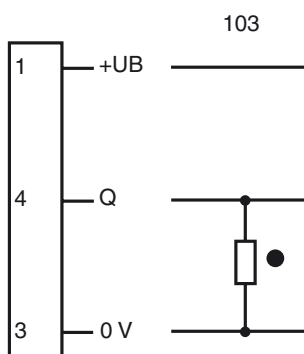
An extremely favorable price/performance ratio and an innovative display concept characterize the GLP series. The switching states are visible from all directions. The optional attachment holes or dove tail joint significantly increase installation flexibility. The external, dynamic Teach-In function allows you to teach in moving objects easily.

Dimensions



Type	A	B	C	D	E	F	G	Number of mounting holes M4 *
GLP30-RT-	30	50	30	34	59.5	20	-	1
GLP50-RT-	50	70	50	54	79.5	20	28	2
GLP80-RT-	80	100	80	54	79.5	20	2 x 28	3
GLP120-RT-	120	140	120	54	79.5	20	3 x 28	4

Electrical connection

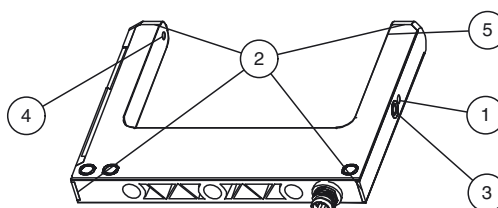


- = Light on
- = Dark on

Pinout



Indicators/operating means



1	Operating display	green
2	Signal display	yellow
3	TEACH-IN button	
4	Emitter	
5	Receiver	



Technical data		
General specifications		
Light source	LED , 640 nm pulsing	
Light type	modulated visible red light	
Object size	min. 0.5 mm	
Slot width	80 mm	
Ambient light limit	10000 Lux	
Indicators/operating means		
Function indicator	LED yellow , lit when the light beam is interrupted LED green: ready	
Control elements	Teach-In key , Sensitivity adjustment and Mode adjustment (NO/NC)	
Electrical specifications		
Operating voltage	U _B	10 ... 30 V DC
Ripple	10 %	
No-load supply current	I ₀	≤ 30 mA
Output		
Switching type	light/dark on	
Signal output	1 PNP, short-circuit protected, reverse polarity protected, open collector	
Switching voltage	max. 30 V DC	
Switching current	max. 100 mA	
Voltage drop	U _d	≤ 2.4 V
Switching frequency	f	2000 Hz
Response time	0.25 ms	
Ambient conditions		
Ambient temperature	-20 ... 60 °C (-4 ... 140 °F)	
Storage temperature	-20 ... 80 °C (-4 ... 176 °F)	
Mechanical specifications		
Degree of protection	IP67	
Connection	M8 connector, 3-pin	
Material		
Housing	PC	
Optical face	plastic	
Mass	35 g	
Compliance with standards and directives		
Standard conformity		
Product standard	EN 60947-5-2:2007 IEC 60947-5-2:2007	
Approvals and certificates		
Protection class	II	
UL approval	cULus Listed, Class 2 Power Source "For use in NFPA 79 Applications only" Adapters providing field wiring means are available from the manufacturer. Refer to manufacturers information.	

Accessories
OMH-K03 dove tail mounting clamp
V3-GM-2M-PUR Cable socket, M8, 3-pin, PUR cable
V3-WM-2M-PUR Cable socket, M8, 3-pin, PUR cable
V3-GM-BK2M-PUR-U Cable socket, M8, 3-pin, PUR cable
V3-WM-BK2M-PUR-U Cable socket, M8, 3-pin, PUR cable
Other suitable accessories can be found at www.pepperl-fuchs.com