



Model Number

UGB-18GM50-255-2E3-Y249022

Features

- Ultrasonic system for splice detection
- Short version
- Insensitive to printing, colors, and shining surfaces
- Very high processing speeds are possible.
- Especially suitable for splices with highly inhomogeneous materials, e.g., packaging paper.

Diagrams

Mounting/Adjustment

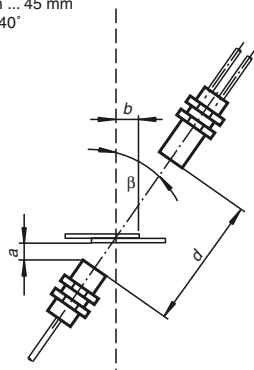
Suggestions:

a = 5 mm ... 15 mm

b ≥ 10 mm

d = 40 mm ... 45 mm

β = 20° ... 40°



Technical data

General specifications

| | |
|----------------------|--|
| Sensing range | 20 ... 60 mm , optimal distance: 45 mm |
| Transducer frequency | 255 kHz |

Indicators/operating means

| | |
|------------|-------------------------------------|
| LED green | Display: readiness |
| LED yellow | Display: splice detected |
| LED red | Indication: No sheet detected (Air) |

Electrical specifications

| | |
|--------------------------------------|--|
| Operating voltage U_B | 18 ... 30 V DC , ripple 10 % _{SS} |
| No-load supply current I_0 | < 60 mA |
| Time delay before availability t_v | < 500 ms |

Input

| | |
|--------------|--|
| Input type | Teach-In input 0-level: $-U_B ... -U_B + 1V$ 1-level: $+U_B - 1V ... +U_B$ |
| Pulse length | ≥ 500 ms |
| Impedance | ≥ 10 kΩ |

Output

| | |
|-------------------------------|---|
| Output type | 2 switch outputs PNP, NC |
| Rated operating current I_e | 2 x 100 mA , short-circuit/overload protected |
| Voltage drop U_d | ≤ 3 V |
| Switch-on delay t_{on} | ≤ 600 μs |
| Switch-off delay t_{off} | ≤ 600 μs |
| Pulse extension | ≥ 120 ms programmable |

Ambient conditions

| | |
|---------------------|--------------------------------|
| Ambient temperature | 0 ... 60 °C (32 ... 140 °F) |
| Storage temperature | -40 ... 70 °C (-40 ... 158 °F) |

Mechanical specifications

| | |
|----------------------|--|
| Connection type | cable PVC , 2 m |
| Core cross-section | 0.14 mm ² |
| Degree of protection | IP67 |
| Material | |
| Housing | nickel plated brass; plastic components: PBT |
| Transducer | epoxy resin/hollow glass sphere mixture; polyurethane foam |
| Mass | 150 g |

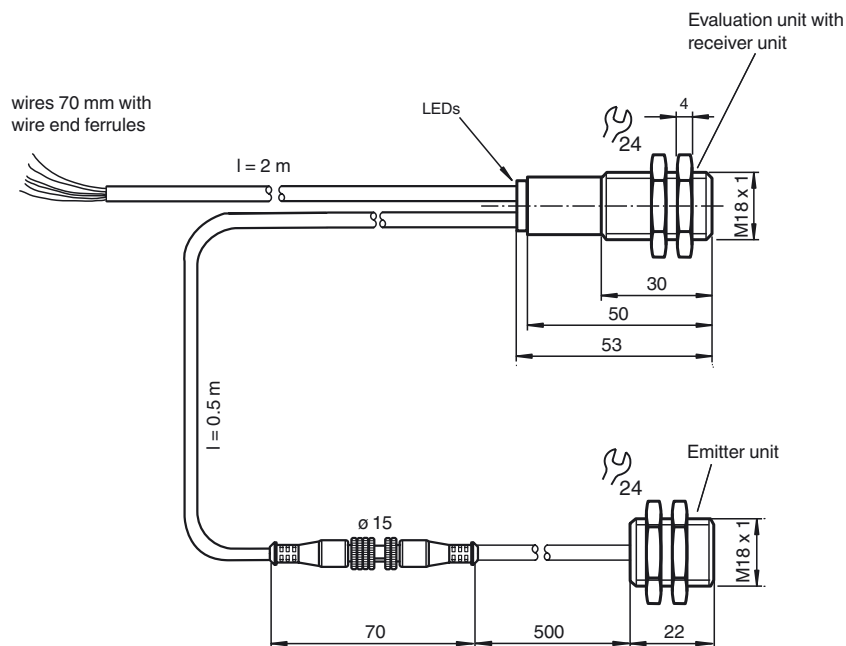
Compliance with standards and directives

| | |
|---------------------|---|
| Standard conformity | |
| Standards | EN 60947-5-2:2007+A1:2012 IEC 60947-5-2:2007 + A1:2012 |

Approvals and certificates

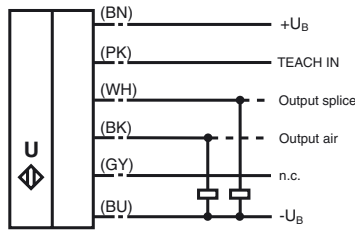
| | |
|--------------|--|
| UL approval | cULus Listed, General Purpose |
| CSA approval | cCSAus Listed, General Purpose |
| CCC approval | CCC approval / marking not required for products rated ≤36 V |

Dimensions



Electrical Connection

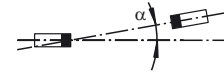
Standard symbol/Connection:
Splice control



Additional Information

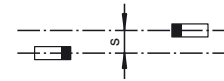
Angular misalignment

$\alpha < +/- 1^\circ$



Sensor offset

$s < +/- 1 \text{ mm}$



Accessories

MH-UDB01

Mounting bracket for double sheet monitor

Operation in applications with increased ESD requirements

Using the included metal screw caps, the sensor can be used in applications with increased ESD requirements up to 30 kV (ESD = electrostatic discharge). The metal coupling nuts are screwed on the front of the transmitter and receiver. The installation of the transmitter and receiver must ensure a large area electrical connection to the machine earth.

Description of sensor functions

The ultrasonic double sheet monitor for splice detection can be used in all applications, where an automatic detection of glue dots, splices, bondings or the absence of base material is required, to protect machines or to evade waste production. The double-sheet monitor is based on the ultrasonic through-beam principle. The following can be detected:

- No base material, i.e. air,
- glue dots, splices, bondings

A microprocessor system evaluates the signals. The appropriate switch outputs are set as a result of the evaluation. Changes in ambient conditions such as temperature and humidity are compensated for automatically. The interface electronics is integrated into a compact M18 metal housing together with a sensor head.

Electrical connection

The sensor is equipped with 6 connecting wires. The functionality of the connections is described in the following table. The teach input (PK) is used to teach the sensor.

| Colour | Switching on | Comments |
|--------|---------------------------|---|
| BN | +UB | |
| WH | Switch output for splices | Pulse width corresponds to the event |
| BK | Switch output for air | Pulse width corresponds to the event |
| GY | not connected | |
| PK | -UB / n.c. / +UB | Normal operation / output pulse prolongation / TEACH-IN |
| BU | -UB | |

Normal mode

The sensor is working in normal mode if the function input (PK) is applied to -UB or not connected.

Displays:

- LED yellow: Detection of splices
- LED green: Power on
- LED red: Detection of air (no base material)

Switch outputs:

The switch outputs are only active in normal operation!

- White: WH Splice output
- Black: BK Air output

Release date: 2017-09-25 08:47 Date of issue: 2017-09-25 249022_eng.xml

Output pulse extension

If the teach input (PK) is not connected, when switching on the power supply, the sensor operates with output pulse prolongation. Events, shorter than 120 ms cause an output pulse duration of 120 ms at the Splice output. For sensor operation without pulse prolongation, the teach input (PK) has to be connected with $-U_B$ while power supply is switched on.

Please note:

This can result in a condition in which more than one switch output is switched through!

TEACH-IN mode

Connecting the teach input (PK) with $+U_B$ for at least 500 ms causes the sensor to change into TEACH-IN mode. The TEACH-IN procedure has to be carried out with base material. In case of inhomogeneous base materials we suggest to teach the sensor with activated material feeding and a corresponding prolongation of the TEACH-IN procedure.

During the TEACH-IN procedure flashes the yellow LED; the green LED is off.

After returning to the normal operation mode (teach input (PK) detached from $+U_B$) the sensor indicates whether the TEACH-IN procedure was successful or not.

TEACH-IN procedure successful: green LED flashes 3 times

TEACH-IN procedure not successful: red LED flashes 3 times

Notes:

A complete device consists of an ultrasonic emitter and an evaluation unit with an ultrasonic emitter. The sensor heads are optimally adjusted to each other when they leave the factory. Therefore, they must not be used separately or exchanged with other devices of the same type. The plug connector on the emitter/receiver connection cable is only intended to be used for easier mounting, not to replace units.

If two or more double sheet controls are used in the immediate vicinity of each other, there may be mutual interference between them, which can result in improper functionality of the devices. Mutual interference can be prevented by introducing suitable countermeasures when planning systems. Suitable measures can be:

- Mounting of sound absorbers (foam material)
- mounting of sound separators (sheet metal)
- installation of the sensors with different directions of sound transmission.