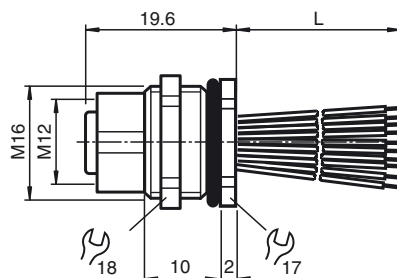




Dimensions



Model Number

V1-M16H-500
Receptacles, M12/M16, 4-pin

Features

- Rear/screw mounting

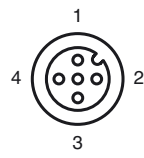
Accessories

LOCKNUT M16 NICKEL BRASS
Nut, nickel-plated brass

Technical data

General specifications		
Number of pins		4
Connection 1		socket
Construction type 1		straight
Threading 1		M12
Connection 2		cable end
Electrical specifications		
Operating voltage	U _B	max. 250 V
Test voltage		> 2000 V _{eff} AC
Operating current		max. 4 A
Volume resistance		< 3 mΩ
Insulation resistance		≥ 100 MΩ
Ambient conditions		
Ambient temperature		-25 ... 85 °C (-13 ... 185 °F) active -40 ... 85 °C (-40 ... 185 °F) fixed
Pollution Degree		3
Mechanical specifications		
Degree of protection		IP67
Connection		Tinned copper single leads, Ø1.2 ±0.07 mm
Material		
Contacts		CuZn
Contact surface		Au
Threaded bushings		Zinc die-casting, nickel-plated
Seal		FKM
Core insulation		TPE
Cable		
Cores		4 x 0.34 mm ²
Conductor construction		7 x 0.25 mm Ø AWG 22
Length	L	500 mm
Installation		Rear mounting M16

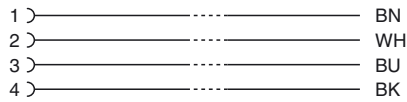
Electrical connection



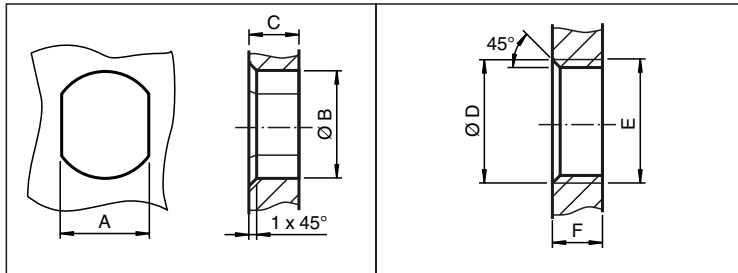
Release date: 2014-10-06 11:01 Date of issue: 2014-10-06 257467_eng.xml

Refer to "General Notes Relating to Pepperl+Fuchs Product Information".

Electrical connection



Installation Note



	A	B	C	D	E	F
M8	7.1 ^{+0.1}	Ø 8.2 ^{+0.1}	2 - 4 mm	-	M8x0.5	2 - 4 mm
M12	11 ^{+0.1}	Ø 12.2 ^{+0.1}	< 4 mm	-	M12x1	< 4.5 mm
M16	13.5 ^{+0.1}	Ø 16.1	< 4.5 mm	Ø 17 ^{+0.2}	M16x1.5	> 2.5 mm
M20	13.5 ^{+0.1}	Ø 20.1	-	Ø 20 ^{+0.2}	M20x1.5	< 6 mm
PG9	13.5 ^{+0.1}	Ø 15.3 ^{+0.1}	< 4.5 mm	Ø 16	PG9	> 2.5 mm
PG13.5	18.8 ^{+0.1}	Ø 20.5 ^{+0.1}	-	Ø 22 ^{±0.1}	PG13.5	-

Release date: 2014-10-06 11:01 Date of issue: 2014-10-06 257467_eng.xml