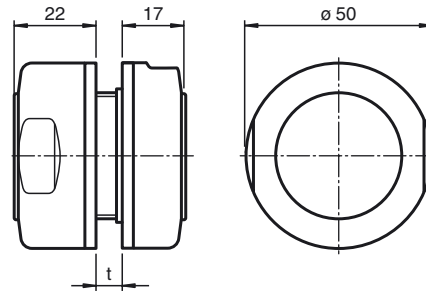


Dimensions



Model Number

MH-30H-01-3G-3D

Mounting aid, 30 mm acc. to EHEDG

Features

- ATEX-approval for zone 2 and zone 22
- Retainer for 30 mm cylindrical sensors with smooth housing
- Installation in 3 ... 12 mm thick sheet metal
- Simple installation and exact setting

Accessories

UMC3000-30H-I-5M-3G-3D

Single head system

UMC3000-30H-E5-5M-3G-3D

Single head system

Technical data

Ambient conditions

Ambient temperature -25 ... 85 °C (-13 ... 185 °F)

Mechanical specifications

Material Stainless steel 1.4404 / AISI 316L , NBR
 Cut out dimensions Hole diameter 42.5 mm
 t = 3 ... 12 mm



Attention!

Coupling nuts (4a and 4b) may be tightened only by hand!

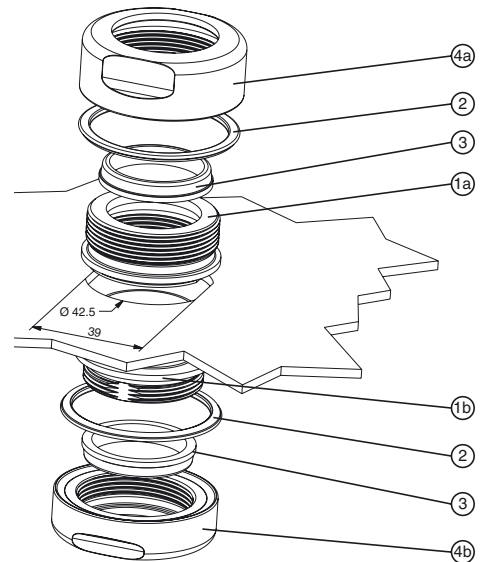
Description

This mounting aid is suitable for secure mounting of sensors with 30 mm smooth housing. Because of the discharge capability of all the individual parts of the mounting aid with regard to electrostatic charging, the aid can be used in hazardous areas.

Mounting

Mount the sensor as follows:

1. Make a thru-hole in the mounting plate with the required dimensions (see figure).
2. Insert the threaded sleeve (1a) into the thru-hole, leading with the collar that is flattened on both sides.
3. From the other side of the mounting plate, screw the threaded nipple (1b) into the inner thread of the threaded sleeve (1a) and tighten with an open-jaw wrench, 36 width across flats.
4. On each side, place an O-ring (2) on the recess of the resulting fitting.
5. Insert a molded seal (3) into each of coupling nuts (4a) and (4b).
Ensure that the seal is centered.
6. Loosely screw the coupling nuts (4a) and (4b) onto the fitting from both sides.
Ensure that the molded seals (3) placed in the coupling nuts securely surround the sensor.
7. Slide the sensor with 30 mm smooth housing into the fitting and position it according to your sensor application.
8. Secure the sensor in position by hand-tightening coupling nuts (4a) and (4b).



Release date: 2016-04-05 12:28 Date of issue: 2016-04-05 290797_eng.xml