

**Features**

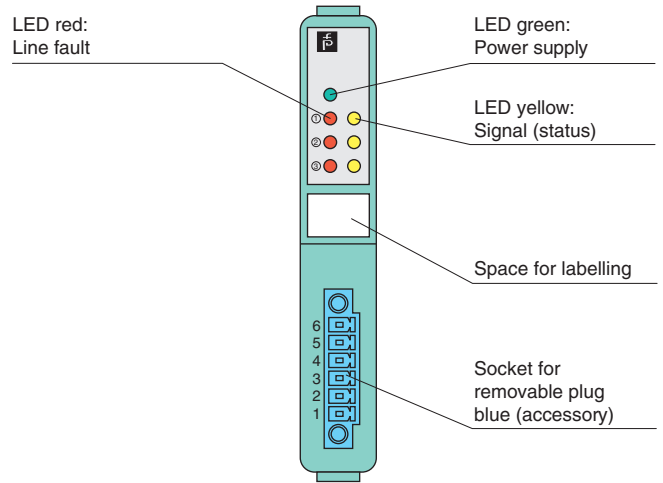
- 1 digital output, 2 digital inputs
- Inputs and output Ex ia
- Mounting in Zone 2, Class I/Div.2 or in the safe area
- Positive or negative logic selectable
- Simulation mode for service operations (forcing)
- Line fault detection (LFD)
- Permanently self-monitoring
- Output with watchdog

**Function**

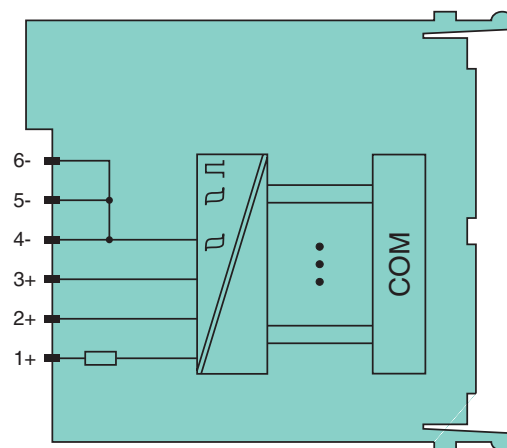
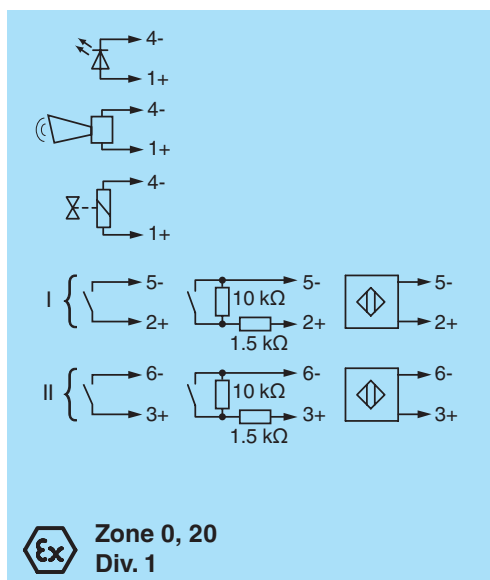
The digital output features 1 output with 2 feedback inputs. The device can be used to switch solenoids, sounders, or indicators (without line fault detection) in the field. Furthermore, the device accepts digital input signals of NAMUR sensors or mechanical contacts from the field. Open and short circuit line faults are detected. The intrinsically safe inputs and the output are galvanically isolated from the bus and the power supply.

**Assembly**

Front view



**Connection**



Zone 2  
Div. 2

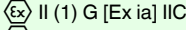
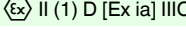
Release date 2018-11-20 15:48 Date of issue 2018-11-20 302579\_eng.xml

Refer to "General Notes Relating to Pepperl+Fuchs Product Information".

<b>Slots</b>		
Occupied slots		1
<b>Supply</b>		
Connection		backplane bus
Rated voltage	$U_r$	12 V DC , only in connection with the power supplies LB9***
Power dissipation		1.3 W
Power consumption		1.6 W
<b>Internal bus</b>		
Connection		backplane bus
Interface		manufacturer-specific bus to standard com unit
<b>Digital input</b>		
Number of channels		2
Sensor interface		
Connection		NAMUR sensor
Connection [2]		volt-free contact
Connection		channel I: 2+, 5-; channel II: 3+, 6-
Rated values		acc. to EN 60947-5-6 (NAMUR)
Switching point/switching hysteresis		1.2 ... 2.1 mA / ± 0.2 mA
Voltage		8.2 V
Internal resistor	$R_i$	1 kΩ
Line fault detection		can be switched on/off for each channel via configuration tool
Connection		mechanical switch with additional resistors (see connection diagram) proximity switches without additional wiring
Short-circuit		< 360 Ω
Open-circuit		< 0.35 mA
Minimum pulse duration		1 ms
<b>Digital output</b>		
Number of channels		1
Suitable field devices		
Field device		Solenoid Valve
Field device [2]		audible alarm
Field device [3]		visual alarm
Connection		channel I: 1+, 4-
Open loop voltage	$U_s$	22 V
Current limit	$I_{max}$	53 mA
Internal resistor	$R_i$	315 Ω
Line fault detection		can be switched on/off for each channel via configuration tool , also when turned off (every 2.5 s the valve is turned on for 2 ms)
Short-circuit		< 120 Ω
Open-circuit		> 2 kΩ
Response time		20 ms (depending on bus cycle time)
Watchdog		within 0.5 s the device goes in safe state, e.g. after loss of communication
<b>Indicators/settings</b>		
LED indication		LED green: supply LED red: line fault, per channel LED yellow: signal (status), per channel
Coding		optional mechanical coding via front socket
<b>Directive conformity</b>		
Electromagnetic compatibility		
Directive 2014/30/EU		EN 61326-1
<b>Conformity</b>		
Electromagnetic compatibility		
Degree of protection		IEC 60529
Environmental test		EN 60068-2-14
Shock resistance		EN 60068-2-27
Vibration resistance		EN 60068-2-6
Damaging gas		EN 60068-2-42
Relative humidity		EN 60068-2-56
<b>Ambient conditions</b>		
Ambient temperature		-20 ... 60 °C (-4 ... 140 °F)
Storage temperature		-25 ... 85 °C (-13 ... 185 °F)
Relative humidity		95 % non-condensing
Shock resistance		shock type I, shock duration 11 ms, shock amplitude 15 g, number of shocks 18

Release date 2018-11-20 15:48 Date of issue 2018-11-20 302579\_eng.xml

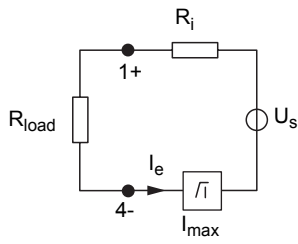
Refer to "General Notes Relating to Pepperl+Fuchs Product Information".

Vibration resistance	frequency range 10 ... 150 Hz; transition frequency: 57.56 Hz, amplitude/acceleration ± 0.075 mm/1 g; 10 cycles frequency range 5 ... 100 Hz; transition frequency: 13.2 Hz amplitude/acceleration ± 1 mm/0.7 g; 90 minutes at each resonance
Damaging gas	designed for operation in environmental conditions acc. to ISA-S71.04-1985, severity level G3
<b>Mechanical specifications</b>	
Degree of protection	IP20 when mounted on backplane
Connection	removable front connector with screw flange (accessory) wiring connection via spring terminals (0.14 ... 1.5 mm <sup>2</sup> ) or screw terminals (0.08 ... 1.5 mm <sup>2</sup> )
Mass	approx. 110 g
Dimensions	16 x 100 x 102 mm (0.63 x 3.9 x 4 inch)
<b>Data for application in connection with hazardous areas</b>	
EU-Type Examination Certificate	PTB 03 ATEX 2042
Marking	 
Input	
Voltage	U <sub>o</sub> 14.1 V
Current	I <sub>o</sub> 16 mA
Power	P <sub>o</sub> 55 mW (linear characteristic)
Internal capacitance	C <sub>i</sub> 1.65 nF
Internal inductance	L <sub>i</sub> 0 mH
Output	
Voltage	U <sub>o</sub> 24.9 V
Current	I <sub>o</sub> 91 mA
Power	P <sub>o</sub> 558 mW
Internal capacitance	C <sub>i</sub> 1.65 nF
Internal inductance	L <sub>i</sub> 0 mH
Certificate	PF 08 CERT 1234 X
Marking	
Galvanic isolation	
Input/power supply, internal bus	safe electrical isolation acc. to EN 60079-11, voltage peak value 375 V
Output/power supply, internal bus	safe electrical isolation acc. to EN 60079-11, voltage peak value 375 V
Directive conformity	
Directive 2014/34/EU	EN 60079-0:2009 EN 60079-11:2007 EN 60079-15:2010 EN 61241-11:2006
<b>International approvals</b>	
ATEX approval	PF 08 CERT 1234 X PTB 03 ATEX 2042
UL approval	E106378
Control drawing	116-0321A
Approved for	cUL (Canada): CL I Zn. 2 IIC; IS circuits for CL I Zn. 0 IIC ULus (USA): CL I Div. 2 Grp. A, B, C, D; IS circuits for CL I, II, III Div. 1 Grp. A, B, C, D, E, F, G
IECEx approval	BVS 09.0037X
Approved for	Ex nA [ia Ga] IIC T4 Gc [Ex ia Da] IIIC
EAC approval	Russia: RU C-IT.MIII06.B.00129
Marine approval	
Lloyd Register	15/20021
DNV GL Marine	TAA0000034
American Bureau of Shipping	T1450280/UN
Bureau Veritas Marine	22449/B0 BV
<b>General information</b>	
System information	The module has to be mounted in appropriate backplanes (LB9**) in Zone 2 or outside hazardous areas. Here, observe the corresponding declaration of conformity. For use in hazardous areas (e. g. Zone 2, Zone 22 or Div. 2) the module must be installed in an appropriate enclosure.
Supplementary information	EC-Type Examination Certificate, Statement of Conformity, Declaration of Conformity, Attestation of Conformity and instructions have to be observed where applicable. For information see <a href="http://www.pepperl-fuchs.com">www.pepperl-fuchs.com</a> .

Release date 2018-11-20 15:48 Date of issue 2018-11-20 302579\_eng.xml

Output data

Load calculation



$R_{load}$  = Field loop resistance  
 $U_e = U_s - R_i \times I_e$   
 $I_e = U_s / (R_i + R_{load})$

Output characteristics

