



Model Number

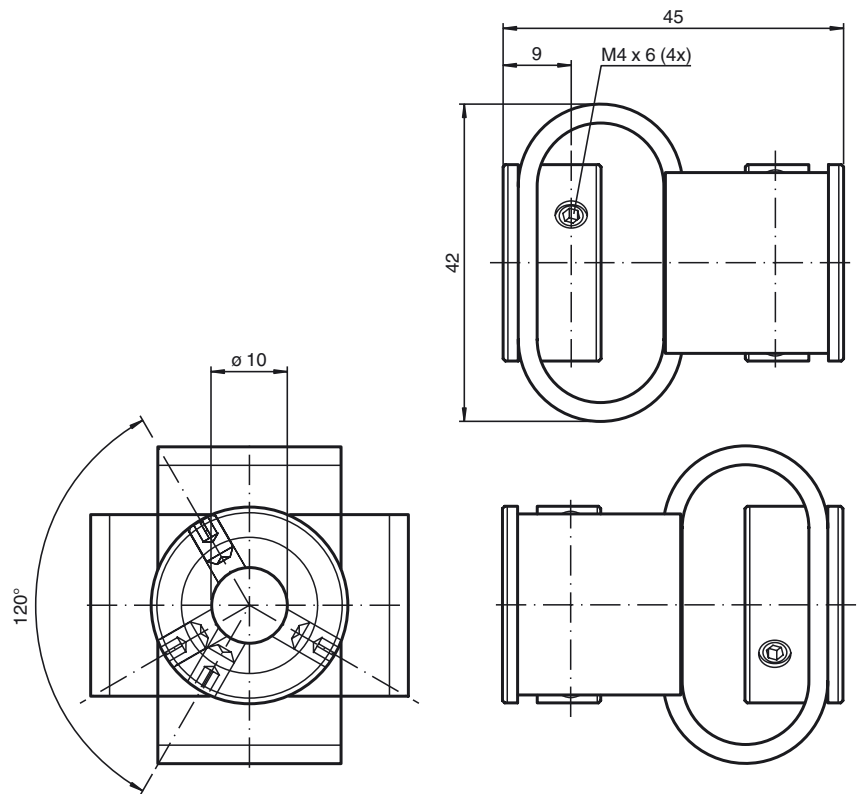
9408 10*10

Double loop coupling 10 x 10

Features

- Average torsional rigidity
- Small reset forces
- Shock- and vibration-absorbing
- Thermally and electrically insulating
- Very good compensation of radial, lateral and angular misalignments
- Maintenance-free

Dimensions



Technical data

Ambient conditions

Operating temperature -30 ... 80 °C (-22 ... 176 °F)

Mechanical specifications

Shaft diameter	10 mm
Material	
Fastener	Polyurethane
End piece	Zinc plated steel
Mass	85 g
Rotational speed	max. 3000 min
Max. torque	2 Nm
Radial offset	max. ± 3 mm
Axial offset	max. ± 4 mm
Angle error	max. ± 12 °
Torsion spring stiffness	28 Nm / rad
Radial spring stiffness	7 N / mm
Moment of inertia	106 kg m ² x 10 ⁻⁷
Mounting	clamp screws M4 x 6, DIN 916
Tightening torque of clamping screws	max. 1 Nm