



Model Number

MPZB01

Mounting bracket with vertical slots

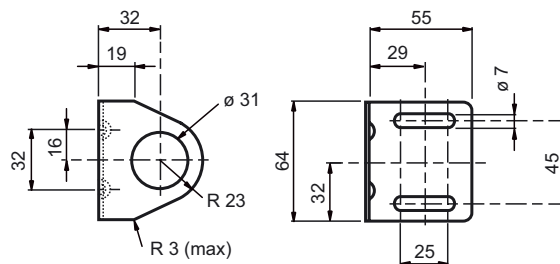
Features

- Mounting bracket

Function

This mounting bracket fits around the M30 threaded portion of the sensor base. The bracket allows the base to rotate 360°. An M30 mounting nut and lockwasher are included for securing the base to the bracket.

Dimensions



Technical data

Mechanical specifications

Material	metal
Mass	approx. 115 g

Suitable series

Series	Series 61 , MP Series
--------	-----------------------