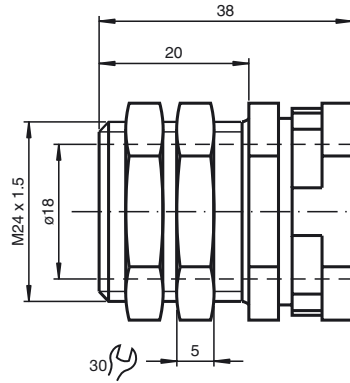




Dimensions

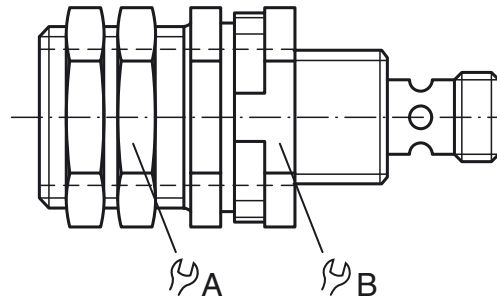


Technical data

Mechanical specifications

Material	brass, nickel-plated
Dimensions	M24 x 1.5 external thread
Tightening torque	A = 25 Nm (18.5 ft-lb) B = 4 Nm (3 ft-lb)

Installation Note



Model Number

EXG-18

Quick mounting bracket with dead stop

Features

- Clamp for threaded pipe
- Suitable for M18 sensors
- Simple and quick exchange without readjustment
- 2 slotted nuts included with delivery

Release date: 2018-05-28 15:00 Date of issue: 2018-06-12 904106_eng.xml