

Features

- User interface for PROFIBUS components
- Simple access to measurements, diagnostic and configuration data
- Supports any FDT/DTM host

Function

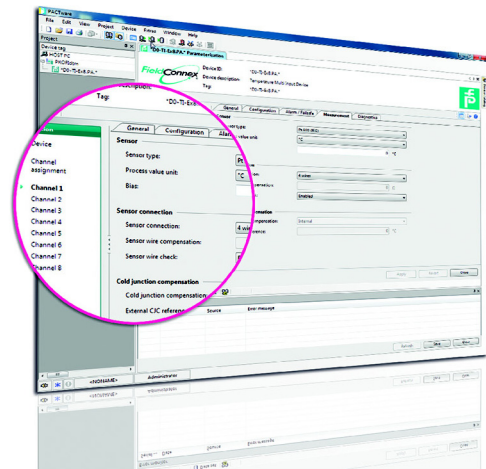
The FieldConnex® device type manager (DTM) collection provides the user interface and access to all process-relevant data online in real-time. The collection contains DTMs for FieldConnex process interfaces and PROFIBUS gateways.

The DTM provides a standard interface for integration into any distributed control system supporting FDT/DTM technology.

A DTM enables configuration and diagnostics independently of the control, operating, plant asset management, or engineering system. It provides remote access, thus improving safety for personnel and reducing time and effort for repair and plant upkeep. Early warnings from an instrument via DTM enable proactive plant upkeep only when it is needed and in time for the plant to remain in production.

For DTMs regarding advanced diagnostic modules and gateways see separate datasheets.

Assembly



Connection

General specifications	
Description	Device type manager for FieldConnex® components: HD2-GTR-4PA, PROFIBUS DP/PA gateway , *D0-TI-Ex8.PA.* , temperature multi-input device for PROFIBUS PA , *D0-MIO-Ex12.PA* , multi-input/output for PROFIBUS PA , *D0-TI-Ex8.PA.* , temperature multi-input device for PROFIBUS PA
Software	
Hardware requirements	see release notes
Software requirements	Optional: Unzip tool Administrative privileges for the software installation
Operating system	see release notes
Licensing	Full license included

Release date 2017-09-29 14:11 Date of issue 2017-09-29 t34040_eng.xml

Refer to "General Notes Relating to Pepperl+Fuchs Product Information".

Pepperl+Fuchs Group
www.pepperl-fuchs.com

USA: +1 330 486 0002
pa-info@us.pepperl-fuchs.com

Germany: +49 621 776 2222
pa-info@de.pepperl-fuchs.com

Singapore: +65 6779 9091
pa-info@sg.pepperl-fuchs.com