

Datasheet - ELDE.N-RD-GN-YE-24VDC



Command and signalling devices / Contact and light terminal blocks (EF/EL) System / Light terminal blocks with integrated multi-LED / Light terminal block ELD




- 3 colour LED module red / green / yellow
- Screw connection
- Mounting flange position 3
- 24

(Minor differences between the printed image and the original product may exist!)

Ordering details

Product type description	ELDE.N-RD-GN-YE-24VDC
Article number	103007951
EAN Code	
eCl@ss	27-37-13-02

Global Properties

Permanent light	Leuchtelement ELD
Standards	IEC/EN 60947-1, IEC 60947-5-1
Compliance with the Directives (Y/N) 	No
Terminal designations	X1-X2-X3-X4
Mounting position	arbitrarily
Materials	
- Material of the housings	Plastic, glass-fibre reinforced thermoplastic self-extinguishing
Weight	20

Mechanical data

Connection type	Screw connection
Cable section	
- Min. Cable section	0,5, rigid 0,5, flexible

- Max. Cable section	2.5, rigid 1.5, flexible
Mounting flange position	3
mounting	pluggable
terminals	Protection against polarity reversal

Ambient conditions

Ambient temperature	
- Min. environmental temperature	-25
- Max. environmental temperature	+75
Protection class	
- Protection class-Terminals	IP20

Electrical data

Rated impulse withstand voltage	4000
Rated insulation voltage	400
Rated operating voltage	24
Operating current	for each connection 18 ... 26

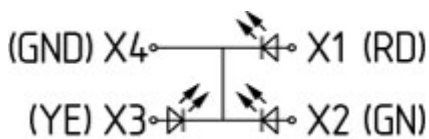
LED switching conditions display

With integrated LED (Y/N)	Yes
LED switching conditions display	
- colour of the LED	■ red – ■ green – ■ yellow




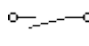
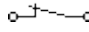
Dimensions

Dimensions	
- Width	10
- Depth	60
- Length	46

Diagram



Note Diagram

-  positive break NC contact
-  active
-  no active
-  Normally-open contact
-  Normally-closed contact

Documents

Mounting and wiring instructions (nl) 198 kB, 04.12.2018

Code: mrl_elde_nl

Mounting and wiring instructions (it) 182 kB, 09.10.2018

Code: mrl_elde_it

Mounting and wiring instructions (es) 198 kB, 04.12.2018

Code: mrl_elde_es

Mounting and wiring instructions (pl) 210 kB, 09.10.2018

Code: mrl_elde_pl

Mounting and wiring instructions (pt) 199 kB, 06.12.2018

Code: mrl_elde_pt

Mounting and wiring instructions (en) 202 kB, 19.11.2018

Code: mrl_elde_en

Mounting and wiring instructions (jp) 255 kB, 09.10.2018

Code: mrl_elde_jp

Mounting and wiring instructions (de) 194 kB, 19.11.2018

Code: mrl_elde_de

Mounting and wiring instructions (fr) 196 kB, 05.12.2018

Code: mrl_elde_fr

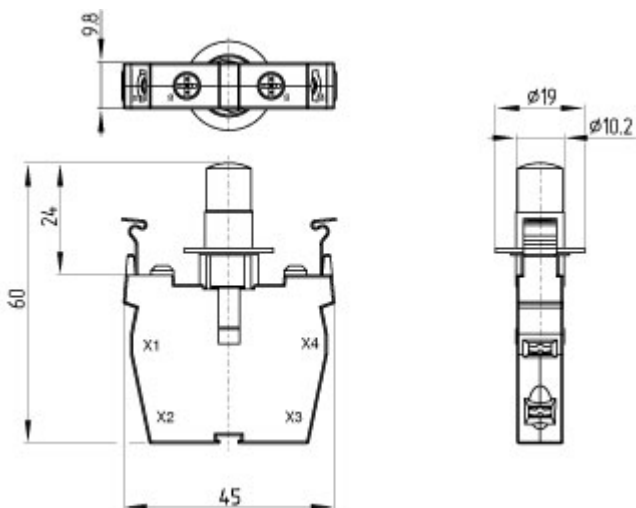
CCC certification (en) 1 MB, 20.06.2017

Code: q_efelp02

CCC certification (cn) 1 MB, 20.06.2017

Code: q_efelp03

Images



Dimensional drawing (basic component)

K.A. Schmersal GmbH & Co. KG, Mödinghofe 30, D-42279 Wuppertal

The data and values have been checked thoroughly. Technical modifications and errors excepted.

Generiert am 13.02.2019 - 12:47:40h Kasbase 3.3.0.F.64I