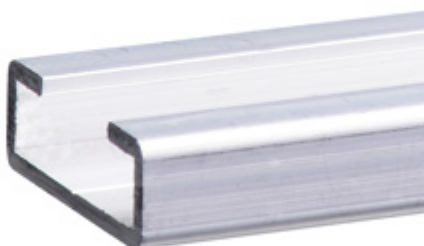


Datasheet - SE-AL10-2500

Safety-related tactile sensor / Safety edges / SE-P40 / Aluminium profile section / SE-AL1


 Preferred typ

- Aluminium profile without aluminium leg
- for Rubber profile SE-P40



(Minor differences between the printed image and the original product may exist!)

Ordering details

Product type description	SE-AL10-2500
Article number	101172179
EAN Code	4030661300320
eCl@ss	27-27-92-91

Global Properties

Permanent light	Aluminiumprofil SE-AL1
Materials	
- Material of the profile strip	Al-MG Si OF22
Weight	750
with aluminium socket (Y/N)	No

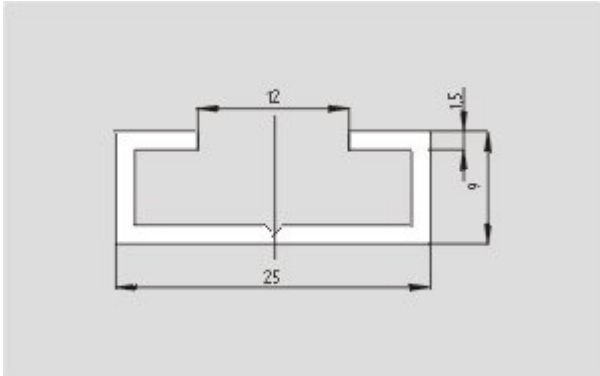
Dimensions

Dimensions	
- Width	25 mm
- Height	9 mm
- Length	2500 mm

notice

Greater lengths possible by laying several aluminium profiles in line

Images



Dimensional drawing (basic component)

K.A. Schmersal GmbH & Co. KG, Möddinghofe 30, D-42279 Wuppertal

The data and values have been checked thoroughly. Technical modifications and errors excepted.

Generiert am 13.02.2019 - 14:40:29h Kasbase 3.3.0.F.64I