

Datasheet - SLB440-ER-2-ST

Safety light barriers / SLB 440



(Minor differences between the printed image and the original product may exist!)

SLB 440 Series -

- Compact design With integral evaluation
- Height range 75 m (Reserve up to 90 m)
- Safe OSSD outputs to PLe
- Automatic start or restart interlock
- Sturdy metal enclosure with M12 connector or cable
- Version with heater for outdoor applications down to -30°C
- Set-up tool and diagnostic indication

Ordering details

| | |
|--------------------------|----------------|
| Product type description | SLB440-ER-2-ST |
| Article number | 103013522 |
| EAN Code | 4030661492346 |
| eCl@ss | 27-27-27-01 |

Approval

Approval



Classification

| | |
|------------------|----------------------------------|
| Standards | EN ISO 13849-1, EN 62061 |
| PL | up e |
| Control category | up 4 |
| PFH value | $1.5 \times 10^{-8} \text{ 1/h}$ |
| SIL | up 3 |
| Mission time | 20 Years |

Global Properties

| | |
|--------------------------------------|------------------------|
| Permanent light | SLB440 |
| Standards | EN 61496-1; EN 61496-2 |
| Compliance with the Directives (Y/N) | Yes |
| Operating resource protection class | Protection class 3 |

| | |
|---|----------------------|
| Safety type in accordance with IEC 61496-1 | 4 |
| Materials | |
| - Material of the housings | Aluminium |
| Weight | 140 |
| Beam coding (Y/N) | Yes |
| Beam coding | 2 |
| Protection field height | - |
| Range of the protection field | 300 ... 15.000 |
| Reaction time | 7 ... 22 |
| Wave length of the sensors | 880 |
| Fade-out is possible (Y/N) | No |
| Override possible (Y/N) | No |
| reduced resolution (Y/N) | No |
| Clock control possible (Y/N) | No |
| Muting possible (Y/N) | No |
| Restart block (Y/N) | Yes |
| Master/slave function | No |
| Cascadable (Y/N) | No |
| Monitoring function of downstream devices (Y/N) | Yes |
| Recommended safety-monitoring module | PSC1, SRB-E-204ST |

Mechanical data

| | |
|-----------------------------------|----------------------------|
| Detection ability for test bodies | 40; V = 1.6 m/s |
| Number of beams | 1 |
| Design of electrical connection | Connector M12 |
| - Wiring of the transmitter | connector plug M12, 4-pole |
| - Wiring of the receiver | connector plug M12, 5-pole |
| Cable length | 100 |

Ambient conditions

| | |
|--|----------------------|
| Ambient temperature | |
| - Min. environmental temperature | -30 |
| - Max. environmental temperature | +50 |
| Storage and transport temperature | |
| - Min. Storage and transport temperature | -30 |
| - Max. Storage and transport temperature | +70 |
| Protection class | IP67 to IEC/EN 60529 |

Electrical data

| | |
|---|----------------|
| Design of output switching element OSSD | PNP |
| Power consumption | |
| - Power consumption Transmitter | < 5 |
| - Power consumption Receiver | < 5 |
| Voltage type | DC |
| Switching voltage of the OSSD in high state | 24 V \pm 10% |

Outputs

| | |
|---------------------------------------|-----|
| Max. output current at secured output | 200 |
|---------------------------------------|-----|

Electrical data - Safety outputs

| | |
|---|---|
| Number of secure semi-conductor outputs | 2 |
| Number of secure outputs with contact | - |

LED switching conditions display

| | |
|--|-----|
| LED switching conditions display (Y/N) | Yes |
| Status and diagnostics | Yes |
| 7-segment display | No |

ATEX

| | |
|---|------|
| Explosion protection categories for gases | None |
| Explosion protected category for dusts | None |

Dimensions

| | |
|------------|------|
| Dimensions | |
| - Width | 27.8 |
| - Height | 91 |
| - Length | 33 |

Documents

Operating instructions (de, en) 1 MB, 04.04.2017

Code: mrl_slb440_de-en

BG-test certificate (en, de) 816 kB, 28.06.2017

Code: z_slbp02

Brochure (fr) 453 kB, 05.10.2017

Code: b_opto_slb_240_440_450_fr

Brochure (cn) 655 kB, 10.08.2017

Code: b_opto_slb_240_440_450_cn

Brochure (en) 466 kB, 31.07.2017

Code: b_opto_slb_240_440_450_en

Brochure (pt) 458 kB, 06.09.2017

Code: b_opto_slb_240_440_450_pt

Brochure (es) 468 kB, 08.08.2017

Code: b_opto_slb_240_440_450_es

Brochure (de) 497 kB, 06.07.2017

Code: b_opto_slb_240_440_450_de

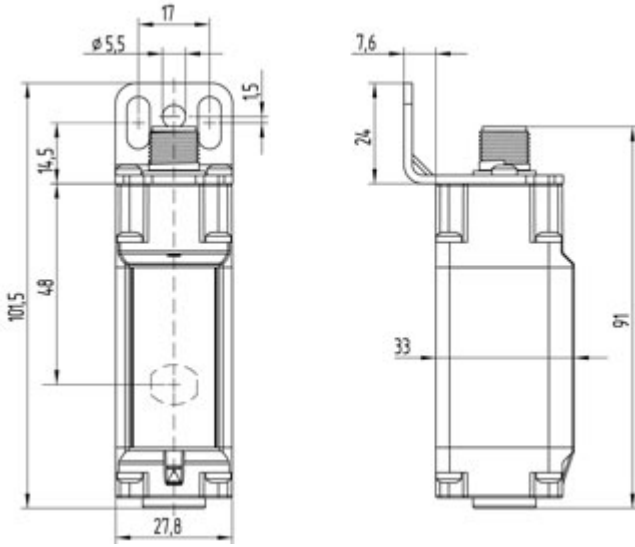
Brochure (it) 458 kB, 29.08.2017

Code: b_opto_slb_240_440_450_it

EAC certification (ru) 1 MB, 15.03.2018

Code: q_slbp01

Images



Dimensional drawing (basic component)

K.A. Schmersal GmbH & Co. KG, Mödinghofe 30, D-42279 Wuppertal

The data and values have been checked thoroughly. Technical modifications and errors excepted.

Generiert am 13.02.2019 - 14:15:51h Kasbase 3.3.0.F.64I