

Datasheet - BN 325-RG-1279

Magnetic reed switch / BN 325



(Minor differences between the printed image and the original product may exist!)

- Non-contact principle
- 1 Reed kontakts
- Long life
- Actuating surface and direction of actuation marked by switch symbol
- 85 mm x 26 mm x 24 mm
- Thermoplastic enclosure
- Spade connector
- Cable output left and 2 shielding plates
- Actuation from front

Ordering details

Product type description	BN 325-RG-1279
Article number	101147106
EAN Code	4030661141442
eCl@ss	27-27-01-04

Approval

Approval	-
----------	---

Global Properties

Permanent light	BN 325
Standards	-
Compliance with the Directives (Y/N)	Yes
suitable for elevators (Y/N)	Yes
Mounting	rear with 2 Threaded bolt
Active principle	Magnetic drive
Materials	
- Material of the housings	Plastic, glass-fibre reinforced thermoplastic
Housing construction form	rectangular, flat
Weight	94
Recommended actuator	BP 10 N, BP 10 S, 2 x BP 10 N, 2 x BP 10 S, BP 15 N, BP 15 S, 2 x BP 15/2 N, 2 x BP 15/2 S, BP 34 N, BP 34 S, BP 20 N, BP 20 S, BP 31 N, BP 31 S, BP 11 N, BP 11 S, 2 x BP 11 N, 2 x BP 11 S, BP 12 N, BP 12 S, 2 x BP 12 N, 2 x BP 12 S, BP 21 N, BP 21 S, 2 x BP 21 N, 2 x BP 21 S, BE 20, BE 20 N(S) ST 24VDC, BE 20 N(S) 48VDC
- Lift switchgear	BP 10, 2 x BP 10, 2 x BP 15/2, BP 15, BP 34

Mechanical data

Design of electrical connection	Cable output left and 2 shielding plates with LED
Cable length	1
Mechanical life	1.000.000.000 operations

Electrical lifetime	1.000.000 ... 1.000.000.000 operations
Actuating planes	front side
Switch distance	5 ... 55 BP 10N = 10 mm BP 10S = 10 mm 2 x BP 10N = 15 mm 2 x BP 10S = 15 mm BP 15N = 12 mm BP 15S = 12 mm 2 x BP 15/2N = 17 mm 2 x BP 15/2S = 17mm BP 34N = 10 ... 25mm BP 34S = 10 ... 25 mm BP 20N = 5 ... 20 mm BP 20S = 5 ... 20 mm BP 31N = 5 ... 20 mm BP 31S = 5 ... 20 mm BP 11N = 10 mm BP 11S = 10 mm 2 x BP 11N = 20 mm 2 x BP 11S = 20 mm BP 12N = 15 mm BP 12S = 15 mm 2 x BP 12N = 10 ... 25 mm 2 x BP 12S = 10 ... 25 mm BP 21N = 15 ... 40 mm BP 21S = 15 ... 40 mm 2 x BP 21N = 20 ... 55 mm 2 x BP 21S = 20 ... 55 mm BE 20 = 20 mm BE 20N = 15 mm BE 20S = 15 mm
- notice	Actuating distance up to 55 mm depending on actuating magnet and version The specifications with regard to the switching distances apply to the actuation of the individually mounted devices without ferromagnetic influence. Any change of the distance, positive either negative, is possible due to ferromagnetic interference. When multiple actuating magnets are used, the mutual interference must be observed.
Type of actuation	Magnet
restistance to shock	50 / 11
Resistance to vibration	10 ... 55 HZ, Amplitude 1 mm
Bounce duration	0,3 ... 0,6
Latching (Y/N)	Yes
Actuating speed	18
Switching point accuracy	± 0,25 mm

Ambient conditions

Ambient temperature	
- Min. environmental temperature	-25
- Max. environmental temperature	+70
Protection class	IP67

Electrical data

Design of control element	bistable contact
Number of snap-in contacts	1
Switching time - Close	1.5
Switching time - Open	0,5
Switch frequency	< 300
Dielectric strength	> 600 (50)

Switching voltage	250
Switching current	3 A
Switching capacity	120

Outputs

Design of control output	Reed kontakts
--------------------------	---------------

LED switching conditions display

LED switching conditions display (Y/N)	Yes
--	-----

ATEX

Explosion protection categories for gases	None
Explosion protected category for dusts	None

Dimensions

Dimensions of the sensor	
- Width of sensor	85
- Height of sensor	26
- Length of sensor	24

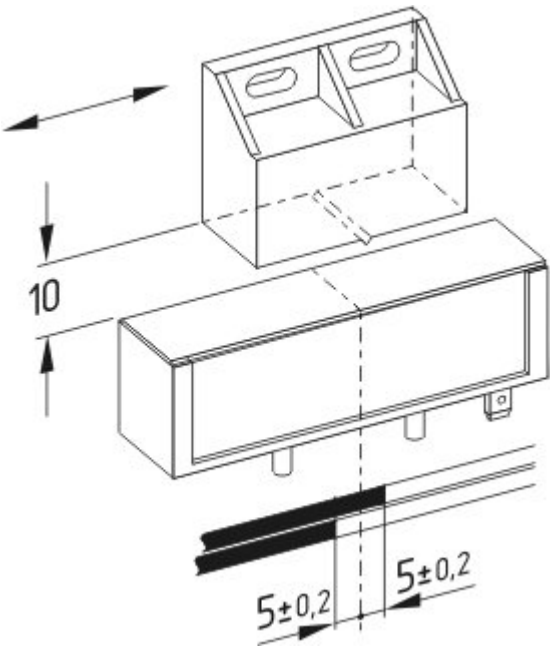
notice

The opening and closing functions depend on the direction of actuation, the actuating magnets and the polarity of the actuating magnets.

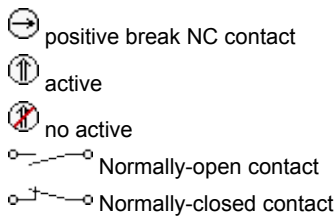
Included in delivery

Actuators must be ordered separately.

Diagram



Note Diagram



Documents

Operating instructions and Declaration of conformity (en) 224 kB, 22.11.2017

Code: mrl_bn325-r-g_en

Operating instructions and Declaration of conformity (fr) 228 kB, 05.03.2018

Code: mrl_bn325-r-g_fr

Operating instructions and Declaration of conformity (jp) 308 kB, 03.11.2015

Code: mrl_bn325-r-g_jp

Operating instructions and Declaration of conformity (pl) 259 kB, 17.05.2018

Code: mrl_bn325-r-g_pl

Operating instructions and Declaration of conformity (pt) 227 kB, 09.01.2018

Code: mrl_bn325-r-g_pt

Operating instructions and Declaration of conformity (it) 223 kB, 09.01.2018

Code: mrl_bn325-r-g_it

Operating instructions and Declaration of conformity (es) 192 kB, 10.09.2014

Code: mrl_bn325-r-g_es

Operating instructions and Declaration of conformity (es) 226 kB, 21.12.2017

Code: mrl_bn325-r-g_es

Operating instructions and Declaration of conformity (nl) 221 kB, 08.08.2018

Code: mrl_bn325-r-g_nl

Operating instructions and Declaration of conformity (de) 195 kB, 22.11.2017

Code: mrl_bn325-r-g_de

Declaration of conformity (en) 186 kB, 12.07.2018

Code: __bn_p01_en

Declaration of conformity (de) 102 kB, 08.06.2016

Code: __bn_p01

notice - Switch distance (de) 36 kB, 07.08.2009

Code: s_bnsp01

notice - Switch distance (nl) 39 kB, 07.08.2009

Code: s_bnsp04

notice - Switch distance (en) 42 kB, 07.08.2009

Code: s_bnsp02

notice - Switch distance (fr) 41 kB, 07.08.2009

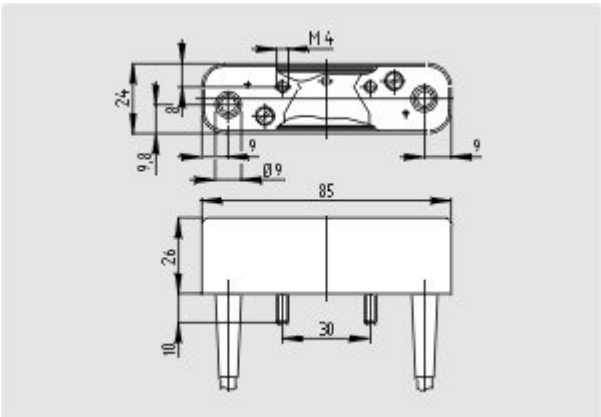
Code: s_bnsp03

notice - Switch distance (pt) 39 kB, 07.08.2009
Code: s_bnbsp10

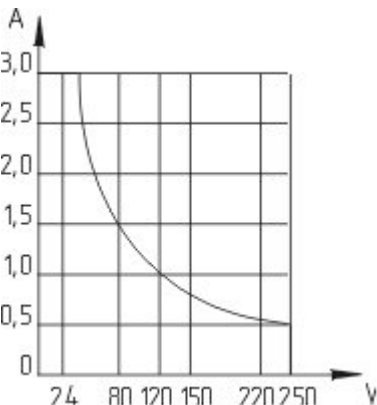
notice - Switch distance (it) 40 kB, 07.08.2009
Code: s_bnbsp05

notice - Switch distance (es) 38 kB, 07.08.2009
Code: s_bnbsp09

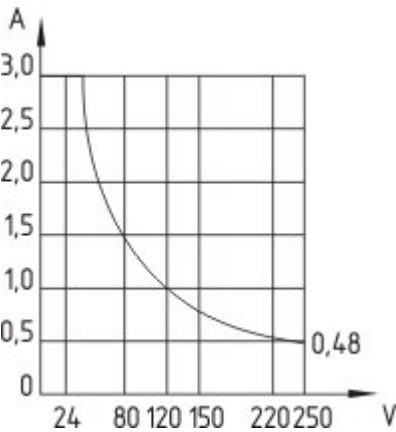
Images



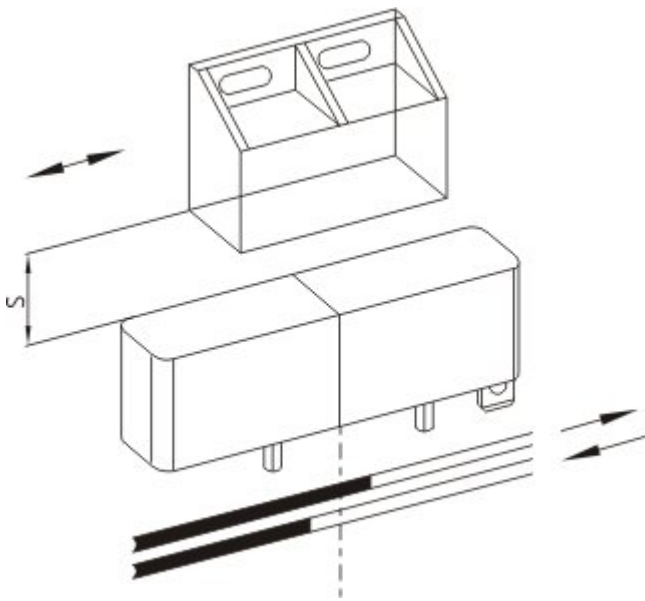
Dimensional drawing (basic component)



Characteristic curve



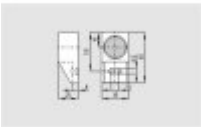
Characteristic curve



Diagram

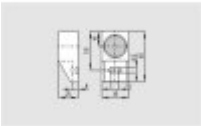
System components

Actuator



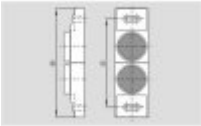
101057534 - BP 21 S

- -metal housing
- S-pole marked red
- Suitable for mounting on ferrous material



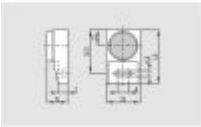
101057536 - BP 21 N

- -metal housing
- N-pole marked green
- Suitable for mounting on ferrous material



101059917 - BP 12 N

- -metal housing
- N-pole marked green
- Suitable for mounting on ferrous material

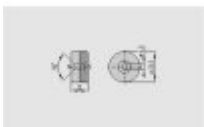
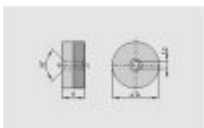
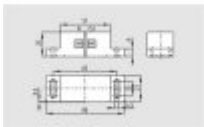
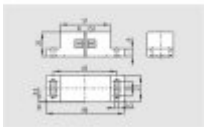
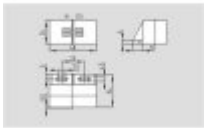
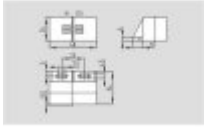
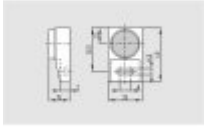


101057533 - BP 11 S

- -metal housing
- S-pole marked red
- Suitable for mounting on ferrous material

101059923 - BP 11 N

- -metal housing
- N-pole marked green
- Suitable for mounting on ferrous material



101057521 - BP 31 S

- thermoplastic enclosure
- S-pole marked red
- Suitable for mounting on ferrous material with a distance of 20 mm

101057520 - BP 31 N

- thermoplastic enclosure
- N-pole marked green
- Suitable for mounting on ferrous material with a distance of 20 mm

101057541 - BP 20 S

- -metal housing
- S-pole marked red
- Suitable for mounting on ferrous material with a distance of 20 mm

101057538 - BP 20 N

- -metal housing
- N-pole marked green
- Suitable for mounting on ferrous material with a distance of 20 mm

101057553 - BP 34

- thermoplastic enclosure
- S-pole marked red
- N-pole marked green
- Suitable for mounting on ferrous material with a distance of 25 mm

101060163 - BP 15

- thermoplastic enclosure
- N-pole marked green
- S-pole marked red
- Suitable for mounting on ferrous material with a distance of 18 mm

101057531 - BP 10

- Unenclosed
- Colour coding of poles by labels

K.A. Schmersal GmbH & Co. KG, Möddinghofe 30, D-42279 Wuppertal

The data and values have been checked thoroughly. Technical modifications and errors excepted.

Generiert am 13.02.2019 - 13:12:02h Kasbase 3.3.0.F.64I