

## Datasheet - ELDE.NGN230



Command and signalling devices / Contact and light terminal blocks (EF/EL) System / Light terminal blocks with integrated multi-LED / Light terminal block ELD

- Screw connection
- Mounting flange position 3
- green LED
- 230 VAC




(Minor differences between the printed image and the original product may exist!)

### Ordering details

Product type description	ELDE.NGN230
Article number	101166023
EAN Code	4250116200832
eCl@ss	27-37-13-02

### Global Properties

Permanent light	Leuchtelement ELD
Standards	IEC/EN 60947-1, EN 60947-5-1
Compliance with the Directives (Y/N) 	No
Terminal designations	X1-X2
Mounting position	arbitrarily
Materials	
- Material of the housings	Plastic, glass-fibre reinforced thermoplastic self-extinguishing
Weight	25

### Mechanical data

Connection type	Screw connection
Cable section	
- Min. Cable section	0,5, rigid 0,5, flexible

- Max. Cable section	2.5, rigid 1.5, flexible
Mounting flange position	3
mounting	pluggable
terminals	Protection against polarity reversal

## Ambient conditions

---

Ambient temperature	
- Min. environmental temperature	-25
- Max. environmental temperature	+80
Protection class	
- Protection class-Terminals	IP20

## Electrical data

---

Rated insulation voltage $U_i$	440 V
Rated operating voltage $U_e$	250 V

## LED switching conditions display

---

With integrated LED (Y/N)	Yes
LED switching conditions display	
- Supply voltage $U_b$	230 VAC
- colour of the LED	■ green

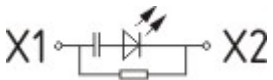
## Dimensions

---


Dimensions	
- Width	30 mm
- Depth	60 mm
- Length	46 mm

## Diagram


---

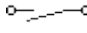


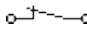
Note Diagram

 positive break NC contact

 active

 no active

 Normally-open contact

 Normally-closed contact

## Documents

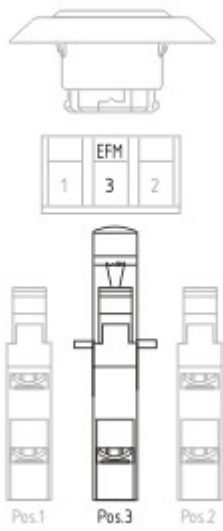
---

**CCC certification** (en) 1 MB, 20.06.2017

Code: q\_efelp02

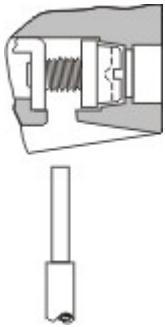
**CCC certification** (cn) 1 MB, 20.06.2017

Code: q\_efelp03



Application

---



Operating principle

---