

Datasheet - BNS 260-02/01ZG-R

Safety sensors / BNS 260

☒ Preferred typ



- Thermoplastic enclosure
- Small body
- Concealed mounting possible
- 26 mm x 36 mm x 13 mm
- Long life
- no mechanical wear
- Insensitive to transverse misalignment
- Insensitive to soiling
- Pre-wired cable

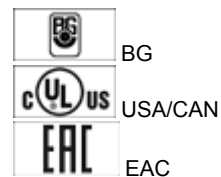
(Minor differences between the printed image and the original product may exist!)

Ordering details

Product type description	BNS 260-02/01ZG-R
Article number	101184374
EAN Code	4030661321721
eCl@ss	27-27-24-02

Approval

Approval



Classification

Standards	EN ISO 13849-1
B10d Normally-closed contact (NC)	25.000.000
- notice	at max. 20% contact load
Mission time	20 Years
notice	$MTTF_d = \frac{B_{10d}}{0,1 \times n_{op}}$ $n_{op} = \frac{d_{op} \times h_{cp} \times 3600 \text{ s/h}}{t_{cycle}}$

Global Properties

Permanent light	BNS 260
Standards	IEC 60947-5-3, BG-GS-ET-14
Compliance with the Directives (Y/N)	Yes



Category safety pursuant to EN ISO 13849-1

Materials

- | | |
|--------------------------------|---|
| - Material of the housings | Plastic, glass-fibre reinforced thermoplastic |
| - Material of the cable mantle | PVC |

Weight	55
--------	----

Coding available (Y/N)	Yes
------------------------	-----

Monitoring function of downstream devices (Y/N)	No
---	----

Prerequisite evaluation unit

Recommended safety-monitoring module

Recommended actuator	BPS 260
----------------------	---------

Mechanical data

Design of electrical connection	Cable
---------------------------------	-------

Cable length	1
--------------	---

Conductors	6 x 0,25
------------	----------

AWG-Number

mechanical installation conditions	quasi-flush
------------------------------------	-------------

Active area

Ensured switch distance ON S _{ao}	5 mm
--	------

Ensured switch distance OFF S _{ar}	15 mm
---	-------

notice

Axial misalignment

The safety sensor and the actuator tolerate a horizontal and vertical misalignment to each other. The possible misalignment depends on the distance of the active surfaces of the sensor and the actuator. The sensor is active in the tolerance range.

Type of actuation	Magnet
-------------------	--------

Direction of motion	head-on with regard to the active surface
---------------------	---

restistance to shock	30 g / 11 ms
----------------------	--------------

Resistance to vibration	10 ... 55 HZ, Amplitude 1 mm
-------------------------	------------------------------

Door hinge	right
------------	-------

Ambient conditions

Ambient temperature

- | | |
|----------------------------------|--------|
| - Min. environmental temperature | -25 °C |
| - Max. environmental temperature | +70 °C |

Storage and transport temperature

- | | |
|--|--------|
| - Min. Storage and transport temperature | -25 °C |
| - Max. Storage and transport temperature | +70 °C |

Protection class	IP67
------------------	------

Electrical data

Integrated Safety monitoring module available (Y/N)	No
---	----

Cross circuit/short circuit recognition possible (Y/N)	Yes
--	-----

Voltage type	VDC
--------------	-----

Switch frequency	max. 5 HZ
------------------	-----------

Switching voltage	max. 24 VDC
-------------------	-------------

Switching current	max. 10 mA
-------------------	------------

Switching capacity	max. 240 mW
--------------------	-------------

Outputs

Design of control output

Number of shutters	0
Number of openers	3
Design of output signal switching device	

Electrical data - Safety outputs

Number of secure semi-conductor outputs	0
Number of secure outputs with contact	2

Electrical data - Diagnostic output

Number of semi-conductor outputs with signaling function	0
Number of outputs with signaling function that already have a contact	1

LED switching conditions display

LED switching conditions display (Y/N)	Yes
- The LED is illuminated when the guard is closed.	

ATEX

Explosion protection categories for gases	None
Explosion protected category for dusts	None

Dimensions

Dimensions of the sensor	
- Width of sensor	26 mm
- Height of sensor	36 mm
- Length of sensor	13 mm

notice

Contact symbols shown for the closed condition of the guard device.
The contact configuration for versions with or without LED is identical.
Contact S21-S22 und S11-S12 must be integrated in the safety circuit

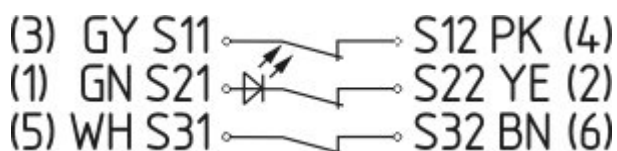
Included in delivery

Actuators must be ordered separately.

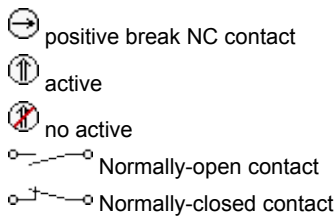
Indication legend

Switch on/off diagram
The actuating graph also applies to the BPS 260-2, the actuator with 90° inverted actuation.

Diagram



Note Diagram



Ordering code

BNS 260-(1)(2)Z(3)-(4)-(5)	
(1)	
11	1 Normally open contact (NO) / 1 Opener (NC)
02	2 Opener (NC)
(2)	
without	without Diagnostic output
/01	1 Opener (NC)
(3)	
without	without LED switching conditions display
G	with LED switching conditions display
(4)	
without	Pre-wired cable
ST	with connector
(5)	
L	Door hinge on left-hand side
R	Door hinge on right-hand side

Documents

Operating instructions and Declaration of conformity (pt) 331 kB, 24.10.2018
Code: mrl_bns260_pt

Operating instructions and Declaration of conformity (cs) 365 kB, 25.10.2018
Code: mrl_bns260_cs

Operating instructions and Declaration of conformity (fr) 331 kB, 24.10.2018
Code: mrl_bns260_fr

Operating instructions and Declaration of conformity (de) 290 kB, 01.10.2018
Code: mrl_bns260_de

Operating instructions and Declaration of conformity (it) 321 kB, 24.10.2018
Code: mrl_bns260_it

Operating instructions and Declaration of conformity (nl) 329 kB, 23.10.2018
Code: mrl_bns260_nl

Operating instructions and Declaration of conformity (pl) 365 kB, 25.10.2018
Code: mrl_bns260_pl

Operating instructions and Declaration of conformity (sv) 442 kB, 25.10.2018
Code: mrl_bns260_sv

Operating instructions and Declaration of conformity (jp) 398 kB, 24.09.2018

Code: mrl_bns260_jp

Operating instructions and Declaration of conformity (en) 330 kB, 01.10.2018

Code: mrl_bns260_en

Operating instructions and Declaration of conformity (es) 329 kB, 24.10.2018

Code: mrl_bns260_es

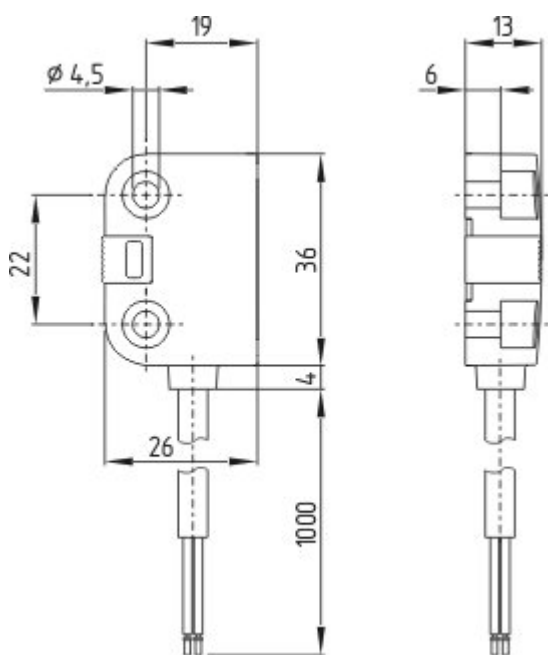
Operating instructions and Declaration of conformity (da) 343 kB, 25.10.2018

Code: mrl_bns260_da

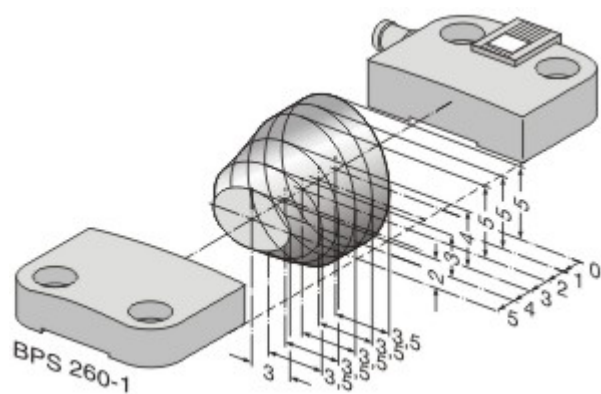
EAC certification (ru) 782 kB, 05.10.2015

Code: q_6044p17_ru

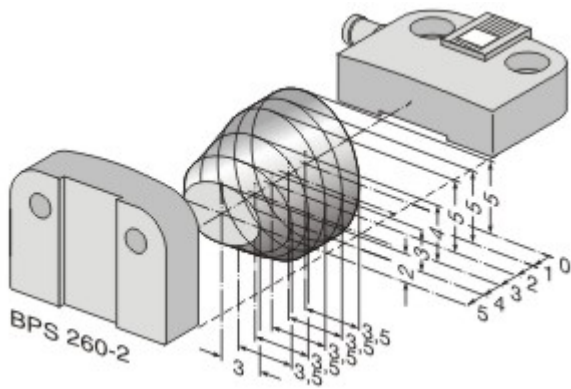
Images



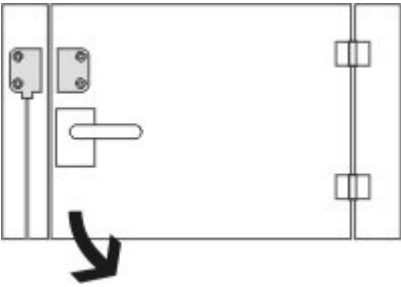
Dimensional drawing (basic component)



Characteristic curve



Characteristic curve



Clipart

System components

Actuator



101184395 - BPS 260-1

- Actuator and sensor on a mounting level



101184396 - BPS 260-2

- Actuator 90 ° attached to the sensor

Accessories



101184643 - SPACER BNS 260

to mount the magnetic safety sensor and actuator on ferromagnetic material