

Datasheet - AZM 170-11ZRKA 230 VAC

Solenoid interlock / AZM 170



Preferred typ



- Thermoplastic enclosure
- Double-insulated
- Compact design
- 90 mm x 84 mm x 30 mm
- 1 Cable entry M 20 x 1.5
- Interlock with protection against incorrect locking.
- Long life
- High holding force
- IDC method of termination
- Manual release

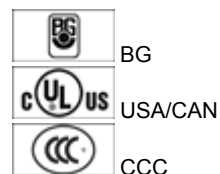
(Minor differences between the printed image and the original product may exist!)

Ordering details

| | |
|--------------------------|------------------------|
| Product type description | AZM 170-11ZRKA 230 VAC |
| Article number | 101136319 |
| EAN Code | 4030661056258 |
| eCl@ss | 27-27-26-03 |

Approval


Approval



Classification

| | |
|-----------------------------------|--|
| Standards | EN ISO 13849-1 |
| B10d Normally-closed contact (NC) | 2.000.000 |
| Mission time | 20 Years |
| notice | $MTTF_d = \frac{B_{10d}}{0,1 \times n_{op}}$ $n_{op} = \frac{d_{sp} \times h_{cp} \times 3600 \text{ s/h}}{t_{cycle}}$ |

Global Properties

| | |
|--|---|
| Permanent light | AZM 170 |
| Standards | EN 60947-5-1, BG-GS-ET-19 |
| Compliance with the Directives (Y/N)  | Yes |
| Number of actuating directions | 2 |
| Active principle | electromechanical |
| Duty cycle ED | Magnet 100 % |
| Materials | |
| - Material of the housings | Plastic, glass-fibre reinforced thermoplastic, self-extinguishing |
| - Material of the contacts | Silver |
| Housing coating | None |
| Weight | 278 |

Mechanical data

| | |
|----------------------------------|---------------------------|
| Design of electrical connection | IDC method of termination |
| Cable section | |
| - Min. Cable section | 1 x 0,75 |
| - Max. Cable section | 1 x 1.0, flexible |
| Mechanical life | > 1.000.000 operations |
| Emergency unlocking device (Y/N) | No |
| - bottom | |
| Manual release (Y/N) | Yes |
| Emergency release (Y/N) | No |
| Latching force | 30 |
| Positive break force | 8.5 |
| positive break travel | 11 mm |
| Clamping force F | 1000 N |
| Max. Actuating speed | 2 m/s |

Ambient conditions

| | |
|----------------------------------|----------------------|
| Ambient temperature | |
| - Min. environmental temperature | -25 °C |
| - Max. environmental temperature | +60 °C |
| Protection class | IP67 to IEC/EN 60529 |

Electrical data

| | |
|---|--|
| Design of control element | Normally open contact (NO), Opener (NC) |
| notice | change-over contact with double break, type Zb or 2 NC contacts, with galvanically separated contact bridges |
| Switching principle | Creep circuit element |
| Number of auxiliary contacts | 1 |
| Number of safety contacts | 1 |
| Power to unlock | No |
| Power to lock | Yes |
| Rated control voltage U_s | 230 VAC |
| Power consumption | max. 10 W |
| Rated impulse withstand voltage U_{imp} | 4 kV |
| Rated insulation voltage U_i | 250 V |
| Thermal test current I_{the} | 10 A |
| Utilisation category | AC-15: 230 V / 4 A, DC-13: 24 V / 4 A |

Max. fuse rating

6 A gG D-fuse

ATEX

Explosion protection categories for gases

None

Explosion protected category for dusts

None

Miscellaneous data

Applications



sliding safety guard,



removable guard,



hinged safety guard

Dimensions

Dimensions of the sensor

- Width of sensor 90
- Height of sensor 84
- Length of sensor 30 mm

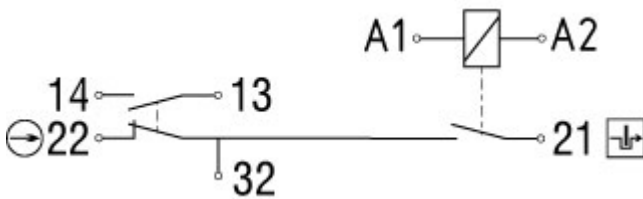
notice

This type termination (IDC) method enables simple connection of flexible conductors without the need for the use of conductor ferrules
Individual coding available on request

Manual release

- For manual release using M5 triangular key, available as accessory

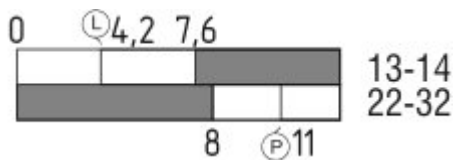
Diagram



Note Diagram

- positive break NC contact
- active
- no active
- Normally-open contact
- Normally-closed contact

Switch travel diagram



Notes Switch travel diagram

- Contact closed

- Contact open
- Setting range
- Break point
- Positive opening sequence/- angle
- VS** adjustable range of NO contact
- VÖ** adjustable range of NC contact
- N** after travel

Ordering suffix

The applicable ordering suffix is added at the end of the part number of the safety switch.

Order example: AZM 170-11ZRKA 230 VAC-**1637**

| | |
|--------------------|--|
| ...- 1637 | 0,3 µm gold-plated contacts |
| ... ST-2431 | connector M12 , Individual solenoid monitoring |

Ordering code

AZM 170(1)-(2)Z(3)K(4)-(5)-(6)-(7)

| | |
|--|--|
| (1) <i>without</i> SK | IDC method of termination Screw connection |
| (2) 11 02 12/0.0 | 1 Normally open contact (NO) / 1 Opener (NC) 2 Opener (NC) 1 Normally open contact (NO), 2 Opener (NC) / - |
| (3) <i>without</i> R I | Latching force 5 N Latching force 30 N Individual coding |
| (4) <i>without</i> A | Power to unlock Power to lock |
| (5) <i>without</i> ST ST-2431 | cable gland Connector M12 x 1 Connector M12 x 1, Individual solenoid monitoring |
| (6) 24VAC/DC 110VAC 230VAC | U _s 24 VAC/DC U _s 110 VAC U _s 230 VAC |
| (7) <i>without</i> 2197 1637 | Manual release Manual release from side (Power to unlock) gold-plated contacts |

AZM 170ST and AZM 170SK

AZM 170ST-(1)Z(2)K(3)-(4)-(5)-024

AZM 170SK-(1)Z(2)K(3)-(4)-(5)-024

| | |
|----------------|---|
| (1) | |
| 11/11 | 1 Normally open contact (NO), 1 Opener (NC) / 1 Normally open contact (NO), 1 Opener (NC) |
| 11/02 | 1 Normally open contact (NO), 1 Opener (NC) / 2 Opener (NC) |
| 12/00 | 1 Normally open contact (NO), 2 Opener (NC) / - |
| 12/11 | 1 Normally open contact (NO), 2 Opener (NC) / 1 Normally open contact (NO), 1 Opener (NC) |
| 12/02 | 1 Normally open contact (NO), 2 Opener (NC) / 2 Opener (NC) |
| 02/01 | 2 Opener (NC), - / 1 Opener (NC), - |
| 02/10 | 2 Opener (NC), - / 1 Normally open contact (NO), - |
| (2) | |
| <i>without</i> | Latching force 5 N |
| R | Latching force 30 N |
| (3) | |
| <i>without</i> | Power to unlock |
| A | Power to lock |
| (4) | |
| 1637 | gold-plated contacts |
| (5) | |
| 2197 | Manual release for Power to unlock |

Documents

Operating instructions and Declaration of conformity (fr) 701 kB, 15.02.2018

Code: mrl_azm170_fr

Operating instructions and Declaration of conformity (de) 668 kB, 11.01.2018

Code: mrl_azm170_de

Operating instructions and Declaration of conformity (it) 697 kB, 16.01.2018

Code: mrl_azm170_it

Operating instructions and Declaration of conformity (cn) 655 kB, 08.05.2017

Code: mrl_azm170_cn

Operating instructions and Declaration of conformity (nl) 702 kB, 12.07.2018

Code: mrl_azm170_nl

Operating instructions and Declaration of conformity (en) 700 kB, 11.01.2018

Code: mrl_azm170_en

Operating instructions and Declaration of conformity (jp) 843 kB, 23.08.2016

Code: mrl_azm170_jp

Operating instructions and Declaration of conformity (pl) 736 kB, 14.06.2018

Code: mrl_azm170_pl

Operating instructions and Declaration of conformity (da) 582 kB, 07.08.2012

Code: mrl_azm170_da

Operating instructions and Declaration of conformity (es) 702 kB, 17.01.2018

Code: mrl_azm170_es

BG-test certificate (en) 260 kB, 09.12.2015

Code: z_m17p02

BG-test certificate (de) 257 kB, 09.12.2015

Code: z_m17p01

CCC certification (en) 5 MB, 26.10.2018

Code: q_371p02

CCC certification (cn) 5 MB, 26.10.2018

Code: q_371p03

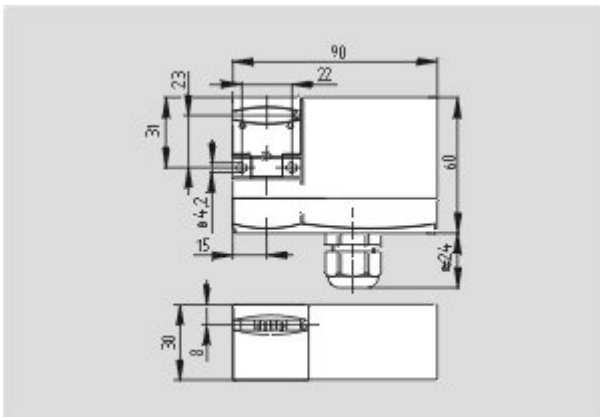
EAC certification (ru) 809 kB, 05.10.2015

Code: q_6040p17_ru

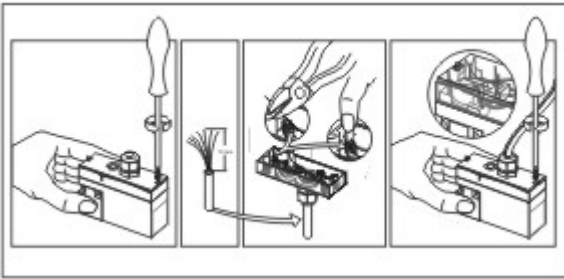
Images



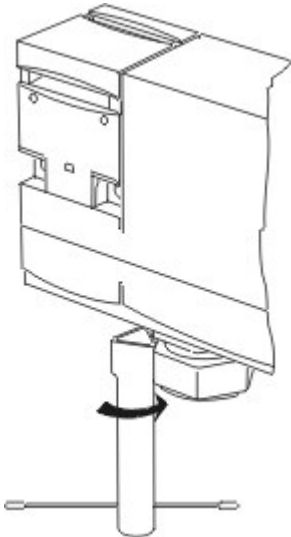
Product photo



Dimensional drawing (basic component)



Assembly example



Detail photo

System components

Actuator



101122893 - AZ 17/170-B1

- Particularly suitable for sliding doors
-



101137406 - AZ 17/170-B1-2245

- Particularly suitable for sliding doors
 - Damps vibration on guard device
-



101122895 - AZ 17/170-B5

- Particularly suitable for sliding doors
-

101139788 - AZ 17/170-B11

- Particularly suitable for sliding doors



101139789 - AZ 17/170-B15

- Particularly suitable for sliding doors



101123391 - AZM 170-B6

- Particularly suitable for hinged guards
- For very small actuating radii
- The direction of actuation can be selected by applicable insertion of the insert

Accessories



101208493 - AZM 170-B CENTERING GUIDE

- for AZ 17 and AZM 170



101100887 - TRIANGULAR KEY TK-M5

- For manual release using M5 triangular key, available as accessory
- For maintenance, installation, etc.

Connector



A-K4M12

- Pre-wired cable
- 4-pole



S-K4M12

- Connector without cable
- 4-pole