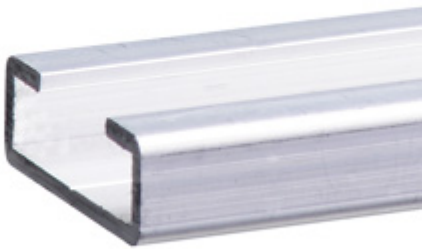


Datasheet - SE-AL10-1250

Safety-related tactile sensor / Safety edges / SE-P40 / Aluminium profile section / SE-AL1


 Preferred typ

- Aluminium profile without aluminium leg
- for Rubber profile SE-P40



(Minor differences between the printed image and the original product may exist!)

Ordering details

Product type description	SE-AL10-1250
Article number	101153893
EAN Code	4030661289120
eCl@ss	27-27-92-91

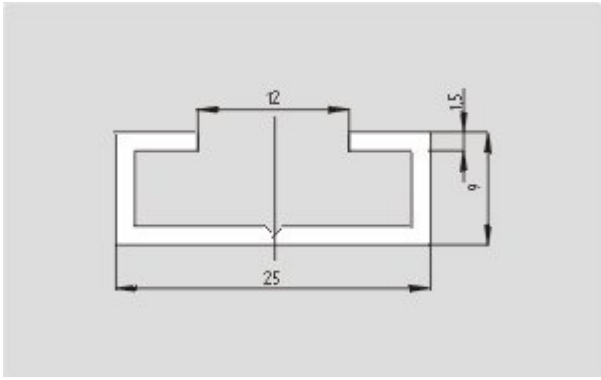
Global Properties

Permanent light	Aluminiumprofil SE-AL1
Materials	
- Material of the profile strip	Al-MG Si OF22
Weight	245
with aluminium socket (Y/N)	No

Dimensions

Dimensions	
- Width	25 mm
- Height	9 mm
- Length	1250 mm

Images



Dimensional drawing (basic component)

K.A. Schmersal GmbH & Co. KG, Möddinghofe 30, D-42279 Wuppertal

The data and values have been checked thoroughly. Technical modifications and errors excepted.

Generiert am 13.02.2019 - 14:40:28h Kasbase 3.3.0.F.64l