

## Datasheet - MSP 452-11/11Y

Rotating spindle limit switch / MSP 452

 Preferred typ


- Metal enclosure
- 4 Contacts
- 118 mm x 174 mm x 64 mm
- 2 cable entries

(Minor differences between the printed image and the original product may exist!)

### Ordering details

Product type description	MSP 452-11/11Y
Article number	101160615
EAN Code	4030661190815
eCl@ss	27-27-06-01

### Global Properties

Permanent light	MSP 452
Standards	EN 60947-5-1
Compliance with the Directives (Y/N) 	Yes
Suitable for safety functions (Y/N)	No
Standard housing (Y/N)	No
Materials	
- Material of the housings	cast iron, galvanized
Contact material	Silver
Housing coating	painted
Weight	1735
Slide form	Curvature

### Mechanical data

Design of electrical connection	Screw connection
---------------------------------	------------------

Cable section	
- Min. Cable section	1.5
- Max. Cable section	2.5
AWG-Number	12
Active principle	mechanical
Mechanical life	3.000.000 operations
notice	All indications about the cable section are including the conductor ferrules.
Design of actuating element	Plunger
actuating torque	20
Bounce duration	≤ 1.5
Switchover time	≤ 10
Contact opening	2 x 0,5
Load on spindle	max. 500 N
Max. turning speed of the spindle	max. 200 rpm min. 0,5 rpm

### Ambient conditions

---

Ambient temperature	
- Min. environmental temperature	-30
- Max. environmental temperature	+90
Protection class	IP65 to IEC/EN 60529

### Electrical data

---

Design of control element	Normally open contact (NO) / Opener (NC)
Switching principle	Snap switch element
Number of shutters	1 / 1
Number of openers	1 / 1
Rated impulse withstand voltage $U_{imp}$	4 kV
Rated insulation voltage $U_i$	250 V
Thermal test current $I_{the}$	6 A
Utilisation category	AC-15: 230 V / 2,5 A
Max. fuse rating	10 A gG D-fuse

### Dimensions

---

Dimensions of the sensor	
- Width of sensor	118
- Height of sensor	174
- Length of sensor	64
Slide diameter	10

### notice

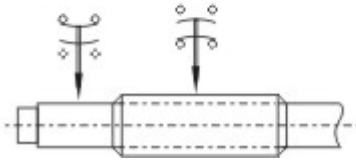
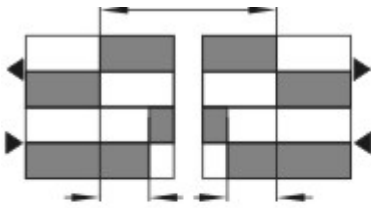
---

This rotating spindle limit switch with snap-action insert is only fit for use in normal to average operating conditions, e.g. for machine tools, cranes and conveyors. Protection class IP 65 to IEC/EN 60529.






By reversing the contacts, the spindle revolutions can be set between 4 and 55 revolutions. The run-out towards each side is at least 5 revolutions.

### Switch travel diagram

---



Notes Switch travel diagram

-  Contact closed
-  Contact open
-  Setting range
-  Break point
-  Positive opening sequence/- angle
- VS** adjustable range of NO contact
- VÖ** adjustable range of NC contact
- N** after travel

## Documents

---

**Operating instructions and Declaration of conformity (nl)** 95 kB, 20.07.2018

Code: mrlk\_posi-allgemein\_nl

**Operating instructions and Declaration of conformity (ru)** 133 kB, 09.07.2018

Code: mrlk\_posi-allgemein\_ru

**Operating instructions and Declaration of conformity (es)** 88 kB, 09.07.2018

Code: mrlk\_posi-allgemein\_es

**Operating instructions and Declaration of conformity (en)** 86 kB, 09.07.2018

Code: mrlk\_posi-allgemein\_en

**Operating instructions and Declaration of conformity (cn)** 138 kB, 09.07.2018

Code: mrlk\_posi-allgemein\_cn

**Operating instructions and Declaration of conformity (it)** 86 kB, 09.07.2018

Code: mrlk\_posi-allgemein\_it

**Operating instructions and Declaration of conformity (jp)** 285 kB, 09.07.2018

Code: mrlk\_posi-allgemein\_jp

**Operating instructions and Declaration of conformity (pl)** 118 kB, 09.07.2018

Code: mrlk\_posi-allgemein\_pl

**Operating instructions and Declaration of conformity (fr)** 85 kB, 09.07.2018

Code: mrlk\_posi-allgemein\_fr

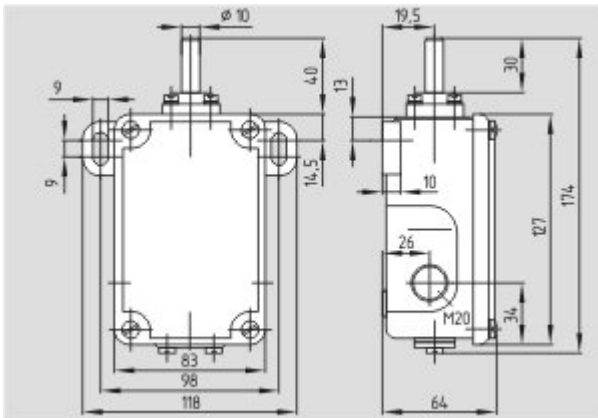
**Operating instructions and Declaration of conformity (pt)** 86 kB, 09.07.2018

Code: mrlk\_posi-allgemein\_pt

**Operating instructions and Declaration of conformity (de)** 88 kB, 09.07.2018

## Images

---



Dimensional drawing (basic component)

---

K.A. Schmersal GmbH & Co. KG, Möddinghofe 30, D-42279 Wuppertal

The data and values have been checked thoroughly. Technical modifications and errors excepted.

Generiert am 13.02.2019 - 14:15:13h Kasbase 3.3.0.F.64I