

Datasheet - AV 20LBX30U

Door locking devices / AV 20



(Minor differences between the printed image and the original product may exist!)

- left-hand model
- for 1-leaf doors
- Fail-safe locking system
- Thermoplastic enclosure
- authorised for use in passenger elevators
- Manual release by means of M5 triangular key

Ordering details


| | |
|--------------------------|---------------|
| Product type description | AV 20LBX30U |
| Article number | 101149233 |
| EAN Code | 4030661150567 |
| eCl@ss | 27-27-26-03 |

Approval

Approval



Global Properties

| | |
|--|--|
| Permanent light | AV 20 |
| Standards | EN 81-20, EN 81-50 |
| Compliance with the Directives (Y/N)  | Yes |
| Suitable for safety functions (Y/N) | Yes |
| Mounting | rear-side mounting holes |
| Number of door leaves | 1 |
| Materials | |
| - Material of the housings | glass-fibre reinforced thermoplastic, self-extinguishing |
| - Material of the contacts | Silver |
| - Locking bolt material | Brass |
| Weight | 885 |
| Latching bolt bevelling | 45 bottom |

Mechanical data

| | |
|-------------------------------------|--------------------------------------|
| Cable entry | without cable gland |
| Design of actuating element | Roller lever H65 and bearing block B |
| Orientation / Alignment | left-hand model |
| With fail-safe locking system (Y/N) | Yes |
| Manual release (Y/N) | Yes |

Permanent magnet

Ceramic oxide magnet with high coercive field strength

Ambient conditions

Ambient temperature

- Min. environmental temperature -15
- Max. environmental temperature +70

Protection class IP54

Electrical data

Design of control element Opener (NC), Normally open contact (NO)

Switching principle Slow action

- positive break NC contact 

Number of auxiliary contacts 1

Number of safety contacts 1

Rated impulse withstand voltage 6

Rated insulation voltage 500

Thermal test current 10 A

Utilisation category AC-15: 230 V / 2 A,
DC-13: 200 V / 2 A

Max. fuse rating 6 A (slow blow)

Dimensions

Dimensions

- Width 165
- Height 80
- Depth 37

Dimensions of the latching bolt

- Diameter of the latching bolt 18
- X-dimension of the latching bolt 30

notice

X-dimension of the latching bolt:

The overall latching bolt length is the result of the prescribed insertion depth of the latching bolt into the door leaf of 21 mm and the X-dimension. The X-dimension is the distance between the enclosure bottom of the door locking and the door top.

Accessories

notice Manual release using triangular key M5 available as accessory

Ordering suffix

The applicable ordering suffix is added at the end of the part number of the safety switch.

Order example: AV 20LBX30U-**GB215**

...-**GB215** additional front-side M8 mounting holes

Ordering code

AV 20(1)(2)(3)(4)(5)(6)(7)

| | | |
|----------------|--|-------------------------------------|
| (1) | | |
| L | | left-hand model |
| R | | right-hand model |
| (2) | | |
| <i>without</i> | | |
| H | | Roller H65 |
| H92 | | Roller H92 |
| H105 | | Roller H105 |
| B | | Bearing block B |
| B2 | | Bearing block B2 |
| (3) | | |
| <i>without</i> | | without cable gland |
| E4 | | cable gland M20 |
| E1 | | Cable entry |
| (4) | | |
| X... | | = 11, 5, 20, 30, 40, 45 mm |
| (5) | | |
| U | | 45° bottom |
| D | | 45° cover-side |
| R | | 45° right |
| L | | 45 ° left |
| (6) | | |
| 2509 | | using triangular key aus Metal film |
| (7) | | |
| <i>without</i> | | |
| GB215 | | |

Documents

Operating instructions and Declaration of conformity (nl) 435 kB, 26.06.2018

Code: mrl_av15_nl

Operating instructions and Declaration of conformity (pt) 419 kB, 08.03.2017

Code: mrl_av15_pt

Operating instructions and Declaration of conformity (pl) 433 kB, 17.02.2017

Code: mrl_av15_pl

Operating instructions and Declaration of conformity (de) 404 kB, 06.12.2016

Code: mrl_av15_de

Operating instructions and Declaration of conformity (es) 418 kB, 12.01.2017

Code: mrl_av15_es

Operating instructions and Declaration of conformity (cn) 501 kB, 11.05.2017

Code: mrl_av15_cn

Operating instructions and Declaration of conformity (en) 616 kB, 18.10.2016

Code: mrl_av15_en

Operating instructions and Declaration of conformity (it) 418 kB, 12.01.2017

Code: mrl_av15_it

Operating instructions and Declaration of conformity (fr) 422 kB, 12.01.2017

Code: mrl_av15_fr

Operating instructions and Declaration of conformity (jp) 506 kB, 22.08.2017

Code: mrl_av15_jp

BG-test certificate (en) 240 kB, 12.05.2016

Code: _av20p02

BG-test certificate (de) 247 kB, 12.05.2016

Code: _av20p01

CCC certification (cn) 2 MB, 11.12.2017

Code: q_av2p02

CCC certification (en) 2 MB, 11.12.2017

Code: q_av2p01

EAC certification (ru) 2 MB, 03.12.2018

Code: q_0010p17_ru

notice (es) 1 MB, 09.02.2012

Code: s_aufp01_es

notice (en) 487 kB, 09.02.2012

Code: s_aufp01_en

notice (fr) 1 MB, 09.02.2012

Code: s_aufp01_fr

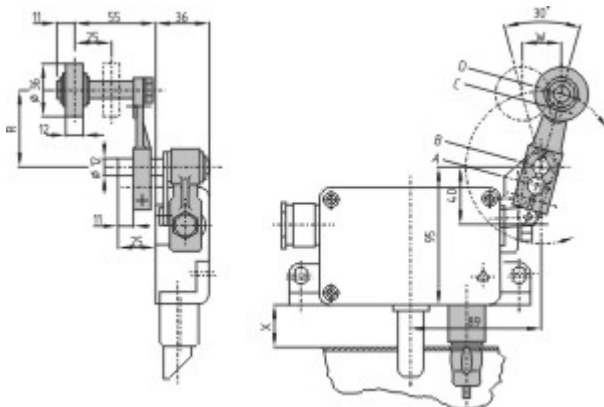
notice (it) 1 MB, 09.02.2012

Code: s_aufp01_it

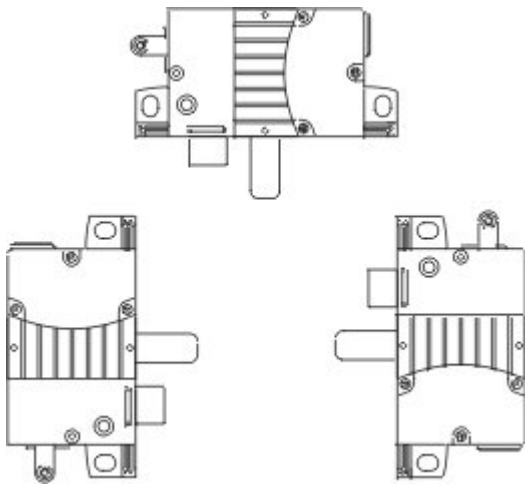
notice (de) 1 MB, 09.02.2012

Code: s_aufp01_de

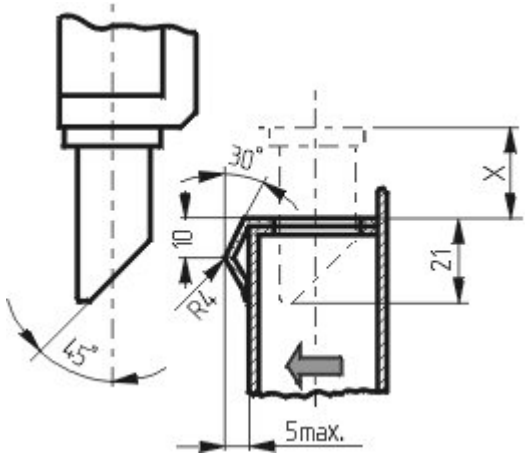
Images



Dimensional drawing (basic component)



Assembly example



Assembly example
