

Datasheet - ASM G2-CD

Download software / Configuration software (asimon)



Preferred typ



(Minor differences between the printed image and the original product may exist!)

- asimon G2 3.x
- The software asimon is a tool for the configuration and commissioning of the AS-Interface safety monitors.

Ordering details

Product type description	ASM G2-CD
Article number	101206151
EAN Code	4030661380308
eCl@ss	

Approval

Approval



Global Properties

Permanent light version	Konfigurations-Software - asimon Softwarepaket G2 3.x
Compliance with the Directives (Y/N) 	Yes

The asimon offers the user a library of icons representing different safety devices and other functional devices, i.e. one or two independent enabling paths, automatic or monitored start, stop category 0 or 1 etc. For the implementation of a new safety application the required safety devices are selected from the icon library, parameterised and assigned to the respective enabling path.

Following the successful configuration and download, the safety monitor and the safety devices can be tested and monitored with asimon.

The following functions are available with the asimon software:

- Configuration of different safety devices
- Configuration of start-modules
- Configuration logical combinations (AND, OR, RS Flip-Flops)
- Configuration of the feedback loops

- Configuration of the operating methods
- Configuration of the system-modules
- Print out of Configuration protocol

Asimon can be used offline as well as online during development and project planning. The configuration files can be saved and loaded as desired.

Hardware requirements

A Pentium®- Intel® processor of faster (or compatible models, e.g. AMD® or Cyrix®)

At least 32 Mb free random-access memory (RAM)

At least 32 Mb free disk space

A CD-ROM player

A free RS 232 (serial) interface with 9-pole SubD connector

Using a USB-RS 232 interface convertor or a serial interface card could cause communication problems with the safety monitoring module

Software requirements

Microsoft® Windows 95/98/ME/NT/2000/XP/Vista®

Included in delivery

asimon software package:

Configuration and diagnostic-software package with online documentation on CD-ROM

Documents

System Manual (en) 8 MB, 17.06.2013

Code: sh_asm_g2_cd_en

System Manual (fr) 9 MB, 17.06.2013

Code: sh_asm_g2_cd_fr

System Manual (de) 9 MB, 17.06.2013

Code: sh_asm_g2_cd_de

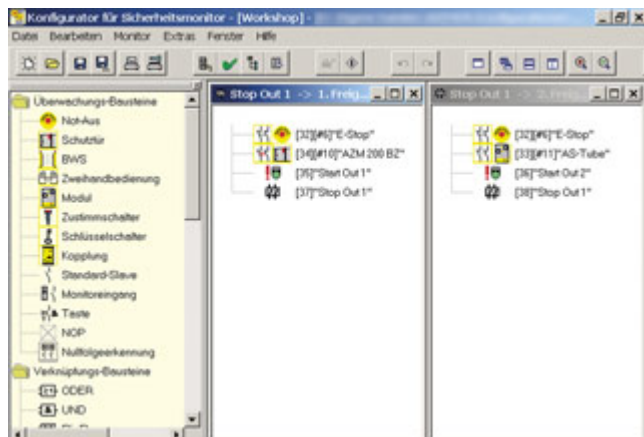
System Manual (es) 9 MB, 17.06.2013

Code: sh_asm_g2_cd_es

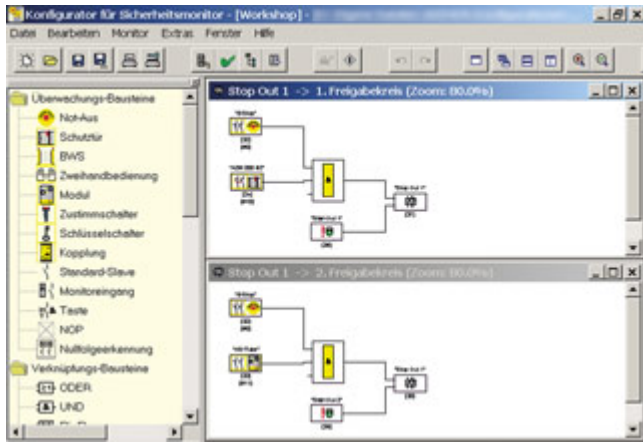
System Manual (it) 9 MB, 17.06.2013

Code: sh_asm_g2_cd_it

Images



Screen shot



Screen shot

K.A. Schmersal GmbH & Co. KG, Möddinghofe 30, D-42279 Wuppertal

The data and values have been checked thoroughly. Technical modifications and errors excepted.

Generiert am 13.02.2019 - 13:00:09h Kasbase 3.3.0.F.64I