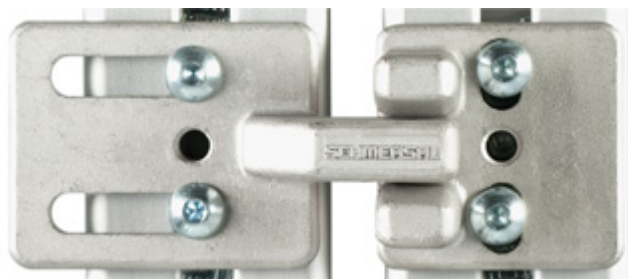


## Datasheet - TFA-020

Solenoid interlock / AZM 161 / Door-handle system STS / Accessories / Centring device



Preferred typ



(Minor differences between the printed image and the original product may exist!)

- Pre-positioning
- The actuator is independent from the centring device.
- Smooth insertion or retraction of the actuator

### Ordering details

|                          |               |
|--------------------------|---------------|
| Product type description | TFA-020       |
| Article number           | 101172607     |
| EAN Code                 | 4030661301280 |
| eCl@ss                   | 27-27-92-91   |

### Global Properties

|                 |         |
|-----------------|---------|
| Permanent light | Türfang |
| Weight          | 210     |

### Mechanical data

|         |         |
|---------|---------|
| Mounted | outside |
|---------|---------|

### Dimensions

|            |        |
|------------|--------|
| Dimensions |        |
| - Width    | 113 mm |
| - Height   | 40 mm  |
| - Depth    | 25 mm  |

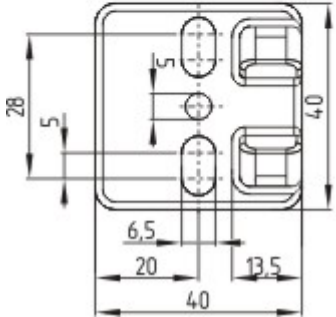
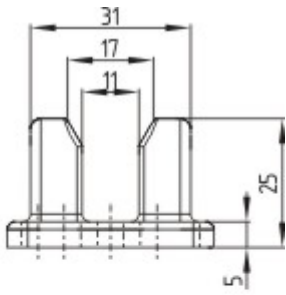
### notice

Only for AZ 16-ST30 and AZM 161-ST30

### Keywords

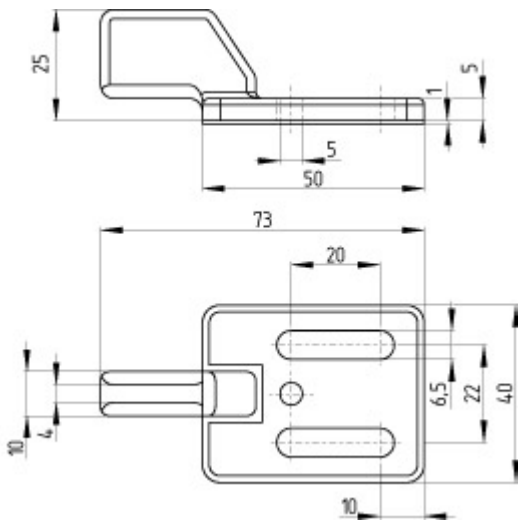
|          |                 |
|----------|-----------------|
| Keywords | Centring device |
|----------|-----------------|

### Images



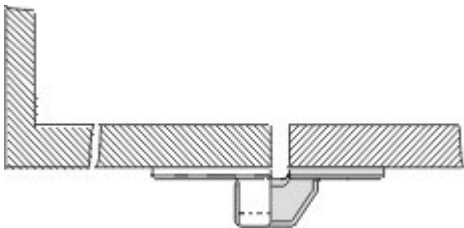
Dimensional drawing (basic component)

---



Dimensional drawing (basic component)

---



Assembly example

---



Product in the environment

---

K.A. Schmersal GmbH & Co. KG, Möddinghofe 30, D-42279 Wuppertal

The data and values have been checked thoroughly. Technical modifications and errors excepted.

Generiert am 13.02.2019 - 14:43:11h Kasbase 3.3.0.F.64l