

## Datasheet - TV4H 017-22Y



Position switch / medium heavy Position switch / Product series 015, 016, 017 - Metal enclosure / 017 / 017 Spring rod lever on shaft 4H



- Metal enclosure
- 4 Contacts
- 67 mm x 130 mm x 43 mm ( basic component)
- Actuator head can be repositioned in steps 4 x 90°
- Continuous adjustment of lever position 360°
- Lever can be transposed by 180°
- Elasticity of spring allows for inexact movement of actuator
- 3 Cable entry M 20 x 1.5

(Minor differences between the printed image and the original product may exist!)

### Ordering details


|                          |              |
|--------------------------|--------------|
| Product type description | TV4H 017-22Y |
| Article number           | 101060309    |
| EAN Code                 |              |
| eCl@ss                   | 27-27-06-01  |

### Approval

Approval



### Global Properties

|  |                                  |
|--|----------------------------------|
| Permanent light  | 017 Federstabschwenkhebel 4H     |
| Standards  | EN 60947-5-1                     |
| Compliance with the Directives (Y/N)  | Yes                              |
| Suitable for safety functions (Y/N)  | No                               |
| Standard housing (Y/N)   | No                               |
| Materials  |                                  |
| - Material of the housings   | light alloy die-casting, painted |
| - Material of the rod  | Metal film                       |
| - Material of the contacts   | Silver                           |

|                 |         |
|-----------------|---------|
| Housing coating | painted |
| Weight          | 545     |
| Slide form      |         |

## Mechanical data

---

|  |   |
|--|---|
| Design of electrical connection                              | Screw connection  |
| Cable section  |   |
| - Min. Cable section   | 1.5   |
| - Max. Cable section   | 2.5   |
| AWG-Number   | 13  |
| Active principle   | mechanical  |
| Mechanical life  | 5.000.000 operations  |
| notice   | All indications about the cable section are including the conductor ferrules. |
| Design of actuating element                                  | Rod lever   |
| actuating torque   | 25  |
| Bounce duration  |   |
| Switchover time  |   |
| Contact opening  | 2 x 2.5   |
| Actuating speed with vertical actuating angle to switch axis |   |
| - Min. Actuating speed                                       | 1   |
| - Max. Actuating speed                                       | 3   |
| - Actuating angle from left of switch axis                   | 30  |
| - Actuating angle from right of switch axis                  | 30  |

## Ambient conditions

---

|                                  |                      |
|----------------------------------|----------------------|
| Ambient temperature              |                      |
| - Min. environmental temperature | -30                  |
| - Max. environmental temperature | +90                  |
| Protection class                 | IP65 to IEC/EN 60529 |

## Electrical data

---

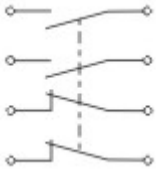
|   |   |
|---|---|
| Design of control element               | Normally open contact (NO), Opener (NC) |
| - Change-over contact with double break |   |
| Switching principle                     | Creep circuit element                   |
| - positive break NC contact             |   |
| Number of shutters                      | 2                                       |
| Number of openers                       | 2                                       |
| Rated insulation voltage $U_i$          | 500 V                                   |
| Thermal test current $I_{the}$          | 10 A                                    |
| Utilisation category                    | AC-15: 400 V / 4 A                      |
| Max. fuse rating                        | 20 A gG D-fuse                          |

## Dimensions




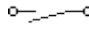
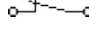
---

|                          |     |
|--------------------------|-----|
| Dimensions of the sensor |     |
| - Width of sensor        | 67  |
| - Height of sensor       | 356 |
| - Length of sensor       | 43  |
| Staff diameter           | 4   |

## Diagram



#### Note Diagram

-  positive break NC contact
-  active
-  no active
-  Normally-open contact
-  Normally-closed contact

### Ordering suffix

The applicable ordering suffix is added at the end of the part number of the safety switch.

Order example: TV4H 017-22Y- **C**

|                  |  |
|------------------|--|
| <b>...- C</b>    | Magnetic blow-out<br>Blow-out magnets available to switch high DC currents<br>Rated operating current/voltage $I_e/U_e$ : 1 A / 220 V; 4 A / 24 V<br>Utilisation category: DC-13 |
| <b>...- H</b>    | Slow action with staggered contacts  |
| <b>...- UE</b>   | Slow action with overlapping contacts  |
| <b>...- 1164</b> | Splined shaft and lever available with 10° toothing  |

### Ordering code

**(1)(2) 017-(3)Y-(4)**

**(1)**

|          |             |
|----------|-------------|
| <b>T</b> | Slow action |
| <b>M</b> | Snap action |

**(2)**

|            |                                |
|------------|--------------------------------|
| <b>S</b>   | Plunger S                      |
| <b>2S</b>  | Telescopic plunger 2S          |
| <b>K</b>   | Offset roller lever K          |
| <b>2K</b>  | Rocking offset roller lever 2K |
| <b>3K</b>  | Angle roller lever 3K          |
| <b>8H</b>  | Roller lever 8H                |
| <b>7H</b>  | Roller lever 7H                |
| <b>10H</b> | Rod lever 10H                  |
| <b>H</b>   | Roller lever H                 |
| <b>4H</b>  | Spring rod lever on shaft 4H   |
| <b>2H</b>  | Leaf-spring lever 2H           |
| <b>3H</b>  | Roller lever 3H                |
| <b>9H</b>  | Rod lever 9H                   |
| <b>6H</b>  | Leaf-spring lever 6H           |

|            |  |
|------------|--|
| <b>(3)</b> |  |
| <b>22</b>  | 2 Normally open contact (NO) / 2 Opener (NC) |
| <b>13</b>  | 1 Normally open contact (NO) / 3 Opener (NC) |
| <b>31</b>  | 3 Normally open contact (NO) / 1 Opener (NC) |
| <b>(4)</b> |  |
| <b>UE</b>  | Slow action with overlapping contacts        |
| <b>H</b>   | Slow action with staggered contacts          |
| <b>C</b>   | Magnetic blow-out                            |

## Documents

---

**Operating instructions and Declaration of conformity** (nl) 95 kB, 20.07.2018

Code: mrlk\_posi-allgemein\_nl

**Operating instructions and Declaration of conformity** (ru) 133 kB, 09.07.2018

Code: mrlk\_posi-allgemein\_ru

**Operating instructions and Declaration of conformity** (es) 88 kB, 09.07.2018

Code: mrlk\_posi-allgemein\_es

**Operating instructions and Declaration of conformity** (en) 86 kB, 09.07.2018

Code: mrlk\_posi-allgemein\_en

**Operating instructions and Declaration of conformity** (cn) 138 kB, 09.07.2018

Code: mrlk\_posi-allgemein\_cn

**Operating instructions and Declaration of conformity** (it) 86 kB, 09.07.2018

Code: mrlk\_posi-allgemein\_it

**Operating instructions and Declaration of conformity** (jp) 285 kB, 09.07.2018

Code: mrlk\_posi-allgemein\_jp

**Operating instructions and Declaration of conformity** (pl) 118 kB, 09.07.2018

Code: mrlk\_posi-allgemein\_pl

**Operating instructions and Declaration of conformity** (fr) 85 kB, 09.07.2018

Code: mrlk\_posi-allgemein\_fr

**Operating instructions and Declaration of conformity** (pt) 86 kB, 09.07.2018

Code: mrlk\_posi-allgemein\_pt

**Operating instructions and Declaration of conformity** (de) 88 kB, 09.07.2018

Code: mrlk\_posi-allgemein\_de

**Declaration of conformity** (de) 93 kB, 27.03.2017

Code: konfi\_mrl\_tm015\_de

**Declaration of conformity** (en) 91 kB, 07.11.2017

Code: konfi\_mrl\_tm015\_en

**CCC certification** (en) 4 MB, 27.10.2017

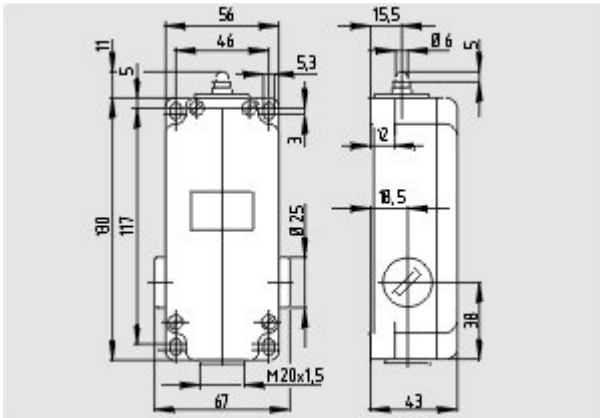
Code: q\_372p02

**CCC certification** (cn) 4 MB, 27.10.2017

Code: q\_372p03

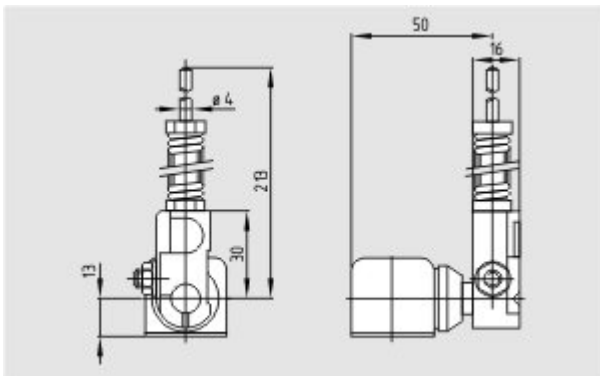
## Images

---



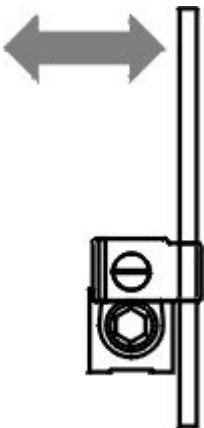
Dimensional drawing (basic component)

---



Dimensional drawing (miscellaneous)

---



Operating principle

---