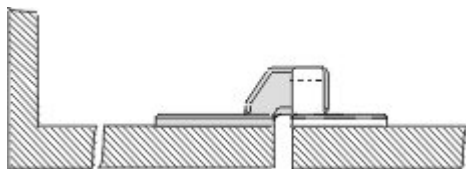


## Datasheet - TFI-010

Solenoid interlock / AZM 415 / Door-handle system STS / Accessories / Centring device



(Minor differences between the printed image and the original product may exist!)

- Pre-positioning
- The actuator is independent from the centring device.
- Smooth insertion or retraction of the actuator

### Ordering details

Product type description	TFI-010
Article number	101166329
EAN Code	4030661293769
eCl@ss	27-27-92-91

### Global Properties

Permanent light	Türfang
Weight	198

### Mechanical data

Mounted	inside
---------	--------

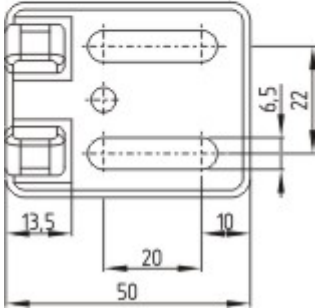
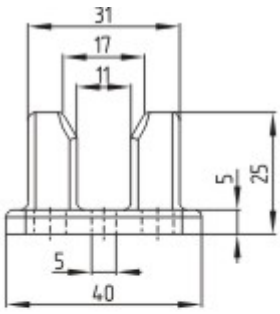
### Dimensions

Dimensions	
- Width	113 mm
- Height	50 mm
- Depth	25 mm

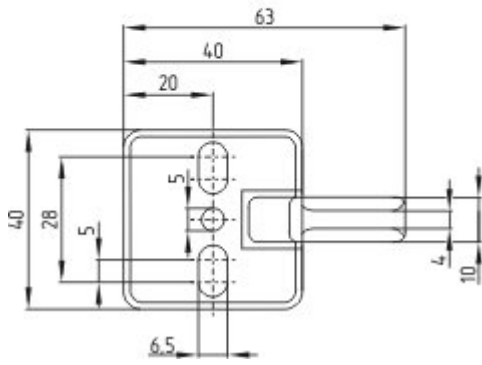
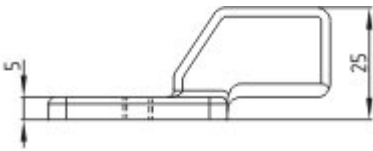
### Keywords

Keywords	Centring device
----------	-----------------

### Images



Dimensional drawing (basic component)



Dimensional drawing (basic component)

K.A. Schmersal GmbH & Co. KG, Möddinghofe 30, D-42279 Wuppertal

The data and values have been checked thoroughly. Technical modifications and errors excepted.

Generiert am 13.02.2019 - 14:48:33h Kasbase 3.3.0.F.64I