

Datasheet - AV 28LX20U 45 GR.N

Door locking devices / AV 28



- left-hand model
- for 2-leaf doors
- without Fail-safe locking system
- Metal enclosure
- for elevator plants without passenger transportation
- Manual release by means of M5 triangular key

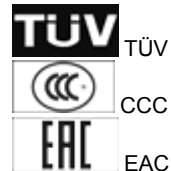
(Minor differences between the printed image and the original product may exist!)

Ordering details


| | |
|--------------------------|--------------------|
| Product type description | AV 28LX20U 45 GR.N |
| Article number | 101087277 |
| EAN Code | 4030661009353 |
| eCl@ss | 27-27-26-03 |

Approval

Approval



Global Properties

| | |
|--|--------------------------|
| Permanent light | AV 28 |
| Standards | EN 81-20, EN 81-50 |
| Compliance with the Directives (Y/N)  | Yes |
| Suitable for safety functions (Y/N) | Yes |
| Mounting | rear-side mounting holes |
| Number of door leaves | 2 |
| Materials | |
| - Material of the housings | light alloy die-casting |
| - Material of the contacts | Silver |
| - Locking bolt material | Brass |
| Weight | 1105 |
| Latching bolt bevelling | 45 bottom |

Mechanical data

| | |
|-------------|---------------------|
| Cable entry | without cable gland |
|-------------|---------------------|

| | |
|-------------------------------------|-----------------|
| Design of actuating element | Pull strap |
| Orientation / Alignment | left-hand model |
| With fail-safe locking system (Y/N) | No |
| Manual release (Y/N) | Yes |

Ambient conditions

| | |
|----------------------------------|------|
| Ambient temperature | |
| - Min. environmental temperature | -15 |
| - Max. environmental temperature | +70 |
| Protection class | IP20 |

Electrical data

| | |
|---|---|
| Design of control element | Opener (NC) |
| Switching principle | Slow action |
| - positive break NC contact  | |
| Number of auxiliary contacts | 0 |
| Number of safety contacts | 2 |
| Rated impulse withstand voltage | 6 |
| Rated insulation voltage | 400 |
| Thermal test current | 10 A |
| Utilisation category | AC-15: 230 V / 2 A, DC-13: 200 V / 2 A |
| Max. fuse rating | 6 A (slow blow) |

Dimensions

| | |
|------------------------------------|-----|
| Dimensions | |
| - Width | 285 |
| - Height | 80 |
| - Depth | 36 |
| Dimensions of the latching bolt | |
| - Diameter of the latching bolt | 18 |
| - X-dimension of the latching bolt | 20 |

notice

X-dimension of the latching bolt:

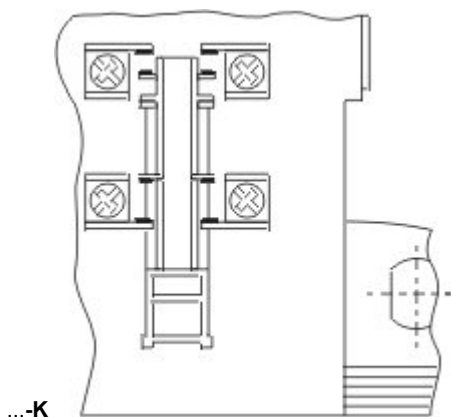
The overall latching bolt length is the result of the prescribed insertion depth of the latching bolt into the door leaf of 21 mm and the X-dimension. The X-dimension is the distance between the enclosure bottom of the door locking and the door top.

Accessories

| | |
|--------|---|
| notice | Manual release using triangular key M5 available as accessory |
|--------|---|

Ordering suffix

The applicable ordering suffix is added at the end of the part number of the safety switch.
Order example: AV 28LX20U 45 GR.N-K



The auxiliary contact K shows the top position of the switch. This enables detecting which guard is unlocked. It is always the top contact.

...-GB215

additional front-side M8 mounting holes

Ordering code

AV 28(1)(2)(3)(4)(5)45 GR.N(6)

(1)

L left-hand model
R right-hand model

(2)

without without Auxiliary contact
K with Auxiliary contact

(3)

without without cable gland
E4 cable gland M20
E1 Cable entry

(4)

X... = 11, 5, 20, 30, 40, 45 mm

(5)

U 45° bottom
D 45° cover-side
L/R 45° 1 x left / 1 x right,

(6)

GB215

Documents

Operating instructions and Declaration of conformity (nl) 435 kB, 26.06.2018

Code: mrl_av15_nl

Operating instructions and Declaration of conformity (pt) 419 kB, 08.03.2017

Code: mrl_av15_pt

Operating instructions and Declaration of conformity (pl) 433 kB, 17.02.2017

Code: mrl_av15_pl

Operating instructions and Declaration of conformity (de) 404 kB, 06.12.2016

Code: mrl_av15_de

Operating instructions and Declaration of conformity (es) 418 kB, 12.01.2017

Code: mrl_av15_es

Operating instructions and Declaration of conformity (cn) 501 kB, 11.05.2017

Code: mrl_av15_cn

Operating instructions and Declaration of conformity (en) 616 kB, 18.10.2016

Code: mrl_av15_en

Operating instructions and Declaration of conformity (it) 418 kB, 12.01.2017

Code: mrl_av15_it

Operating instructions and Declaration of conformity (fr) 422 kB, 12.01.2017

Code: mrl_av15_fr

Operating instructions and Declaration of conformity (jp) 506 kB, 22.08.2017

Code: mrl_av15_jp

BG-test certificate (en) 244 kB, 12.05.2016

Code: _av28p02

BG-test certificate (de) 251 kB, 12.05.2016

Code: _av28p01

CCC certification (en) 2 MB, 29.10.2018

Code: q_avp02

CCC certification (cn) 2 MB, 29.10.2018

Code: q_avp03

EAC certification (ru) 2 MB, 03.12.2018

Code: q_0010p17_ru

notice (es) 1 MB, 09.02.2012

Code: s_aufp01_es

notice (en) 487 kB, 09.02.2012

Code: s_aufp01_en

notice (fr) 1 MB, 09.02.2012

Code: s_aufp01_fr

notice (it) 1 MB, 09.02.2012

Code: s_aufp01_it

notice (de) 1 MB, 09.02.2012

Code: s_aufp01_de

Images
