

## Datasheet - EX-T3K 355-20ZH-3G/D



Position switches with safety function / EX-355 Metal enclosure with Actuator / EX-355 Angle roller lever 3K



(Minor differences between the printed image and the original product may exist!)

- Metal enclosure
- Wide range of alternative actuators
- Good resistance to oil and petroleum spirit
- 66,7 mm x 76 mm x 38 mm
- Actuator heads can be repositioned by 4 x 90°
- Including Ex-certified screwed cable gland and screw plug
- Mounting details to EN 50041
- 3 cable entries M 20 x 1.5
- Ex certified
- Actuation from bottom parallel to the switch, therefore only suitable for small housings.

### Ordering details

|                          |                      |
|--------------------------|----------------------|
| Product type description | EX-T3K 355-20ZH-3G/D |
| Article number           | EX-T3K 355-20ZH-3G/D |
| EAN Code                 |                      |
| eCl@ss                   | 27-27-26-01          |

### Approval

Approval



### Classification

|              |  |
|--------------|--|
| Standards    | ISO 13849-1  |
| Mission time | 20 Years   |
| notice       | $MTTF_d = \frac{B_{10d}}{0,1 \times n_{op}}$ $n_{op} = \frac{d_{op} \times h_{op} \times 3600 \text{ s/h}}{t_{cycle}}$ |

### Global Properties

|                                      |  |
|--------------------------------------|--|
| Permanent light                      | EX-T 355 Winkelhebel 3K  |
| Standards                            | IEC 60947-5-1, EN 60079-0, EN 60079-15, EN 60079-31, BG-GS-ET-15 |
| Compliance with the Directives (Y/N) | Yes  |



|                                     |                          |
|-------------------------------------|--------------------------|
| Suitable for safety functions (Y/N) | No                       |
| Materials                           |                          |
| - Material of the housings          | light alloy die-casting  |
| - Material of the contacts          | Silver                   |
| Housing coating                     | painted                  |
| Housing construction form           | Norm construction design |
| Weight                              |                          |

## Mechanical data

---

|   |   |
|---|---|
| Design of electrical connection                         | Screw connection  |
| Cable cross-section of the cable glands                 |   |
| - Min. Cable cross-section of the cable glands          | 7   |
| - Max. Cable cross-section of the cable glands          | 12  |
| Cable section   |   |
| - Min. Cable section                                    | 0,75  |
| - Max. Cable section                                    | 2.5   |
| AWG-Number  | 13  |
| Mechanical life   | 30.000.000 operations   |
| Switching frequency                                     | 5000  |
| notice  | All indications about the cable section are including the conductor ferrules. |
| Design of actuating element                             | Angle roller lever  |
| Actuating force   | 17  |
| Bounce duration   | < 2   |
| Switchover time   | in accordance with actuating speed  |
| Impact energy   | 1   |
| Actuating speed with actuating angle 30° to switch axis |   |
| - Min. Actuating speed                                  |   |
| - Max. Actuating speed                                  | 0,5   |

## Ambient conditions

---

|                                  |      |
|----------------------------------|------|
| Ambient temperature              |      |
| - Min. environmental temperature | -20  |
| - Max. environmental temperature | +60  |
| Protection class                 | IP67 |

## Electrical data

---

|                                 |  |
|---------------------------------|--|
| Design of control element       | Normally open contact (NO)               |
| Switching principle             | Slow action with staggered contacts      |
| Number of auxiliary contacts    | 2  |
| Number of safety contacts       | 0  |
| Rated impulse withstand voltage | 6  |
| Rated insulation voltage        | 500                                      |
| Thermal test current            | 10 A                                     |
| Utilisation category            | AC-15: 230 V / 4 A,<br>DC-13: 24 V / 1 A |
| Max. fuse rating                | 6 A gG D-fuse                            |

## ATEX

---

|   |  |
|---|--|
| EX-marking                                | EX II 3G Ex nC IIC T5 Gc X, EX II 3D Ex tc IIIC T90°C Dc X |
| Explosion protection categories for gases | ATEX gas ex-protection, Cat. 3                             |

|  |                                 |
|--|---------------------------------|
| Explosion protection Zones for gases   | 2                               |
| Explosion protected category for dusts | ATEX dust ex-protection, Cat. 3 |
| Explosion protection Zones for dusts   | 22                              |

Dimensions

|                          |       |
|--------------------------|-------|
| Dimensions of the sensor |       |
| - Width of sensor        | 58.25 |
| - Height of sensor       | 121.5 |
| - Length of sensor       | 38    |

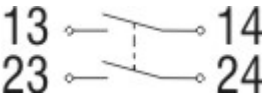
notice

Switch with 2 NO contacts are not for security tasks




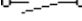
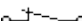
Keywords

KeywordsEx, EEx, ATEX, Ex 235, Ex 235, 235 Ex, 235ex, 235ex, ATEX 235

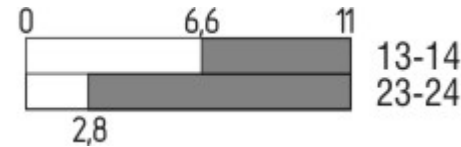
Diagram








Note Diagram

-  positive break NC contact
-  active
-  no active
-  Normally-open contact
-  Normally-closed contact

Switch travel diagram



Notes Switch travel diagram

-  Contact closed
-  Contact open
-  Setting range
-  Break point
-  Positive opening sequence/- angle
- VS** adjustable range of NO contact
- VÖ** adjustable range of NC contact
- N** after travel

Ordering suffix

The applicable ordering suffix is added at the end of the part number of the safety switch.  
 Order example: EX-T3K 355-20ZH-3G/D-**1297**

...-1297

Enclosure with transverse slotted holes

...-1637

0,3 µm gold-plated contacts

## Documents

---

**Operating instructions and Declaration of conformity (es)** 373 kB, 24.01.2018

Code: mrl\_ex-zt355\_es

**Operating instructions and Declaration of conformity (jp)** 572 kB, 05.07.2011

Code: mrl\_ex-zt355\_jp

**Operating instructions and Declaration of conformity (fr)** 376 kB, 01.02.2018

Code: mrl\_ex-zt355\_fr

**Operating instructions and Declaration of conformity (en)** 380 kB, 11.01.2019

Code: mrl\_ex-zt355\_en

**Operating instructions and Declaration of conformity (it)** 371 kB, 16.02.2018

Code: mrl\_ex-zt355\_it

**Operating instructions and Declaration of conformity (pl)** 392 kB, 16.02.2018

Code: mrl\_ex-zt355\_pl

**Operating instructions and Declaration of conformity (de)** 337 kB, 11.01.2019

Code: mrl\_ex-zt355\_de

**Operating instructions and Declaration of conformity (pt)** 378 kB, 23.01.2018

Code: mrl\_ex-zt355\_pt

**Operating instructions and Declaration of conformity (nl)** 375 kB, 31.01.2018

Code: mrl\_ex-zt355\_nl

**Brochure (de)** 7 MB, 19.10.2016

Code: b\_atep01\_de

**Brochure (en)** 7 MB, 19.10.2016

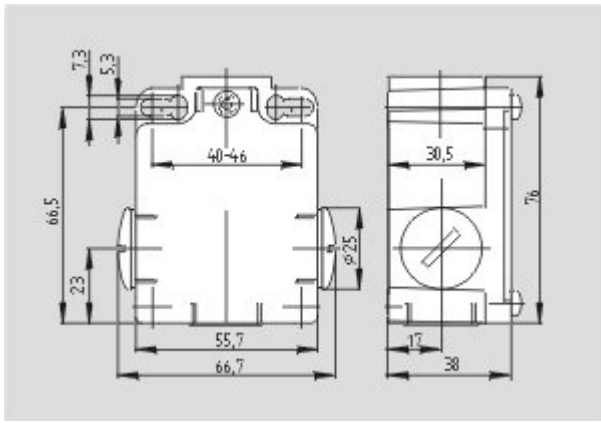
Code: b\_atep01\_en

**Brochure (it)** 3 MB, 20.07.2007

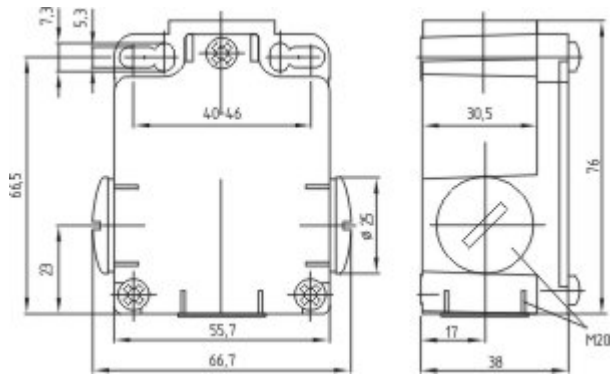
Code: b\_atep05

## Images

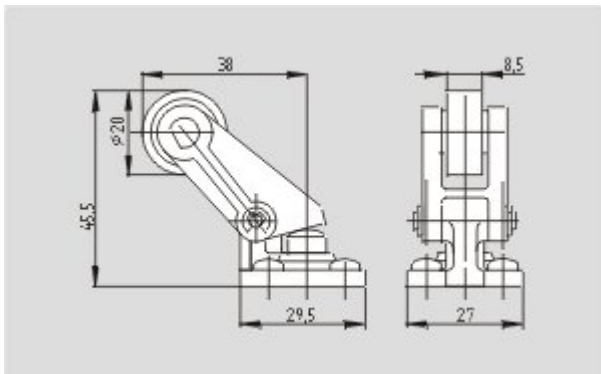
---



Dimensional drawing (basic component)



Dimensional drawing (basic component)



Dimensional drawing (actuator)

K.A. Schmersal GmbH & Co. KG, Möddinghofe 30, D-42279 Wuppertal

The data and values have been checked thoroughly. Technical modifications and errors excepted.

Generiert am 13.02.2019 - 14:09:05h Kasbase 3.3.0.F.64I