

Datasheet - NAS311ST1-AS

AS interface safety at work / Safety switchgear / Control panels and Emergency-Stop button / NAS 311 AS



- Emergency stop station
- AS-Interface M12 connector
- 85 mm x 85 mm x 97,8 mm
- Integrated AS-Interface
- Pull to reset
- Resistant to chemicals
- Thermoplastic actuators

(Minor differences between the printed image and the original product may exist!)

Ordering details

Product type description	NAS311ST1-AS
Article number	101173041
EAN Code	
eCl@ss	27-27-24-02

Approval


Approval



Classification

Standards	EN ISO 13849-1, IEC 61508
PL	up e
Control category	bis 4
PFH	1.4 x 10 ⁻⁸ /
- notice	up to max. 5.000 switching cycles/year
SIL	up 3
Mission time	20 Years

Global Properties

Permanent light	NAS311AS
Standards	EN 50295, EN 60947-5-1, EN ISO 13849-1, IEC 61508; EN ISO 13850
Compliance with the Directives (Y/N) 	Yes
Materials	
- Material of the housings	Plastic
Weight	700

Mechanical data

Design of electrical connection	connector plug M12, 4-pole
connector	bottom

Ambient conditions

Ambient temperature	
- Min. environmental temperature	-25
- Max. environmental temperature	+60
Storage and transport temperature	
- Min. Storage and transport temperature	-25
- Max. Storage and transport temperature	+85
Relative humidity	30 ... 95
- non-condensing	
- non-icing	
Protection class	IP65 to IEC/EN 60529

Electrical data - AS interface

AS-i Supply voltage	26.5 ... 31.6 VDC, Protection against polarity reversal
AS-i operating current	≤ 50
AS-i Device insulation	internally short-circuit proof
AS-i Specification	
- version	V 2.1
- Profile	S-7.B.0.E
- IO-Code	0x7
- ID-Code	0xB
- ID-Code1	0xF
- ID-Code2	0xE
AS-i Inputs	
- Channel 1	Data bits DI 0/DI 1= dynamic code transmission
- Channel 2	Data bits DI 2/DI 3= dynamic code transmission
AS-i Outputs	DO 0 ... DO 3 not used
AS-i Parameter bits	P0 ... P3 not used
AS-i input module address	0
- Default on address 0, programmable via the AS-Interface Master or Hand-held programming device	

LED switching conditions display

LED switching conditions display (Y/N)	No
--	----

ATEX

Explosion protection categories for gases	None
---	------

Explosion protected category for dusts

None

Dimensions

Dimensions of the sensor

- Width of sensor	85
- Height of sensor	85
- Length of sensor	97.8

Pin assignment

1	+
2	None
3	-
4	None

Documents

Operating instructions and Declaration of conformity (jp) 875 kB, 19.09.2011

Code: mrl_nas311as_jp

Operating instructions and Declaration of conformity (pl) 256 kB, 06.06.2018

Code: mrl_nas311as_pl

Operating instructions and Declaration of conformity (de) 226 kB, 08.12.2017

Code: mrl_nas311as_de

Operating instructions and Declaration of conformity (it) 244 kB, 12.02.2018

Code: mrl_nas311as_it

Operating instructions and Declaration of conformity (en) 243 kB, 08.12.2017

Code: mrl_nas311as_en

Operating instructions and Declaration of conformity (nl) 245 kB, 01.08.2018

Code: mrl_nas311as_nl

Operating instructions and Declaration of conformity (fr) 247 kB, 28.02.2018

Code: mrl_nas311as_fr

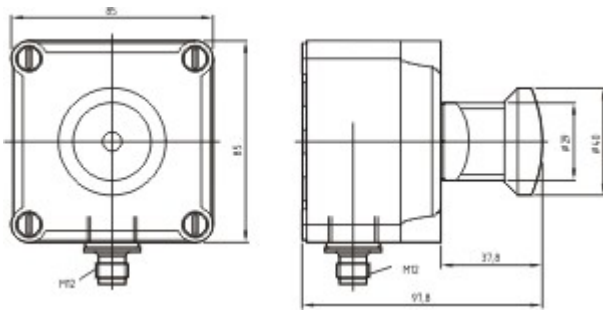
Operating instructions and Declaration of conformity (pt) 249 kB, 16.03.2018

Code: mrl_nas311as_pt

Operating instructions and Declaration of conformity (es) 248 kB, 12.02.2018

Code: mrl_nas311as_es

Images



Dimensional drawing (basic component)

K.A. Schmersal GmbH & Co. KG, Mödinghofe 30, D-42279 Wuppertal

The data and values have been checked thoroughly. Technical modifications and errors excepted.

Generiert am 13.02.2019 - 12:39:06h Kasbase 3.3.0.F.64I