

## Datasheet - T2S 017-13Y



Position switch / medium heavy Position switch / Product series 015, 016, 017 - Metal enclosure / 017 / 017 Telescopic plunger 2S



- Metal enclosure
- 4 Contacts
- 67 mm x 130 mm x 43 mm ( basic component)
- With large after-travel
- Actuator head with captive stainless steel ball actuator
- 3 Cable entry M 20 x 1.5

(Minor differences between the printed image and the original product may exist!)

### Ordering details

|                          |               |
|--------------------------|---------------|
| Product type description | T2S 017-13Y   |
| Article number           | 101054934     |
| EAN Code                 | 4030661002521 |
| eCl@ss                   | 27-27-06-01   |

### Approval

Approval



### Global Properties

|                                      |                                  |
|--------------------------------------|----------------------------------|
| Permanent light                      | 017 Teleskopdruckbolzen 2S       |
| Standards                            | EN 60947-5-1                     |
| Compliance with the Directives (Y/N) | Yes                              |
| Suitable for safety functions (Y/N)  | No                               |
| Standard housing (Y/N)               | No                               |
| Materials                            |                                  |
| - Material of the housings           | light alloy die-casting, painted |
| - Material of the contacts           | Silver                           |
| Housing coating                      | painted                          |
| Weight                               | 465                              |

## Mechanical data

---

|  |   |
|--|---|
| Design of electrical connection                              | Screw connection  |
| Cable section  |   |
| - Min. Cable section   | 1.5   |
| - Max. Cable section   | 2.5   |
| AWG-Number   | 13  |
| Active principle   | mechanical  |
| Mechanical life  | 5.000.000 operations  |
| notice   | All indications about the cable section are including the conductor ferrules. |
| Design of actuating element                                  | Plunger   |
| Actuating force  | 24 N  |
| Bounce duration  |   |
| Switchover time  |   |
| Contact opening  | 2 x 2.5   |
| Actuating speed with vertical actuating angle to switch axis |   |
| - Min. Actuating speed                                       | 1   |
| - Max. Actuating speed                                       | 1   |
| - Actuating angle  | 20  |

## Ambient conditions

---

|                                  |                      |
|----------------------------------|----------------------|
| Ambient temperature              |                      |
| - Min. environmental temperature | -30                  |
| - Max. environmental temperature | +90                  |
| Protection class                 | IP65 to IEC/EN 60529 |

## Electrical data

---

|   |   |
|---|---|
| Design of control element               | Normally open contact (NO), Opener (NC) |
| - Change-over contact with double break |   |
| Switching principle                     | Creep circuit element                   |
| - positive break NC contact             |   |
| Number of shutters                      | 1                                       |
| Number of openers                       | 3                                       |
| Rated insulation voltage $U_i$          | 500 V                                   |
| Thermal test current $I_{the}$          | 10 A                                    |
| Utilisation category                    | AC-15: 400 V / 4 A                      |
| Max. fuse rating                        | 20 A gG D-fuse                          |

## Dimensions

---

|                          |     |
|--------------------------|-----|
| Dimensions of the sensor |     |
| - Width of sensor        | 67  |
| - Height of sensor       | 185 |
| - Length of sensor       | 43  |
| Slide diameter           | 10  |

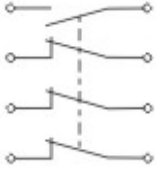
## notice

---




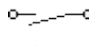
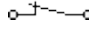
|        |   |
|--------|---|
| notice | <b>Actuation from the side of the plunger should be avoided, since this reduces the mechanical life of the position switch.</b> |
|--------|---|

## Diagram

---



### Note Diagram

-  positive break NC contact
-  active
-  no active
-  Normally-open contact
-  Normally-closed contact

## Ordering suffix

---

The applicable ordering suffix is added at the end of the part number of the safety switch.

Order example: T2S 017-13Y- **C**

|                |  |
|----------------|--|
| ...- <b>C</b>  | Magnetic blow-out<br>Blow-out magnets available to switch high DC currents<br>Rated operating current/voltage $I_e/U_e$ : 1 A / 220 V; 4 A / 24 V<br>Utilisation category: DC-13 |
| ...- <b>H</b>  | Slow action with staggered contacts  |
| ...- <b>UE</b> | Slow action with overlapping contacts  |
| ...- <b>Q</b>  | Available with bellows to protect against heavy soiling  |

## Ordering code

---

(1)(2) 017-(3)Y-(4)

(1)

|   |             |
|---|-------------|
| T | Slow action |
| M | Snap action |

(2)

|     |                                |
|-----|--------------------------------|
| S   | Plunger S                      |
| 2S  | Telescopic plunger 2S          |
| K   | Offset roller lever K          |
| 2K  | Rocking offset roller lever 2K |
| 3K  | Angle roller lever 3K          |
| 8H  | Roller lever 8H                |
| 7H  | Roller lever 7H                |
| 10H | Rod lever 10H                  |
| H   | Roller lever H                 |
| 4H  | Spring rod lever on shaft 4H   |
| 2H  | Leaf-spring lever 2H           |
| 3H  | Roller lever 3H                |
| 9H  | Rod lever 9H                   |

|            |  |
|------------|--|
| <b>6H</b>  | Leaf-spring lever 6H                         |
| <b>(3)</b> |  |
| <b>22</b>  | 2 Normally open contact (NO) / 2 Opener (NC) |
| <b>13</b>  | 1 Normally open contact (NO) / 3 Opener (NC) |
| <b>31</b>  | 3 Normally open contact (NO) / 1 Opener (NC) |
| <b>(4)</b> |  |
| <b>UE</b>  | Slow action with overlapping contacts        |
| <b>H</b>   | Slow action with staggered contacts          |
| <b>C</b>   | Magnetic blow-out                            |

## Documents

---

**Operating instructions and Declaration of conformity** (nl) 95 kB, 20.07.2018

Code: mrlk\_posi-allgemein\_nl

**Operating instructions and Declaration of conformity** (ru) 133 kB, 09.07.2018

Code: mrlk\_posi-allgemein\_ru

**Operating instructions and Declaration of conformity** (es) 88 kB, 09.07.2018

Code: mrlk\_posi-allgemein\_es

**Operating instructions and Declaration of conformity** (en) 86 kB, 09.07.2018

Code: mrlk\_posi-allgemein\_en

**Operating instructions and Declaration of conformity** (cn) 138 kB, 09.07.2018

Code: mrlk\_posi-allgemein\_cn

**Operating instructions and Declaration of conformity** (it) 86 kB, 09.07.2018

Code: mrlk\_posi-allgemein\_it

**Operating instructions and Declaration of conformity** (jp) 285 kB, 09.07.2018

Code: mrlk\_posi-allgemein\_jp

**Operating instructions and Declaration of conformity** (pl) 118 kB, 09.07.2018

Code: mrlk\_posi-allgemein\_pl

**Operating instructions and Declaration of conformity** (fr) 85 kB, 09.07.2018

Code: mrlk\_posi-allgemein\_fr

**Operating instructions and Declaration of conformity** (pt) 86 kB, 09.07.2018

Code: mrlk\_posi-allgemein\_pt

**Operating instructions and Declaration of conformity** (de) 88 kB, 09.07.2018

Code: mrlk\_posi-allgemein\_de

**Declaration of conformity** (de) 93 kB, 27.03.2017

Code: konfi\_mrl\_tm015\_de

**Declaration of conformity** (en) 91 kB, 07.11.2017

Code: konfi\_mrl\_tm015\_en

**CCC certification** (en) 4 MB, 27.10.2017

Code: q\_372p02

CCC certification (cn) 4 MB, 27.10.2017

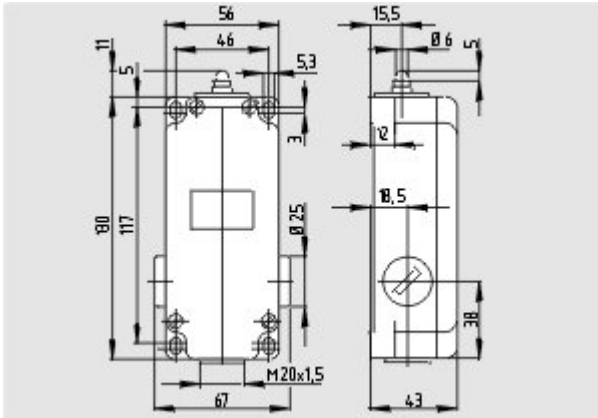
Code: q\_372p03

EAC certification (ru) 388 kB, 20.01.2016

Code: q\_1527p17\_ru

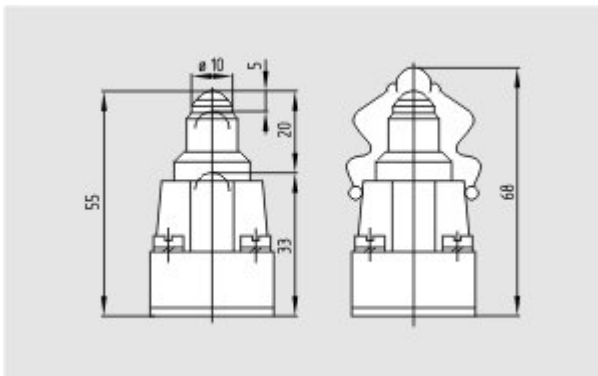
## Images

---



Dimensional drawing (basic component)

---



Dimensional drawing (miscellaneous)

---



Operating principle

---

K.A. Schmersal GmbH & Co. KG, Möddinghofe 30, D-42279 Wuppertal

The data and values have been checked thoroughly. Technical modifications and errors excepted.

Generiert am 13.02.2019 - 13:38:14h Kasbase 3.3.0.F.64I