

## Datasheet - ELE230



Command and signalling devices / Contact and light terminal blocks (EF/EL) System / Light terminal blocks (as voltage supply) with Ba9S holder / Light terminal block EL

• not suitable for operation with filament lamp or glow lamp



(Minor differences between the printed image and the original product may exist!)

### Ordering details


Product type description	ELE230
Article number	101006534
EAN Code	4250116201105
eCl@ss	27-37-13-02

### Approval

Approval



### Global Properties

Permanent light	Leuchtelement EL
Standards	IEC/EN 60947-1, EN 60947-5-1
Compliance with the Directives (Y/N) 	No
Terminal designations	X1-X2
Mounting position	arbitrarily
Materials	
- Material of the housings	Plastic, glass-fibre reinforced thermoplastic self-extinguishing
Weight	20

## Mechanical data

---

Connection type	Screw connection
Cable section	
- Min. Cable section	0,5, rigid 0,5, flexible
- Max. Cable section	2.5, rigid 1.5, flexible
Mounting flange position	3
mounting	pluggable
terminals	Protection against polarity reversal
Tightening torque for fixing screws	max. 1 Nm

## Ambient conditions

---

Ambient temperature	
- Min. environmental temperature	-25
- Max. environmental temperature	+80
Protection class	
- Protection class-Terminals	IP20

## Electrical data

---

Rated insulation voltage $U_i$	440 V
Rated operating voltage $U_e$	250 V

## LED switching conditions display

---

With integrated LED (Y/N)	No
LED switching conditions display	
- Supply voltage $U_B$	230 VAC
- colour of the LED	without

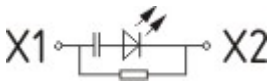
## Dimensions

---


Dimensions	
- Width	10 mm
- Length	46 mm
- Depth	60 mm


## Diagram


---



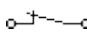
Note Diagram

 positive break NC contact

 active

 no active

 Normally-open contact

 Normally-closed contact

## Documents

---

**CCC certification** (en) 1 MB, 20.06.2017

Code: q\_efelp02

**CCC certification** (cn) 1 MB, 20.06.2017

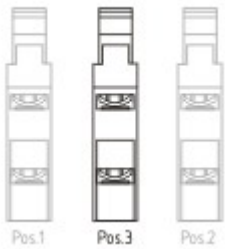
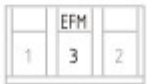
Code: q\_efelp03

**EAC certification** (ru) 779 kB, 05.10.2015

Code: q\_6043p17\_ru

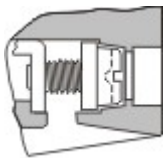
## Images

---



### Application

---



### Operating principle

---

K.A. Schmersal GmbH & Co. KG, Mödinghofe 30, D-42279 Wuppertal

The data and values have been checked thoroughly. Technical modifications and errors excepted.

Generiert am 13.02.2019 - 12:47:25h Kasbase 3.3.0.F.64I