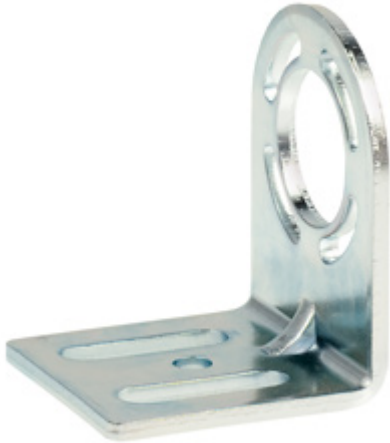


Datasheet - MS-1030

Safety light curtains, Safety light grids / Accessories / Mounting angle / Mounting set



- Kit with 4 mounting angles
- for SLG 420



(Minor differences between the printed image and the original product may exist!)

Ordering details

Product type description	MS-1030
Article number	101207756
EAN Code	4030661379005
eCl@ss	27-37-12-81

Global Properties

Permanent light	Montagesatz
Material	Steel
Weight	
Recommended combinations	SLG 420

Dimensions

Dimensions	
- Width	40 mm
- Height	52 mm
- Depth	42 mm

Included in delivery

Mounting angle	4 piece
Screws	16 piece

Images

K.A. Schmersal GmbH & Co. KG, Möddinghofe 30, D-42279 Wuppertal

The data and values have been checked thoroughly. Technical modifications and errors excepted.

Generiert am 13.02.2019 - 14:16:26h Kasbase 3.3.0.F.64I