

Datasheet - ELDE.NGB230



Command and signalling devices / Contact and light terminal blocks (EF/EL) System / Light terminal blocks with integrated multi-LED / Light terminal block ELD

- Screw connection
- Mounting flange position 3
- yellow LED
- 230 VAC




(Minor differences between the printed image and the original product may exist!)

Ordering details

Product type description	ELDE.NGB230
Article number	101166024
EAN Code	4250116200825
eCl@ss	27-37-13-02

Global Properties

Permanent light	Leuchtelement ELD
Standards	IEC/EN 60947-1, EN 60947-5-1
Compliance with the Directives (Y/N) 	No
Terminal designations	X1-X2
Mounting position	arbitrarily
Materials	
- Material of the housings	Plastic, glass-fibre reinforced thermoplastic self-extinguishing
Weight	25

Mechanical data

Connection type	Screw connection
Cable section	
- Min. Cable section	0,5, rigid 0,5, flexible

- Max. Cable section	2.5, rigid 1.5, flexible
Mounting flange position	3
mounting	pluggable
terminals	Protection against polarity reversal

Ambient conditions

Ambient temperature	
- Min. environmental temperature	-25
- Max. environmental temperature	+80
Protection class	
- Protection class-Terminals	IP20

Electrical data

Rated insulation voltage U_i	440 V
Rated operating voltage U_e	250 V

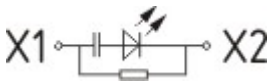
LED switching conditions display

With integrated LED (Y/N)	Yes
LED switching conditions display	
- Supply voltage U_b	230 VAC
- colour of the LED	■ yellow


Dimensions

Dimensions	
- Width	30 mm
- Length	46 mm
- Depth	60 mm


Diagram

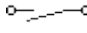


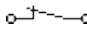
Note Diagram

 positive break NC contact

 active

 no active

 Normally-open contact

 Normally-closed contact

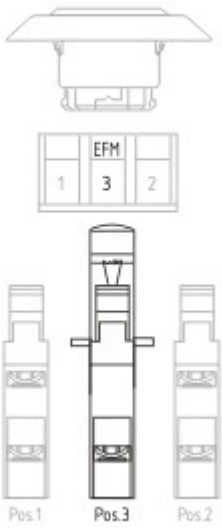
Documents

CCC certification (en) 1 MB, 20.06.2017

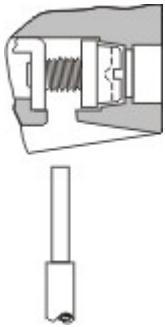
Code: q_efelp02

CCC certification (cn) 1 MB, 20.06.2017

Code: q_efelp03



Application



Operating principle
