

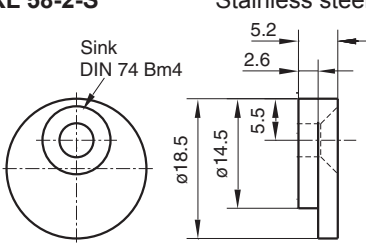
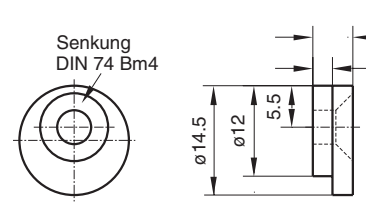
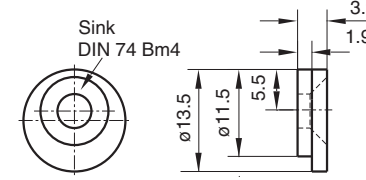
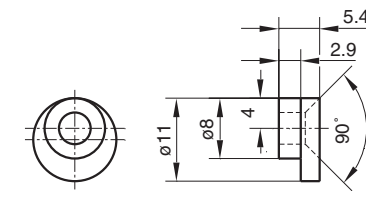
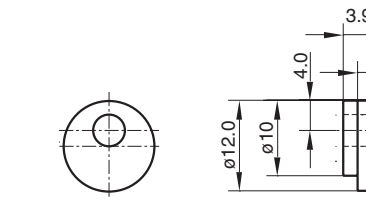
Mounting Accessories for Encoders, impulse generators and Potentiometers

Mounting clamps, couplings, reducing bush, insulating flanges, mounting brackets

Document no.: MZ 10111 ME

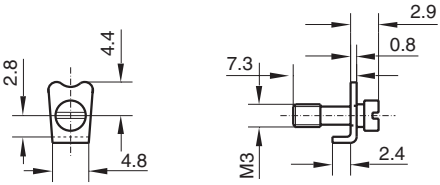
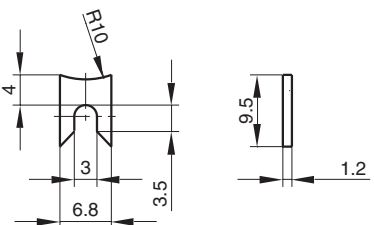
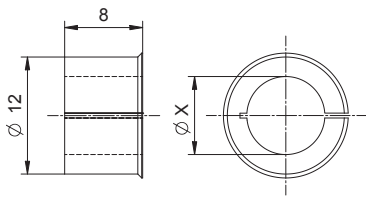
Date: 27.11.2017

Synchro-clamps (each encoder requires 3 pieces)

Order code, material, dimensions in mm	use with model	mounting circle	requested screws
KL 58-2-S Stainless steel 1.4305 	Encoders series \varnothing 58 (e.g. DAB 58, CRE 58, SRE 58, TRD58-S, ...) Incremental encoder GIM 5100	\varnothing 78 ^{+0.5}	M4x10 counter sunk screw with hexagon socket DIN 7991/ 1.4305
KL 66-2-S Stainless steel 1.4305 	Encoders series \varnothing 66 or with clamping flange (e.g. CRE 66, SRE 66, TRD58-K, SLS 66, ...) CM 50 Kxx58 / Txx58-k Rxx36 / Txx36 Txx50	\varnothing 78 ^{+0.5} \varnothing 65 ^{+0.5} \varnothing 71 ^{+0.5} \varnothing 51 ^{+0.5} \varnothing 65 ^{+0.5}	M4x10 counter sunk screw with hexagon socket DIN 7991/ 1.4305
KL 65-S Stainless steel 1.4305  TZD 14589	Encoders series \varnothing 65 with synchro flange (e.g. z.B. DAB 58, CRE 58, SRE 58, TRD58-S, ...)	\varnothing 78 ^{+0.5}	M4x10 counter sunk screw with hexagon socket DIN 7991/ 1.4305
KL 11 Ms nickel-plated 	Mounting Bracket MW 01, for model No. 58 (not for housing \varnothing 69) - see KL-58-2-S	\varnothing 64 ^{+0.5}	M4x10 counter sunk screw with hexagon socket DIN 7991/ 1.4305
KL 14 Ms nickel-plated 	Incremental encoder GIM 900	\varnothing 103 ^{+0.5}	M4x10 counter sunk screw with hexagon socket DIN 7991/ 1.4305

Mounting Accessories for Encoders, impulse generator and Potentiometers

Crabs / reducer for 12 mm clamping shaft

<i>Order code, material, dimensions in mm</i>	<i>use with model</i>	<i>mounting circle</i>	<i>requested screws</i>
RW 07 Stainless steel 1.4305 	Potentiometer PP 22S, Rotary encoder 78, HR 44, H 50, 206	∅ depending on housing diameter	-
GW-2 Stainless steel 1.4305 	Potentiometer PP 22S, Rotary encoder 78, HR 44, H 50, 206 R22	∅ depending on housing diameter ∅ 28-0.2	M2,5 counter sunk DIN 963
<i>Order code, material, dimensions in mm</i>	<i>use with model</i>	<i>Material</i>	
Reducing bush ZRH-A-12-X X = 6, 6.35, 8, 9.53, 10 	Encoders with 12 mm clamping shaft Txx58-SR	Aluminium	

Mounting Accessories for Encoders, impulse generator and Potentiometers

Couplings

Description	Data sheet
No-play bellow coupling	KK 12301
Bellow coupling Model BKM Follow-up model 393	BKM 11995
Bellow coupling Model BKK Follow-up model 493	BKK 11840

No-play Bellows Couplings models 393 and 493 (Obsolet)

A stainless steel bellow provides compensation for both misalignment or axial displacement between the two shafts. The couplings are particularly suitable for the rotationally stiff driving of high resolution angle transducers.

For the 393 coupling each of the shafts are attached with two Allen screws with cutting rings and with a six-jaw chuck for the 493 Coupling. The hubs and screws are also in stainless steel.

Technical data

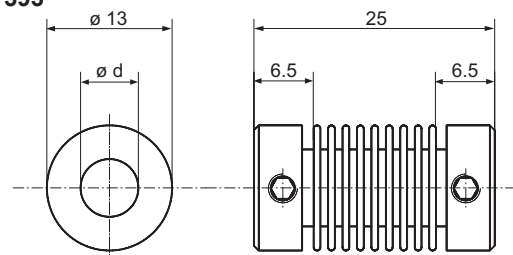
	393	493
■ Max. torque:	100 Ncm	250 Ncm
■ Max. speed:	10 000 min ⁻¹	
■ Max. parallel misalignmet:	0.5 mm	
■ Max. angular misalignmet:	7 °	
■ Max. axial displacement:	1.5 mm	
■ Operating temperature:	-40 °C +150 °C	
■ Mass:	10 g	35 g
■ Available bore diameters „ d „:	6-6.35 mm	6-6.35-8-10-12 mm

Order examples

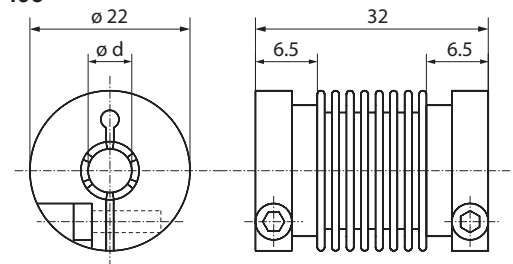
■ Both sides same:	393/6	493/8
■ Both sides different:	393/6-6,35	493/6-12

Dimensions in mm

Model 393



Model 493



The service life of the couplings (number of turns or changes of load) depends on the following factors and can therefore only be reliably determined in practical tests : Torque and moment of inertia of the driven transducer, actual parallel and/or angular offset, axial play in the driven shafts and the ambient temperature.

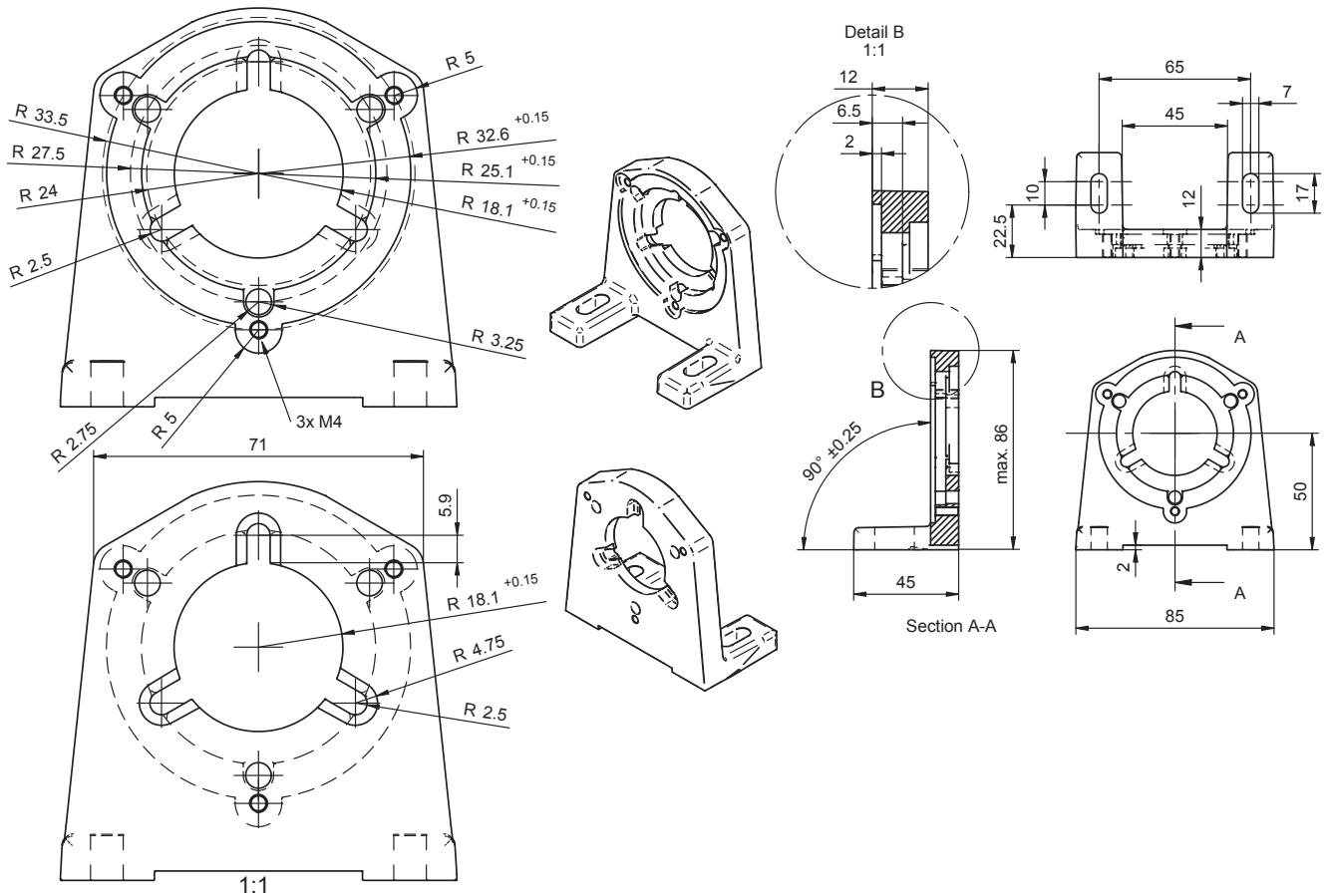
Mounting Accessories for Encoders, impulse generator and Potentiometers

Mounting Bracket

Mounting Bracket MW 01 (for model Nos. 58 and 65)

Material: Injection moulded aluminium

Dimensions in mm



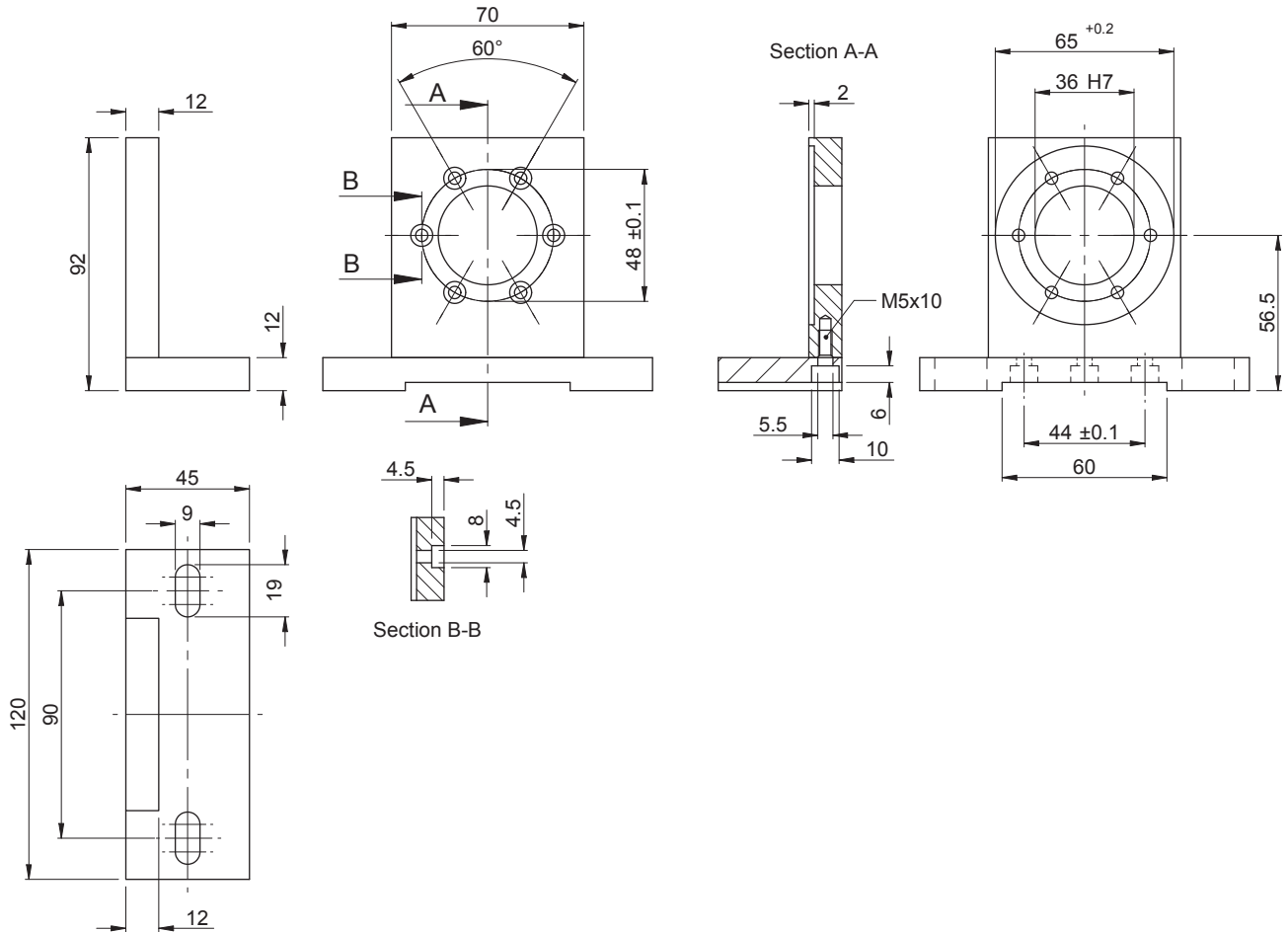
Mounting Accessories for Encoders, impulse generator and Potentiometers

Mounting Bracket

Mounting Bracket MW-STAHL-01 (for encoders of series 66), please do not use any longer.

Material: Stainless steel

Dimensions in mm



Mounting Accessories for Encoders, impulse generator and Potentiometers

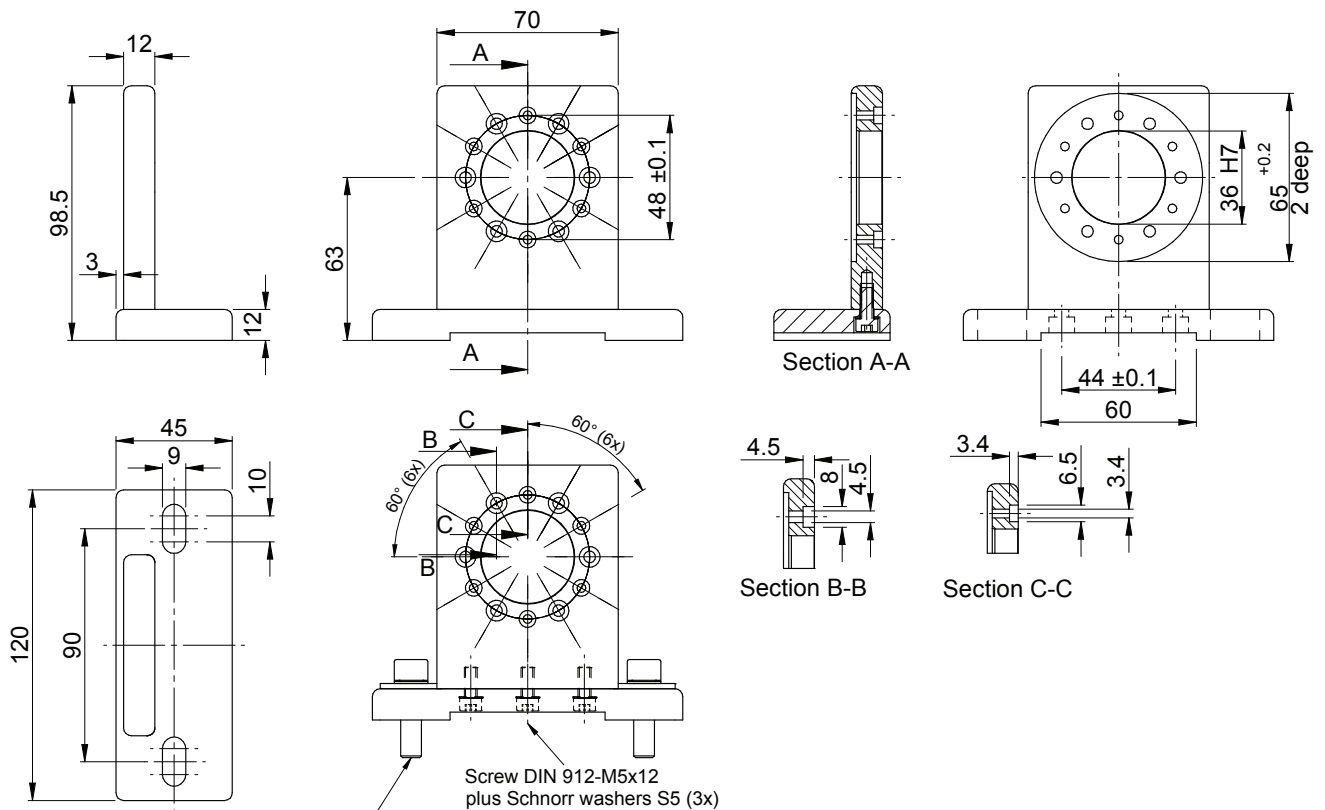
Mounting Bracket

Mounting Bracket MW-S-02 (Stainless steel 1.4404)

Mounting Bracket MW-A-02 (Aluminium)

For encoders with clamping flange

Dimensions in mm



Screw DIN 912-M8x30
and Schnorr washers S8
plus washers DIN9021-8,4 (2x)

Screw DIN 912-M5x12
plus Schnorr washers S5 (3x)

Mounting Bracket suitable for encoder
- Ø36 with clamping flange, of fixing thread M3 on pitch circle $\varnothing 48 \pm 0.1$
- Ø36 with clamping flange, of fixing M4 thread on pitch circle $\varnothing 48 \pm 0.1$

Provision:
- 2x screw DIN912-M8x30 + Schnorr washers S8 + disc DIN 9021-8.4
- 3x screw DIN912-M3x12 + Schnorr washers S3
- 3x screw DIN912-M4x12 + Schnorr washers S4

Mounting Accessories for Encoders, impulse generator and Potentiometers

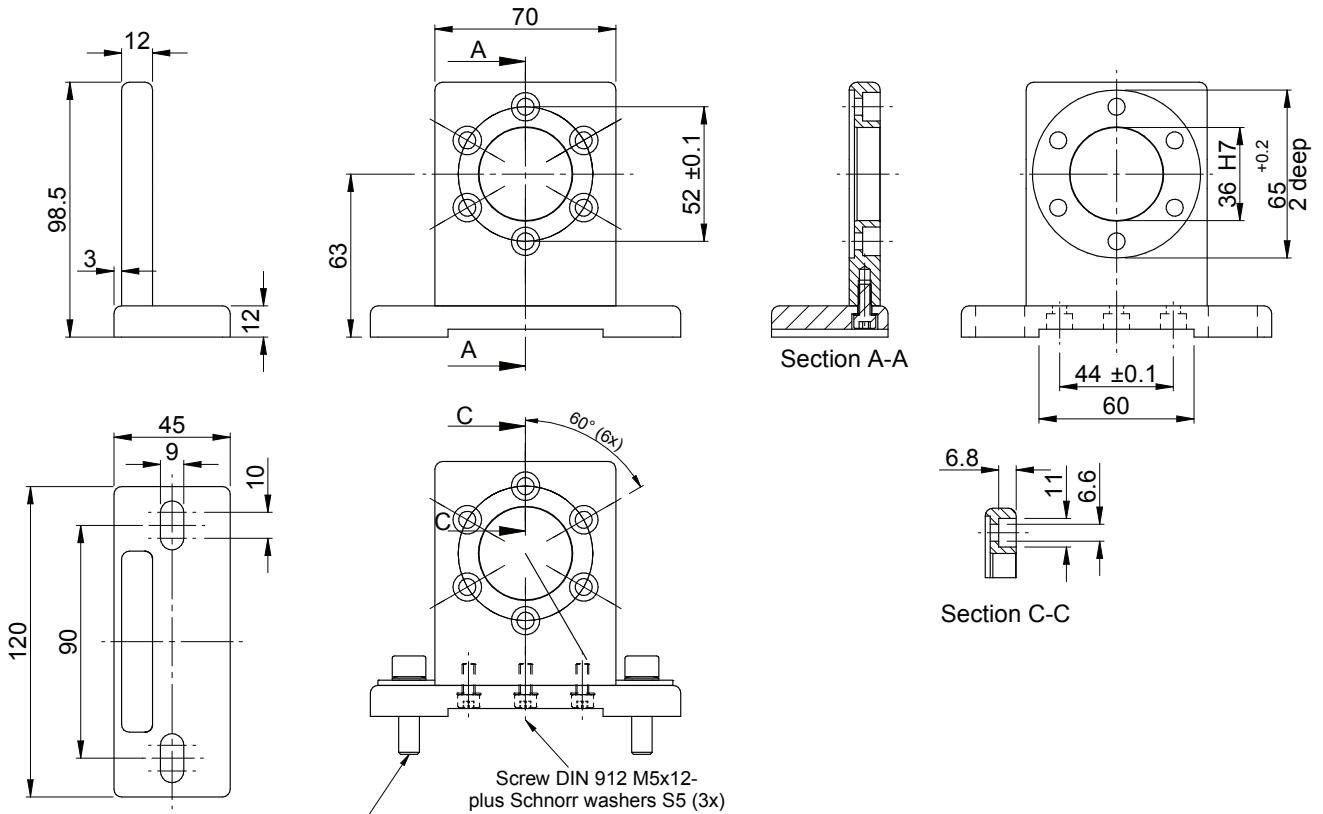
Mounting Bracket

Montagewinkel MW-S-03 (Stainless steel 1.4404)

Montagewinkel MW-A-03 (Aluminium)

For encoder and electronic cam switch encoder with cam flange

Dimensions in mm



Mounting Bracket suitable for encoder
 - $\varnothing 36$ with clamping flange, of fixing thread M6 on pitch circle $\varnothing 52 \pm 0.1$

Provision:
 - 2x screw DIN912-M8x30 + Schnorr washers S8 + disc DIN9021-8.4
 - 3x screw DIN912-M6x12 + Schnorr washers S6

**Mounting Accessories for Encoders, impulse generator
and Potentiometers**

Insulating Flange

Insulating Flange FL 01 (for model No. 65)

Material: Ertalyle

Dimensions in mm

