

Adapter for 6 mm to G1/2"

ZH6C004

Part Number



Technical Data

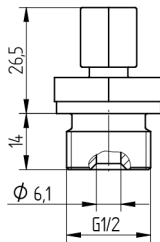
Mechanical Data

Height	35 mm
Mechanical Strength	≤ 10 bar
Temperature Range	-20...100 °C
Mounting Mode	Mounting
Material	Stainless Steel 1.4571
Connection	Locking ring
Packaging unit	1 Piece
Mounting Number	908

This locking ring connector is suitable for adapting connections from 6 mm to G1/2".

Complementary Products

Seal G1/2" ZH5G002



All dimensions in mm (1 mm = 0.03937 Inch)

