

# Floodlight

## ZVZF004

Part Number



- Diffuse illumination with incident light mode
- Especially for through-beam operating mode
- Flashlight mode synchronizable with image processing

### Technical Data

#### Optical Data

Light Source	White Light
Service Life (T = +25 °C)	100000 h
Luminance (continuous light mode)	~ 13000 cd/m <sup>2</sup>
Luminance (flashlight mode)	~ 35000 cd/m <sup>2</sup>

#### Electrical Data

Supply Voltage	22...27 V DC
Current Consumption (U <sub>b</sub> = 24 V)	< 1600 mA
Temperature Range	0...50 °C
Reverse Polarity Protection	yes
Protection Class	III

#### Mechanical Data

Luminous Field Length (L)	320 mm
Housing Material	Aluminum
Degree of Protection	IP42
Connection	M12 × 1; 4-pin

Connection Diagram No.

749

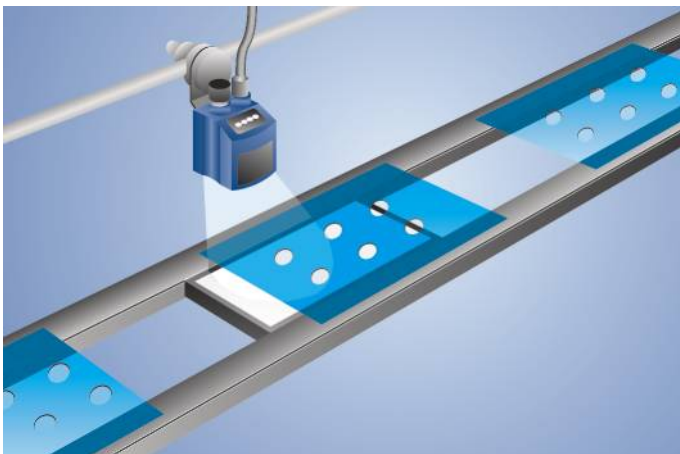
Connection Table No.

32

Suitable Connection Technology No.

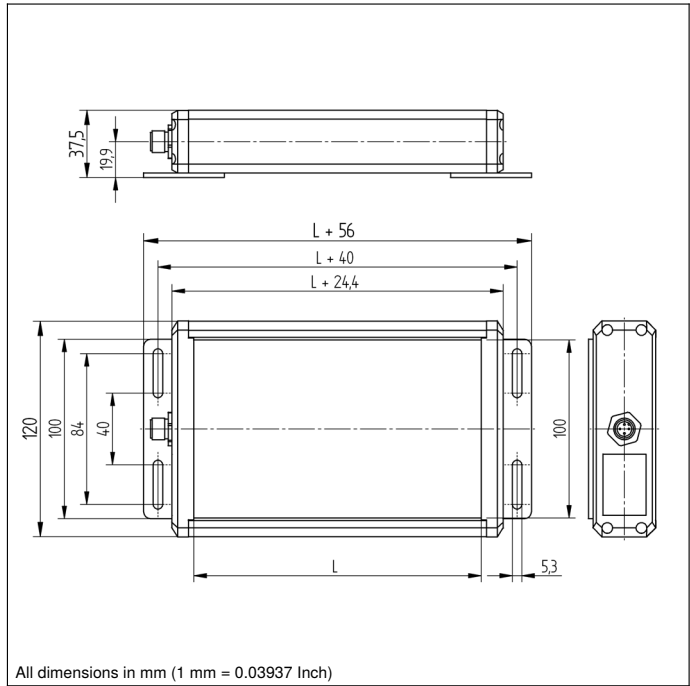
2

The wenglor floodlight can be used either with through-beam or incident light operating mode. Transparent and reflective objects as well as object contours are illuminated well.

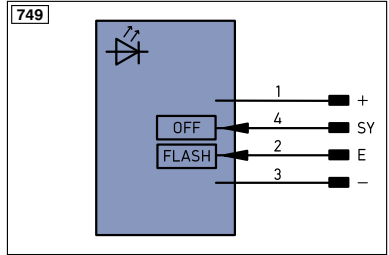


### Complementary Products

Connection Cable BG2BSW1-08M, ZAV89V901, ZDCG001



All dimensions in mm (1 mm = 0.03937 Inch)



**Legend**

+	Supply Voltage +	PT	Platinum measuring resistor
-	Supply Voltage 0 V	nc	not connected
~	Supply Voltage (AC Voltage)	U	Test Input
A	Switching Output (NO)	U	Test Input inverted
Ā	Switching Output (NC)	W	Trigger Input
V	Contamination/Error Output (NO)	O	Analog Output
Ṽ	Contamination/Error Output (NC)	O-	Ground for the Analog Output
E	Input (analog or digital)	BZ	Block Discharge
T	Teach Input	AWV	Valve Output
Z	Time Delay (activation)	a	Valve Control Output +
S	Shielding	b	Valve Control Output 0 V
RxD	Interface Receive Path	SY	Synchronization
TxD	Interface Send Path	E+	Receiver-Line
RDY	Ready	S+	Emitter-Line
GND	Ground	±	Grounding
CL	Clock	SnR	Switching Distance Reduction
E/A	Output/Input programmable	Rx+/-	Ethernet Receive Path
IO-Link		Tx+/-	Ethernet Send Path
PoE	Power over Ethernet	Bus	Interfaces-Bus A(+)/B(-)
IN	Safety Input	La	Emitted Light disengageable
OSSD	Safety Output	Mag	Magnet activation
Signal	Signal Output	RES	Input confirmation
BL-D+/-	Ethernet Gigabit bidirect. data line (A-D)	EDM	Contactor Monitoring
EN0 RS422	Encoder 0-pulse 0-0 (TTL)	ENAR5422	Encoder A/A (TTL)
		ENBR5422	Encoder B/B (TTL)

ENa	Encoder A
ENb	Encoder B
AMIN	Digital output MIN
AMAX	Digital output MAX
AOK	Digital output OK
SY In	Synchronization In
SY OUT	Synchronization OUT
OLt	Brightness output
M	Maintenance

**Wire Colors according to DIN IEC 757**

BK	Black
BN	Brown
RD	Red
OG	Orange
YE	Yellow
GN	Green
BU	Blue
VT	Violet
GY	Grey
WH	White
PK	Pink
GNYE	Green/Yellow

